



**KEY STAFF LISTING**  
**HARDIN COUNTY CDBG-DR 4332 (HARVEY) ROUND 1**

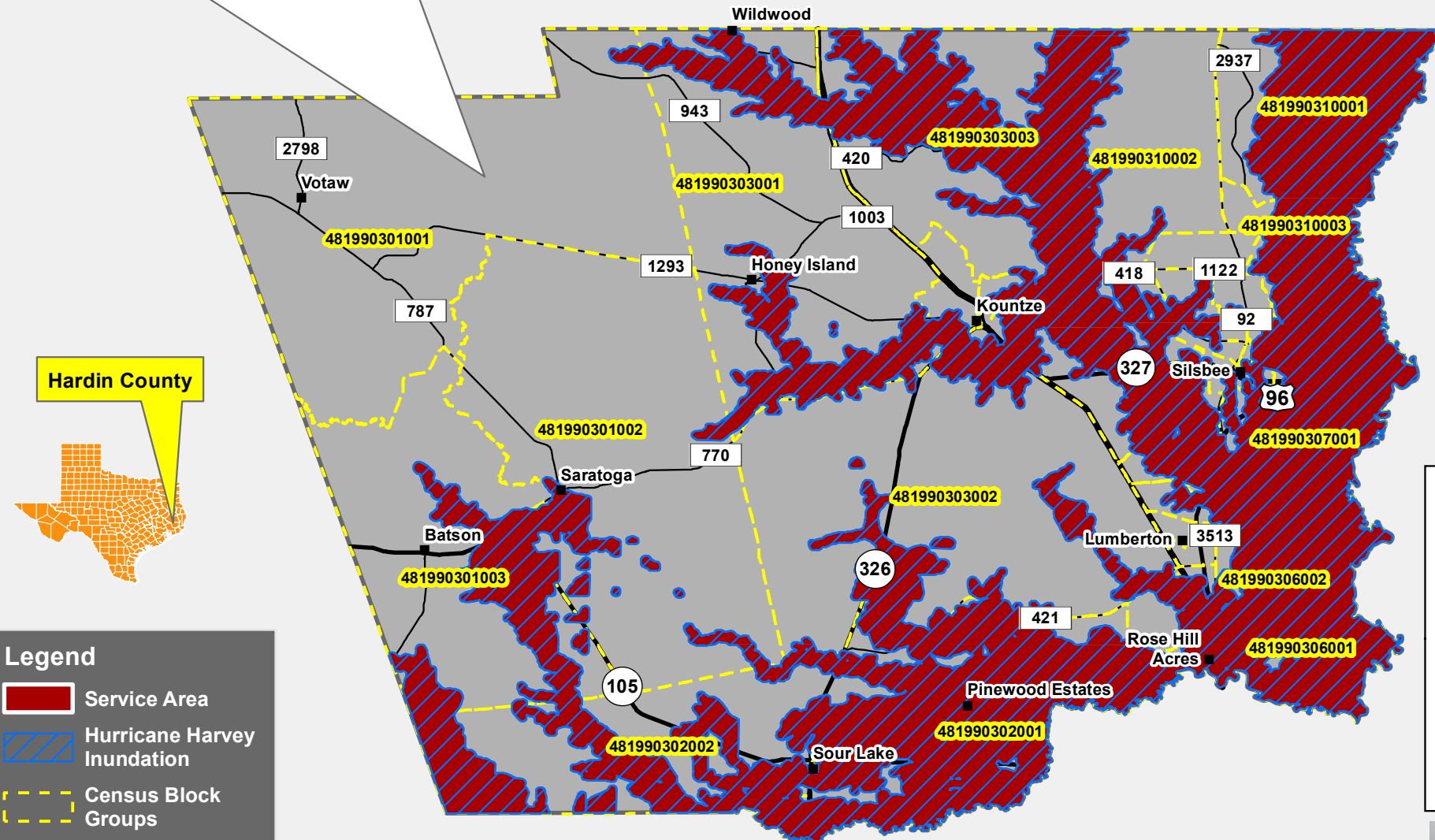
<b>Name</b>	<b>Title</b>	<b>Agency</b>	<b>Phone</b>	<b>Email</b>
Wayne McDaniel	County Judge	Hardin County	409-246-5120	wayne.mcdaniel@co.hardin.tx.us
Aaron Tupper	Emergency Management Coordinator	Hardin County	409-246-5198	aaron.tupper@co.hardin.tx.us
Amanda Young, CFM	Floodplain Administrator	Hardin County	409-246-5251	amanda.young@co.hardin.tx.us
Misty Sims	Purchasing Agent	Hardin County	409-246-5124	misty.sims@co.hardin.tx.us
Angela Gore	County Auditor	Hardin County	409-246-5130	angela.gore@co.hardin.tx.us
Michelle Brewer	Disaster Recovery Director	Hardin County	409-209-6400	michelle.brewer@co.hardin.tx.us
Greg Wobbe, CFM	Principal	MPTX	512-820-8134	greg@mptx-inc.com
Rachel Phipps	GIS / IT Director	MPTX	512-202-1160	rachel@mptx-inc.com
Josh Pulley	Project Manager	MPTX	318-332-6302	josh.pulley@mptx-inc.com
Clayton Collier, REM, PWS	Senior Environmental Scientist	Hydrex Environmental	936-554-7358	ccollier@hydrex-inc.com
Jeff Leavins, P.E.	Project Engineer	LJA Engineering	409-673-6134	jleavins@lja.com

# PROJECT BENEFICIARY SERVICE AREA MAP

## LOWER NECHES FLOOD CONTROL PROJECT



- RED AREA INDICATES PROJECT BENEFICIARY SERVICE AREA
- BLUE AREA INDICATES HURRICANE HARVEY INUNDATION
- LOWER NECHES FLOOD CONTROL PROJECT SERVICE AREA CONTAINS 28.9% RESIDENTS THAT MEET THE LOW-MODERATE INCOME (LMI) DEFINITION (LESS THAN 80% AREA MEDIAN INCOME)
- TOTAL POPULATION IN SERVICE AREA = 52880 PERSONS
- LMI POPULATION IN SERVICE AREA = 15260 PERSONS / 52880 = 28.9%



**DATA SOURCES:**

- Harvey CDBG-DR Infrastructure Application Guidebook, pg. 33
- 2015 American Community Survey (ACS), TIGER/Line Database, US Census Bureau
- HUD Notice CPD-19-02 Subject: Low- and Moderate-Income Summary Data Updates



0 2.5 5 10 Miles



DP05

## ACS DEMOGRAPHIC AND HOUSING ESTIMATES

2013-2017 American Community Survey 5-Year Estimates

Supporting documentation on code lists, subject definitions, data accuracy, and statistical testing can be found on the American Community Survey website in the Technical Documentation section.

Sample size and data quality measures (including coverage rates, allocation rates, and response rates) can be found on the American Community Survey website in the Methodology section.

Although the American Community Survey (ACS) produces population, demographic and housing unit estimates, it is the Census Bureau's Population Estimates Program that produces and disseminates the official estimates of the population for the nation, states, counties, cities, and towns and estimates of housing units for states and counties.

Subject	Census Tract 301, Hardin County, Texas				Census Tract 302, Hardin County, Texas
	Estimate	Margin of Error	Percent	Percent Margin of Error	Estimate
SEX AND AGE					
Total population	3,426	+/-658	3,426	(X)	5,756
Male	1,494	+/-329	43.6%	+/-4.5	2,712
Female	1,932	+/-396	56.4%	+/-4.5	3,044
Sex ratio (males per 100 females)	77.3	+/-14.3	(X)	(X)	89.1
Under 5 years	73	+/-67	2.1%	+/-1.9	217
5 to 9 years	226	+/-150	6.6%	+/-4.0	547
10 to 14 years	279	+/-134	8.1%	+/-3.6	413
15 to 19 years	347	+/-184	10.1%	+/-4.7	480
20 to 24 years	131	+/-89	3.8%	+/-2.5	229
25 to 34 years	496	+/-267	14.5%	+/-6.9	607
35 to 44 years	481	+/-189	14.0%	+/-5.2	636
45 to 54 years	476	+/-209	13.9%	+/-5.3	1,052
55 to 59 years	157	+/-67	4.6%	+/-2.0	398
60 to 64 years	239	+/-104	7.0%	+/-3.1	393
65 to 74 years	377	+/-174	11.0%	+/-5.2	564
75 to 84 years	138	+/-92	4.0%	+/-2.6	152
85 years and over	6	+/-11	0.2%	+/-0.3	68
Median age (years)	40.1	+/-5.6	(X)	(X)	42.0
Under 18 years	857	+/-253	25.0%	+/-3.7	1,467
16 years and over	2,735	+/-485	79.8%	+/-4.0	4,387
18 years and over	2,569	+/-443	75.0%	+/-3.7	4,289
21 years and over	2,480	+/-433	72.4%	+/-4.1	4,043
62 years and over	675	+/-222	19.7%	+/-6.3	1,020
65 years and over	521	+/-181	15.2%	+/-5.2	784
18 years and over	2,569	+/-443	2,569	(X)	4,289
Male	1,077	+/-205	41.9%	+/-4.9	1,987
Female	1,492	+/-305	58.1%	+/-4.9	2,302

Subject	Census Tract 301, Hardin County, Texas				Census Tract 302, Hardin County, Texas
	Estimate	Margin of Error	Percent	Percent Margin of Error	Estimate
Sex ratio (males per 100 females)	72.2	+/-14.8	(X)	(X)	86.3
65 years and over	521	+/-181	521	(X)	784
Male	241	+/-104	46.3%	+/-16.9	372
Female	280	+/-148	53.7%	+/-16.9	412
Sex ratio (males per 100 females)	86.1	+/-65.2	(X)	(X)	90.3
RACE					
Total population	3,426	+/-658	3,426	(X)	5,756
One race	3,408	+/-655	99.5%	+/-0.7	5,522
Two or more races	18	+/-23	0.5%	+/-0.7	234
One race	3,408	+/-655	99.5%	+/-0.7	5,522
White	3,402	+/-656	99.3%	+/-0.8	5,246
Black or African American	6	+/-11	0.2%	+/-0.3	171
American Indian and Alaska Native	0	+/-13	0.0%	+/-1.2	0
Cherokee tribal grouping	0	+/-13	0.0%	+/-1.2	0
Chippewa tribal grouping	0	+/-13	0.0%	+/-1.2	0
Navajo tribal grouping	0	+/-13	0.0%	+/-1.2	0
Sioux tribal grouping	0	+/-13	0.0%	+/-1.2	0
Asian	0	+/-13	0.0%	+/-1.2	44
Asian Indian	0	+/-13	0.0%	+/-1.2	0
Chinese	0	+/-13	0.0%	+/-1.2	0
Filipino	0	+/-13	0.0%	+/-1.2	5
Japanese	0	+/-13	0.0%	+/-1.2	0
Korean	0	+/-13	0.0%	+/-1.2	0
Vietnamese	0	+/-13	0.0%	+/-1.2	0
Other Asian	0	+/-13	0.0%	+/-1.2	39
Native Hawaiian and Other Pacific Islander	0	+/-13	0.0%	+/-1.2	0
Native Hawaiian	0	+/-13	0.0%	+/-1.2	0
Guamanian or Chamorro	0	+/-13	0.0%	+/-1.2	0
Samoan	0	+/-13	0.0%	+/-1.2	0
Other Pacific Islander	0	+/-13	0.0%	+/-1.2	0
Some other race	0	+/-13	0.0%	+/-1.2	61
Two or more races	18	+/-23	0.5%	+/-0.7	234
White and Black or African American	0	+/-13	0.0%	+/-1.2	0
White and American Indian and Alaska Native	18	+/-23	0.5%	+/-0.7	162
White and Asian	0	+/-13	0.0%	+/-1.2	0
Black or African American and American Indian and Alaska Native	0	+/-13	0.0%	+/-1.2	0
Race alone or in combination with one or more other races					
Total population	3,426	+/-658	3,426	(X)	5,756
White	3,420	+/-659	99.8%	+/-0.3	5,478
Black or African American	6	+/-11	0.2%	+/-0.3	171
American Indian and Alaska Native	18	+/-23	0.5%	+/-0.7	162
Asian	0	+/-13	0.0%	+/-1.2	57
Native Hawaiian and Other Pacific Islander	0	+/-13	0.0%	+/-1.2	0
Some other race	0	+/-13	0.0%	+/-1.2	133
HISPANIC OR LATINO AND RACE					
Total population	3,426	+/-658	3,426	(X)	5,756
Hispanic or Latino (of any race)	75	+/-109	2.2%	+/-3.1	249
Mexican	75	+/-109	2.2%	+/-3.1	132
Puerto Rican	0	+/-13	0.0%	+/-1.2	104
Cuban	0	+/-13	0.0%	+/-1.2	0
Other Hispanic or Latino	0	+/-13	0.0%	+/-1.2	13
Not Hispanic or Latino	3,351	+/-626	97.8%	+/-3.1	5,507

Subject	Census Tract 301, Hardin County, Texas				Census Tract 302, Hardin County, Texas
	Estimate	Margin of Error	Percent	Percent Margin of Error	Estimate
White alone	3,327	+/-626	97.1%	+/-3.4	5,185
Black or African American alone	6	+/-11	0.2%	+/-0.3	123
American Indian and Alaska Native alone	0	+/-13	0.0%	+/-1.2	0
Asian alone	0	+/-13	0.0%	+/-1.2	44
Native Hawaiian and Other Pacific Islander alone	0	+/-13	0.0%	+/-1.2	0
Some other race alone	0	+/-13	0.0%	+/-1.2	0
Two or more races	18	+/-23	0.5%	+/-0.7	155
Two races including Some other race	0	+/-13	0.0%	+/-1.2	0
Two races excluding Some other race, and Three or more races	18	+/-23	0.5%	+/-0.7	155
Total housing units	1,538	+/-113	(X)	(X)	2,356
CITIZEN, VOTING AGE POPULATION					
Citizen, 18 and over population	2,569	+/-443	2,569	(X)	4,260
Male	1,077	+/-205	41.9%	+/-4.9	1,968
Female	1,492	+/-305	58.1%	+/-4.9	2,292

Subject	Census Tract 302, Hardin County, Texas			Census Tract 303, Hardin County, Texas	
	Margin of Error	Percent	Percent Margin of Error	Estimate	Margin of Error
SEX AND AGE					
Total population	+/-613	5,756	(X)	11,793	+/-1,018
Male	+/-356	47.1%	+/-3.0	6,021	+/-589
Female	+/-343	52.9%	+/-3.0	5,772	+/-569
Sex ratio (males per 100 females)	+/-10.7	(X)	(X)	104.3	+/-9.8
Under 5 years	+/-125	3.8%	+/-2.1	1,279	+/-309
5 to 9 years	+/-179	9.5%	+/-2.8	647	+/-239
10 to 14 years	+/-139	7.2%	+/-2.3	709	+/-308
15 to 19 years	+/-179	8.3%	+/-2.9	909	+/-351
20 to 24 years	+/-128	4.0%	+/-2.0	797	+/-231
25 to 34 years	+/-250	10.5%	+/-3.7	1,413	+/-455
35 to 44 years	+/-130	11.0%	+/-2.4	1,670	+/-268
45 to 54 years	+/-213	18.3%	+/-2.9	1,755	+/-328
55 to 59 years	+/-106	6.9%	+/-1.9	567	+/-235
60 to 64 years	+/-130	6.8%	+/-2.4	585	+/-222
65 to 74 years	+/-126	9.8%	+/-2.3	840	+/-232
75 to 84 years	+/-56	2.6%	+/-1.0	472	+/-160
85 years and over	+/-46	1.2%	+/-0.8	150	+/-103
Median age (years)	+/-4.2	(X)	(X)	35.7	+/-3.8
Under 18 years	+/-238	25.5%	+/-2.5	3,274	+/-475
16 years and over	+/-467	76.2%	+/-2.6	9,002	+/-782
18 years and over	+/-444	74.5%	+/-2.5	8,519	+/-705
21 years and over	+/-422	70.2%	+/-2.9	7,962	+/-659
62 years and over	+/-158	17.7%	+/-3.1	1,880	+/-339
65 years and over	+/-123	13.6%	+/-2.4	1,462	+/-248
18 years and over	+/-444	4,289	(X)	8,519	+/-705
Male	+/-267	46.3%	+/-3.6	4,281	+/-417
Female	+/-274	53.7%	+/-3.6	4,238	+/-398
Sex ratio (males per 100 females)	+/-12.6	(X)	(X)	101.0	+/-9.7
65 years and over	+/-123	784	(X)	1,462	+/-248
Male	+/-76	47.4%	+/-8.6	674	+/-161
Female	+/-104	52.6%	+/-8.6	788	+/-167
Sex ratio (males per 100 females)	+/-33.0	(X)	(X)	85.5	+/-25.4
RACE					
Total population	+/-613	5,756	(X)	11,793	+/-1,018
One race	+/-601	95.9%	+/-2.6	11,695	+/-1,024
Two or more races	+/-153	4.1%	+/-2.6	98	+/-111
One race	+/-601	95.9%	+/-2.6	11,695	+/-1,024
White	+/-595	91.1%	+/-4.1	11,195	+/-1,025
Black or African American	+/-118	3.0%	+/-2.0	462	+/-436
American Indian and Alaska Native	+/-19	0.0%	+/-0.7	13	+/-31
Cherokee tribal grouping	+/-19	0.0%	+/-0.7	13	+/-31
Chippewa tribal grouping	+/-19	0.0%	+/-0.7	0	+/-21
Navajo tribal grouping	+/-19	0.0%	+/-0.7	0	+/-21
Sioux tribal grouping	+/-19	0.0%	+/-0.7	0	+/-21
Asian	+/-44	0.8%	+/-0.8	0	+/-21
Asian Indian	+/-19	0.0%	+/-0.7	0	+/-21
Chinese	+/-19	0.0%	+/-0.7	0	+/-21
Filipino	+/-11	0.1%	+/-0.2	0	+/-21
Japanese	+/-19	0.0%	+/-0.7	0	+/-21
Korean	+/-19	0.0%	+/-0.7	0	+/-21

Subject	Census Tract 302, Hardin County, Texas			Census Tract 303, Hardin County, Texas	
	Margin of Error	Percent	Percent Margin of Error	Estimate	Margin of Error
Vietnamese	+/-19	0.0%	+/-0.7	0	+/-21
Other Asian	+/-42	0.7%	+/-0.7	0	+/-21
Native Hawaiian and Other Pacific Islander	+/-19	0.0%	+/-0.7	25	+/-47
Native Hawaiian	+/-19	0.0%	+/-0.7	0	+/-21
Guamanian or Chamorro	+/-19	0.0%	+/-0.7	25	+/-47
Samoan	+/-19	0.0%	+/-0.7	0	+/-21
Other Pacific Islander	+/-19	0.0%	+/-0.7	0	+/-21
Some other race	+/-64	1.1%	+/-1.1	0	+/-21
Two or more races	+/-153	4.1%	+/-2.6	98	+/-111
White and Black or African American	+/-19	0.0%	+/-0.7	25	+/-37
White and American Indian and Alaska Native	+/-118	2.8%	+/-2.1	0	+/-21
White and Asian	+/-19	0.0%	+/-0.7	73	+/-106
Black or African American and American Indian and Alaska Native	+/-19	0.0%	+/-0.7	0	+/-21
Race alone or in combination with one or more other races					
Total population	+/-613	5,756	(X)	11,793	+/-1,018
White	+/-600	95.2%	+/-2.8	11,293	+/-1,010
Black or African American	+/-118	3.0%	+/-2.0	487	+/-456
American Indian and Alaska Native	+/-118	2.8%	+/-2.1	13	+/-31
Asian	+/-50	1.0%	+/-0.8	73	+/-106
Native Hawaiian and Other Pacific Islander	+/-19	0.0%	+/-0.7	25	+/-47
Some other race	+/-119	2.3%	+/-2.0	0	+/-21
HISPANIC OR LATINO AND RACE					
Total population	+/-613	5,756	(X)	11,793	+/-1,018
Hispanic or Latino (of any race)	+/-201	4.3%	+/-3.4	689	+/-452
Mexican	+/-118	2.3%	+/-2.0	689	+/-452
Puerto Rican	+/-124	1.8%	+/-2.2	0	+/-21
Cuban	+/-19	0.0%	+/-0.7	0	+/-21
Other Hispanic or Latino	+/-26	0.2%	+/-0.4	0	+/-21
Not Hispanic or Latino	+/-590	95.7%	+/-3.4	11,104	+/-943
White alone	+/-598	90.1%	+/-4.5	10,506	+/-946
Black or African American alone	+/-82	2.1%	+/-1.4	462	+/-436
American Indian and Alaska Native alone	+/-19	0.0%	+/-0.7	13	+/-31
Asian alone	+/-44	0.8%	+/-0.8	0	+/-21
Native Hawaiian and Other Pacific Islander alone	+/-19	0.0%	+/-0.7	25	+/-47
Some other race alone	+/-19	0.0%	+/-0.7	0	+/-21
Two or more races	+/-118	2.7%	+/-2.0	98	+/-111
Two races including Some other race	+/-19	0.0%	+/-0.7	0	+/-21
Two races excluding Some other race, and Three or more races	+/-118	2.7%	+/-2.0	98	+/-111
Total housing units	+/-152	(X)	(X)	4,864	+/-208
CITIZEN, VOTING AGE POPULATION					
Citizen, 18 and over population	+/-435	4,260	(X)	8,318	+/-758
Male	+/-260	46.2%	+/-3.6	4,096	+/-460
Female	+/-273	53.8%	+/-3.6	4,222	+/-399

Subject	Census Tract 303, Hardin County, Texas		Census Tract 304, Hardin County, Texas		
	Percent	Percent Margin of Error	Estimate	Margin of Error	Percent
SEX AND AGE					
Total population	11,793	(X)	2,291	+/-369	2,291
Male	51.1%	+/-2.3	1,170	+/-231	51.1%
Female	48.9%	+/-2.3	1,121	+/-190	48.9%
Sex ratio (males per 100 females)	(X)	(X)	104.4	+/-18.8	(X)
Under 5 years	10.8%	+/-2.3	138	+/-74	6.0%
5 to 9 years	5.5%	+/-2.0	111	+/-44	4.8%
10 to 14 years	6.0%	+/-2.5	125	+/-49	5.5%
15 to 19 years	7.7%	+/-2.9	126	+/-55	5.5%
20 to 24 years	6.8%	+/-1.9	168	+/-82	7.3%
25 to 34 years	12.0%	+/-3.5	462	+/-147	20.2%
35 to 44 years	14.2%	+/-1.8	232	+/-86	10.1%
45 to 54 years	14.9%	+/-2.8	216	+/-72	9.4%
55 to 59 years	4.8%	+/-2.1	206	+/-63	9.0%
60 to 64 years	5.0%	+/-1.8	91	+/-49	4.0%
65 to 74 years	7.1%	+/-1.9	225	+/-72	9.8%
75 to 84 years	4.0%	+/-1.4	133	+/-71	5.8%
85 years and over	1.3%	+/-0.9	58	+/-38	2.5%
Median age (years)	(X)	(X)	35.5	+/-6.6	(X)
Under 18 years	27.8%	+/-2.6	466	+/-140	20.3%
16 years and over	76.3%	+/-2.7	1,881	+/-299	82.1%
18 years and over	72.2%	+/-2.6	1,825	+/-287	79.7%
21 years and over	67.5%	+/-2.9	1,767	+/-280	77.1%
62 years and over	15.9%	+/-2.9	451	+/-93	19.7%
65 years and over	12.4%	+/-2.2	416	+/-88	18.2%
18 years and over	8,519	(X)	1,825	+/-287	1,825
Male	50.3%	+/-2.4	873	+/-180	47.8%
Female	49.7%	+/-2.4	952	+/-155	52.2%
Sex ratio (males per 100 females)	(X)	(X)	91.7	+/-18.2	(X)
65 years and over	1,462	(X)	416	+/-88	416
Male	46.1%	+/-7.4	157	+/-54	37.7%
Female	53.9%	+/-7.4	259	+/-67	62.3%
Sex ratio (males per 100 females)	(X)	(X)	60.6	+/-26.1	(X)
RACE					
Total population	11,793	(X)	2,291	+/-369	2,291
One race	99.2%	+/-0.9	2,259	+/-368	98.6%
Two or more races	0.8%	+/-0.9	32	+/-26	1.4%
One race	99.2%	+/-0.9	2,259	+/-368	98.6%
White	94.9%	+/-4.0	1,927	+/-330	84.1%
Black or African American	3.9%	+/-3.7	309	+/-153	13.5%
American Indian and Alaska Native	0.1%	+/-0.3	0	+/-13	0.0%
Cherokee tribal grouping	0.1%	+/-0.3	0	+/-13	0.0%
Chippewa tribal grouping	0.0%	+/-0.3	0	+/-13	0.0%
Navajo tribal grouping	0.0%	+/-0.3	0	+/-13	0.0%
Sioux tribal grouping	0.0%	+/-0.3	0	+/-13	0.0%
Asian	0.0%	+/-0.3	23	+/-35	1.0%
Asian Indian	0.0%	+/-0.3	0	+/-13	0.0%
Chinese	0.0%	+/-0.3	0	+/-13	0.0%
Filipino	0.0%	+/-0.3	23	+/-35	1.0%
Japanese	0.0%	+/-0.3	0	+/-13	0.0%
Korean	0.0%	+/-0.3	0	+/-13	0.0%



Subject	Census Tract 303, Hardin County, Texas		Census Tract 304, Hardin County, Texas		
	Percent	Percent Margin of Error	Estimate	Margin of Error	Percent
Vietnamese	0.0%	+/-0.3	0	+/-13	0.0%
Other Asian	0.0%	+/-0.3	0	+/-13	0.0%
Native Hawaiian and Other Pacific Islander	0.2%	+/-0.4	0	+/-13	0.0%
Native Hawaiian	0.0%	+/-0.3	0	+/-13	0.0%
Guamanian or Chamorro	0.2%	+/-0.4	0	+/-13	0.0%
Samoan	0.0%	+/-0.3	0	+/-13	0.0%
Other Pacific Islander	0.0%	+/-0.3	0	+/-13	0.0%
Some other race	0.0%	+/-0.3	0	+/-13	0.0%
Two or more races	0.8%	+/-0.9	32	+/-26	1.4%
White and Black or African American	0.2%	+/-0.3	27	+/-25	1.2%
White and American Indian and Alaska Native	0.0%	+/-0.3	5	+/-9	0.2%
White and Asian	0.6%	+/-0.9	0	+/-13	0.0%
Black or African American and American Indian and Alaska Native	0.0%	+/-0.3	0	+/-13	0.0%
Race alone or in combination with one or more other races					
Total population	11,793	(X)	2,291	+/-369	2,291
White	95.8%	+/-3.7	1,959	+/-328	85.5%
Black or African American	4.1%	+/-3.8	336	+/-160	14.7%
American Indian and Alaska Native	0.1%	+/-0.3	5	+/-9	0.2%
Asian	0.6%	+/-0.9	23	+/-35	1.0%
Native Hawaiian and Other Pacific Islander	0.2%	+/-0.4	0	+/-13	0.0%
Some other race	0.0%	+/-0.3	0	+/-13	0.0%
HISPANIC OR LATINO AND RACE					
Total population	11,793	(X)	2,291	+/-369	2,291
Hispanic or Latino (of any race)	5.8%	+/-3.7	330	+/-182	14.4%
Mexican	5.8%	+/-3.7	330	+/-182	14.4%
Puerto Rican	0.0%	+/-0.3	0	+/-13	0.0%
Cuban	0.0%	+/-0.3	0	+/-13	0.0%
Other Hispanic or Latino	0.0%	+/-0.3	0	+/-13	0.0%
Not Hispanic or Latino	94.2%	+/-3.7	1,961	+/-292	85.6%
White alone	89.1%	+/-5.2	1,597	+/-242	69.7%
Black or African American alone	3.9%	+/-3.7	309	+/-153	13.5%
American Indian and Alaska Native alone	0.1%	+/-0.3	0	+/-13	0.0%
Asian alone	0.0%	+/-0.3	23	+/-35	1.0%
Native Hawaiian and Other Pacific Islander alone	0.2%	+/-0.4	0	+/-13	0.0%
Some other race alone	0.0%	+/-0.3	0	+/-13	0.0%
Two or more races	0.8%	+/-0.9	32	+/-26	1.4%
Two races including Some other race	0.0%	+/-0.3	0	+/-13	0.0%
Two races excluding Some other race, and Three or more races	0.8%	+/-0.9	32	+/-26	1.4%
Total housing units	(X)	(X)	973	+/-93	(X)
CITIZEN, VOTING AGE POPULATION					
Citizen, 18 and over population	8,318	(X)	1,650	+/-255	1,650
Male	49.2%	+/-2.5	741	+/-150	44.9%
Female	50.8%	+/-2.5	909	+/-149	55.1%

Subject	Census Tract 304, Hardin County, Texas Percent Margin of Error	Census Tract 305.01, Hardin County, Texas			
		Estimate	Margin of Error	Percent	Percent Margin of Error
SEX AND AGE					
Total population	(X)	4,616	+/-406	4,616	(X)
Male	+/-4.5	2,450	+/-279	53.1%	+/-3.7
Female	+/-4.5	2,166	+/-254	46.9%	+/-3.7
Sex ratio (males per 100 females)	(X)	113.1	+/-17.1	(X)	(X)
Under 5 years	+/-2.7	251	+/-132	5.4%	+/-2.8
5 to 9 years	+/-1.7	450	+/-140	9.7%	+/-2.8
10 to 14 years	+/-2.0	360	+/-168	7.8%	+/-3.5
15 to 19 years	+/-2.0	225	+/-105	4.9%	+/-2.3
20 to 24 years	+/-3.1	207	+/-96	4.5%	+/-2.0
25 to 34 years	+/-5.1	551	+/-212	11.9%	+/-4.4
35 to 44 years	+/-3.2	611	+/-192	13.2%	+/-3.8
45 to 54 years	+/-2.8	654	+/-204	14.2%	+/-4.0
55 to 59 years	+/-3.1	339	+/-101	7.3%	+/-2.3
60 to 64 years	+/-2.1	393	+/-137	8.5%	+/-3.0
65 to 74 years	+/-3.1	416	+/-121	9.0%	+/-2.8
75 to 84 years	+/-3.0	111	+/-58	2.4%	+/-1.3
85 years and over	+/-1.7	48	+/-36	1.0%	+/-0.8
Median age (years)	(X)	39.0	+/-5.9	(X)	(X)
Under 18 years	+/-4.3	1,191	+/-208	25.8%	+/-3.6
16 years and over	+/-3.8	3,506	+/-330	76.0%	+/-4.1
18 years and over	+/-4.3	3,425	+/-322	74.2%	+/-3.6
21 years and over	+/-4.7	3,272	+/-305	70.9%	+/-3.4
62 years and over	+/-3.9	770	+/-149	16.7%	+/-3.5
65 years and over	+/-3.8	575	+/-134	12.5%	+/-3.1
18 years and over	(X)	3,425	+/-322	3,425	(X)
Male	+/-4.9	1,812	+/-222	52.9%	+/-3.1
Female	+/-4.9	1,613	+/-161	47.1%	+/-3.1
Sex ratio (males per 100 females)	(X)	112.3	+/-13.8	(X)	(X)
65 years and over	(X)	575	+/-134	575	(X)
Male	+/-9.7	280	+/-74	48.7%	+/-6.6
Female	+/-9.7	295	+/-80	51.3%	+/-6.6
Sex ratio (males per 100 females)	(X)	94.9	+/-24.8	(X)	(X)
RACE					
Total population	(X)	4,616	+/-406	4,616	(X)
One race	+/-1.1	4,562	+/-400	98.8%	+/-1.5
Two or more races	+/-1.1	54	+/-71	1.2%	+/-1.5
One race	+/-1.1	4,562	+/-400	98.8%	+/-1.5
White	+/-6.2	4,427	+/-395	95.9%	+/-2.6
Black or African American	+/-6.0	48	+/-56	1.0%	+/-1.2
American Indian and Alaska Native	+/-1.7	38	+/-40	0.8%	+/-0.9
Cherokee tribal grouping	+/-1.7	30	+/-38	0.6%	+/-0.8
Chippewa tribal grouping	+/-1.7	0	+/-13	0.0%	+/-0.9
Navajo tribal grouping	+/-1.7	0	+/-13	0.0%	+/-0.9
Sioux tribal grouping	+/-1.7	0	+/-13	0.0%	+/-0.9
Asian	+/-1.5	49	+/-50	1.1%	+/-1.1
Asian Indian	+/-1.7	0	+/-13	0.0%	+/-0.9
Chinese	+/-1.7	0	+/-13	0.0%	+/-0.9
Filipino	+/-1.5	18	+/-30	0.4%	+/-0.6
Japanese	+/-1.7	0	+/-13	0.0%	+/-0.9
Korean	+/-1.7	0	+/-13	0.0%	+/-0.9

Subject	Census Tract 304, Hardin County, Texas Percent Margin of Error	Census Tract 305.01, Hardin County, Texas			
		Estimate	Margin of Error	Percent	Percent Margin of Error
Vietnamese	+/-1.7	0	+/-13	0.0%	+/-0.9
Other Asian	+/-1.7	31	+/-44	0.7%	+/-1.0
Native Hawaiian and Other Pacific Islander	+/-1.7	0	+/-13	0.0%	+/-0.9
Native Hawaiian	+/-1.7	0	+/-13	0.0%	+/-0.9
Guamanian or Chamorro	+/-1.7	0	+/-13	0.0%	+/-0.9
Samoan	+/-1.7	0	+/-13	0.0%	+/-0.9
Other Pacific Islander	+/-1.7	0	+/-13	0.0%	+/-0.9
Some other race	+/-1.7	0	+/-13	0.0%	+/-0.9
Two or more races	+/-1.1	54	+/-71	1.2%	+/-1.5
White and Black or African American	+/-1.1	0	+/-13	0.0%	+/-0.9
White and American Indian and Alaska Native	+/-0.4	0	+/-13	0.0%	+/-0.9
White and Asian	+/-1.7	54	+/-71	1.2%	+/-1.5
Black or African American and American Indian and Alaska Native	+/-1.7	0	+/-13	0.0%	+/-0.9
Race alone or in combination with one or more other races					
Total population	(X)	4,616	+/-406	4,616	(X)
White	+/-5.8	4,481	+/-397	97.1%	+/-1.7
Black or African American	+/-6.3	48	+/-56	1.0%	+/-1.2
American Indian and Alaska Native	+/-0.4	38	+/-40	0.8%	+/-0.9
Asian	+/-1.5	103	+/-103	2.2%	+/-2.2
Native Hawaiian and Other Pacific Islander	+/-1.7	0	+/-13	0.0%	+/-0.9
Some other race	+/-1.7	0	+/-13	0.0%	+/-0.9
HISPANIC OR LATINO AND RACE					
Total population	(X)	4,616	+/-406	4,616	(X)
Hispanic or Latino (of any race)	+/-6.7	40	+/-48	0.9%	+/-1.1
Mexican	+/-6.7	40	+/-48	0.9%	+/-1.1
Puerto Rican	+/-1.7	0	+/-13	0.0%	+/-0.9
Cuban	+/-1.7	0	+/-13	0.0%	+/-0.9
Other Hispanic or Latino	+/-1.7	0	+/-13	0.0%	+/-0.9
Not Hispanic or Latino	+/-6.7	4,576	+/-419	99.1%	+/-1.1
White alone	+/-7.6	4,387	+/-408	95.0%	+/-2.8
Black or African American alone	+/-6.0	48	+/-56	1.0%	+/-1.2
American Indian and Alaska Native alone	+/-1.7	38	+/-40	0.8%	+/-0.9
Asian alone	+/-1.5	49	+/-50	1.1%	+/-1.1
Native Hawaiian and Other Pacific Islander alone	+/-1.7	0	+/-13	0.0%	+/-0.9
Some other race alone	+/-1.7	0	+/-13	0.0%	+/-0.9
Two or more races	+/-1.1	54	+/-71	1.2%	+/-1.5
Two races including Some other race	+/-1.7	0	+/-13	0.0%	+/-0.9
Two races excluding Some other race, and Three or more races	+/-1.1	54	+/-71	1.2%	+/-1.5
Total housing units	(X)	1,793	+/-154	(X)	(X)
CITIZEN, VOTING AGE POPULATION					
Citizen, 18 and over population	(X)	3,394	+/-321	3,394	(X)
Male	+/-4.7	1,781	+/-216	52.5%	+/-2.9
Female	+/-4.7	1,613	+/-161	47.5%	+/-2.9

Subject	Census Tract 305.02, Hardin County, Texas				Census Tract 306, Hardin County, Texas
	Estimate	Margin of Error	Percent	Percent Margin of Error	Estimate
SEX AND AGE					
Total population	8,036	+/-529	8,036	(X)	4,036
Male	3,932	+/-338	48.9%	+/-3.0	2,026
Female	4,104	+/-380	51.1%	+/-3.0	2,010
Sex ratio (males per 100 females)	95.8	+/-11.6	(X)	(X)	100.8
Under 5 years	473	+/-220	5.9%	+/-2.6	291
5 to 9 years	491	+/-161	6.1%	+/-2.0	278
10 to 14 years	564	+/-180	7.0%	+/-2.2	315
15 to 19 years	460	+/-210	5.7%	+/-2.6	284
20 to 24 years	598	+/-256	7.4%	+/-3.0	300
25 to 34 years	724	+/-251	9.0%	+/-3.0	598
35 to 44 years	1,076	+/-224	13.4%	+/-2.8	393
45 to 54 years	931	+/-253	11.6%	+/-3.0	462
55 to 59 years	576	+/-188	7.2%	+/-2.4	272
60 to 64 years	556	+/-163	6.9%	+/-2.1	142
65 to 74 years	676	+/-174	8.4%	+/-2.1	548
75 to 84 years	621	+/-167	7.7%	+/-2.2	145
85 years and over	290	+/-152	3.6%	+/-1.9	8
Median age (years)	41.9	+/-1.7	(X)	(X)	34.5
Under 18 years	1,770	+/-303	22.0%	+/-3.1	1,079
16 years and over	6,462	+/-433	80.4%	+/-3.4	3,071
18 years and over	6,266	+/-415	78.0%	+/-3.1	2,957
21 years and over	5,892	+/-385	73.3%	+/-3.5	2,817
62 years and over	1,887	+/-270	23.5%	+/-3.4	748
65 years and over	1,587	+/-251	19.7%	+/-3.1	701
18 years and over	6,266	+/-415	6,266	(X)	2,957
Male	3,052	+/-265	48.7%	+/-2.9	1,508
Female	3,214	+/-284	51.3%	+/-2.9	1,449
Sex ratio (males per 100 females)	95.0	+/-10.8	(X)	(X)	104.1
65 years and over	1,587	+/-251	1,587	(X)	701
Male	719	+/-164	45.3%	+/-6.5	342
Female	868	+/-158	54.7%	+/-6.5	359
Sex ratio (males per 100 females)	82.8	+/-21.3	(X)	(X)	95.3
RACE					
Total population	8,036	+/-529	8,036	(X)	4,036
One race	7,976	+/-529	99.3%	+/-0.8	4,010
Two or more races	60	+/-65	0.7%	+/-0.8	26
One race	7,976	+/-529	99.3%	+/-0.8	4,010
White	7,907	+/-530	98.4%	+/-1.2	4,002
Black or African American	0	+/-19	0.0%	+/-0.5	0
American Indian and Alaska Native	69	+/-44	0.9%	+/-0.5	8
Cherokee tribal grouping	24	+/-32	0.3%	+/-0.4	8
Chippewa tribal grouping	0	+/-19	0.0%	+/-0.5	0
Navajo tribal grouping	0	+/-19	0.0%	+/-0.5	0
Sioux tribal grouping	0	+/-19	0.0%	+/-0.5	0
Asian	0	+/-19	0.0%	+/-0.5	0
Asian Indian	0	+/-19	0.0%	+/-0.5	0
Chinese	0	+/-19	0.0%	+/-0.5	0
Filipino	0	+/-19	0.0%	+/-0.5	0
Japanese	0	+/-19	0.0%	+/-0.5	0
Korean	0	+/-19	0.0%	+/-0.5	0

Subject	Census Tract 305.02, Hardin County, Texas				Census Tract 306, Hardin County, Texas
	Estimate	Margin of Error	Percent	Percent Margin of Error	Estimate
Vietnamese	0	+/-19	0.0%	+/-0.5	0
Other Asian	0	+/-19	0.0%	+/-0.5	0
Native Hawaiian and Other Pacific Islander	0	+/-19	0.0%	+/-0.5	0
Native Hawaiian	0	+/-19	0.0%	+/-0.5	0
Guamanian or Chamorro	0	+/-19	0.0%	+/-0.5	0
Samoan	0	+/-19	0.0%	+/-0.5	0
Other Pacific Islander	0	+/-19	0.0%	+/-0.5	0
Some other race	0	+/-19	0.0%	+/-0.5	0
Two or more races	60	+/-65	0.7%	+/-0.8	26
White and Black or African American	0	+/-19	0.0%	+/-0.5	26
White and American Indian and Alaska Native	60	+/-65	0.7%	+/-0.8	0
White and Asian	0	+/-19	0.0%	+/-0.5	0
Black or African American and American Indian and Alaska Native	0	+/-19	0.0%	+/-0.5	0
Race alone or in combination with one or more other races					
Total population	8,036	+/-529	8,036	(X)	4,036
White	7,967	+/-527	99.1%	+/-0.5	4,028
Black or African American	0	+/-19	0.0%	+/-0.5	26
American Indian and Alaska Native	129	+/-99	1.6%	+/-1.2	8
Asian	0	+/-19	0.0%	+/-0.5	0
Native Hawaiian and Other Pacific Islander	0	+/-19	0.0%	+/-0.5	0
Some other race	0	+/-19	0.0%	+/-0.5	0
HISPANIC OR LATINO AND RACE					
Total population	8,036	+/-529	8,036	(X)	4,036
Hispanic or Latino (of any race)	334	+/-196	4.2%	+/-2.3	247
Mexican	263	+/-185	3.3%	+/-2.2	247
Puerto Rican	28	+/-44	0.3%	+/-0.5	0
Cuban	0	+/-19	0.0%	+/-0.5	0
Other Hispanic or Latino	43	+/-69	0.5%	+/-0.9	0
Not Hispanic or Latino	7,702	+/-483	95.8%	+/-2.3	3,789
White alone	7,573	+/-482	94.2%	+/-2.6	3,755
Black or African American alone	0	+/-19	0.0%	+/-0.5	0
American Indian and Alaska Native alone	69	+/-44	0.9%	+/-0.5	8
Asian alone	0	+/-19	0.0%	+/-0.5	0
Native Hawaiian and Other Pacific Islander alone	0	+/-19	0.0%	+/-0.5	0
Some other race alone	0	+/-19	0.0%	+/-0.5	0
Two or more races	60	+/-65	0.7%	+/-0.8	26
Two races including Some other race	0	+/-19	0.0%	+/-0.5	0
Two races excluding Some other race, and Three or more races	60	+/-65	0.7%	+/-0.8	26
Total housing units	3,485	+/-175	(X)	(X)	1,514
CITIZEN, VOTING AGE POPULATION					
Citizen, 18 and over population	6,240	+/-417	6,240	(X)	2,926
Male	3,052	+/-265	48.9%	+/-2.9	1,481
Female	3,188	+/-289	51.1%	+/-2.9	1,445

Subject	Census Tract 306, Hardin County, Texas			Census Tract 307, Hardin County, Texas	
	Margin of Error	Percent	Percent Margin of Error	Estimate	Margin of Error
SEX AND AGE					
Total population	+/-420	4,036	(X)	4,242	+/-415
Male	+/-290	50.2%	+/-3.6	1,855	+/-275
Female	+/-216	49.8%	+/-3.6	2,387	+/-304
Sex ratio (males per 100 females)	+/-14.5	(X)	(X)	77.7	+/-15.3
Under 5 years	+/-129	7.2%	+/-3.0	401	+/-118
5 to 9 years	+/-83	6.9%	+/-2.1	290	+/-118
10 to 14 years	+/-108	7.8%	+/-2.5	341	+/-159
15 to 19 years	+/-99	7.0%	+/-2.4	201	+/-106
20 to 24 years	+/-134	7.4%	+/-3.2	155	+/-74
25 to 34 years	+/-214	14.8%	+/-4.5	596	+/-188
35 to 44 years	+/-104	9.7%	+/-2.5	385	+/-121
45 to 54 years	+/-132	11.4%	+/-3.0	490	+/-175
55 to 59 years	+/-100	6.7%	+/-2.6	337	+/-106
60 to 64 years	+/-81	3.5%	+/-1.9	269	+/-118
65 to 74 years	+/-119	13.6%	+/-2.9	441	+/-95
75 to 84 years	+/-64	3.6%	+/-1.6	182	+/-72
85 years and over	+/-13	0.2%	+/-0.3	154	+/-75
Median age (years)	+/-3.3	(X)	(X)	41.5	+/-8.6
Under 18 years	+/-174	26.7%	+/-3.2	1,146	+/-237
16 years and over	+/-328	76.1%	+/-3.4	3,167	+/-279
18 years and over	+/-328	73.3%	+/-3.2	3,096	+/-270
21 years and over	+/-315	69.8%	+/-3.6	2,999	+/-262
62 years and over	+/-133	18.5%	+/-3.3	977	+/-184
65 years and over	+/-129	17.4%	+/-3.3	777	+/-143
18 years and over	+/-328	2,957	(X)	3,096	+/-270
Male	+/-238	51.0%	+/-3.7	1,345	+/-172
Female	+/-147	49.0%	+/-3.7	1,751	+/-176
Sex ratio (males per 100 females)	+/-15.4	(X)	(X)	76.8	+/-11.2
65 years and over	+/-129	701	(X)	777	+/-143
Male	+/-87	48.8%	+/-7.5	301	+/-84
Female	+/-79	51.2%	+/-7.5	476	+/-99
Sex ratio (males per 100 females)	+/-28.4	(X)	(X)	63.2	+/-19.3
RACE					
Total population	+/-420	4,036	(X)	4,242	+/-415
One race	+/-426	99.4%	+/-0.9	4,147	+/-420
Two or more races	+/-37	0.6%	+/-0.9	95	+/-80
One race	+/-426	99.4%	+/-0.9	4,147	+/-420
White	+/-428	99.2%	+/-1.0	3,441	+/-424
Black or African American	+/-13	0.0%	+/-1.0	692	+/-235
American Indian and Alaska Native	+/-13	0.2%	+/-0.3	0	+/-13
Cherokee tribal grouping	+/-13	0.2%	+/-0.3	0	+/-13
Chippewa tribal grouping	+/-13	0.0%	+/-1.0	0	+/-13
Navajo tribal grouping	+/-13	0.0%	+/-1.0	0	+/-13
Sioux tribal grouping	+/-13	0.0%	+/-1.0	0	+/-13
Asian	+/-13	0.0%	+/-1.0	0	+/-13
Asian Indian	+/-13	0.0%	+/-1.0	0	+/-13
Chinese	+/-13	0.0%	+/-1.0	0	+/-13
Filipino	+/-13	0.0%	+/-1.0	0	+/-13
Japanese	+/-13	0.0%	+/-1.0	0	+/-13
Korean	+/-13	0.0%	+/-1.0	0	+/-13

Subject	Census Tract 306, Hardin County, Texas			Census Tract 307, Hardin County, Texas	
	Margin of Error	Percent	Percent Margin of Error	Estimate	Margin of Error
Vietnamese	+/-13	0.0%	+/-1.0	0	+/-13
Other Asian	+/-13	0.0%	+/-1.0	0	+/-13
Native Hawaiian and Other Pacific Islander	+/-13	0.0%	+/-1.0	0	+/-13
Native Hawaiian	+/-13	0.0%	+/-1.0	0	+/-13
Guamanian or Chamorro	+/-13	0.0%	+/-1.0	0	+/-13
Samoan	+/-13	0.0%	+/-1.0	0	+/-13
Other Pacific Islander	+/-13	0.0%	+/-1.0	0	+/-13
Some other race	+/-13	0.0%	+/-1.0	14	+/-21
Two or more races	+/-37	0.6%	+/-0.9	95	+/-80
White and Black or African American	+/-37	0.6%	+/-0.9	35	+/-59
White and American Indian and Alaska Native	+/-13	0.0%	+/-1.0	36	+/-37
White and Asian	+/-13	0.0%	+/-1.0	16	+/-29
Black or African American and American Indian and Alaska Native	+/-13	0.0%	+/-1.0	0	+/-13
Race alone or in combination with one or more other races					
Total population	+/-420	4,036	(X)	4,242	+/-415
White	+/-423	99.8%	+/-0.3	3,536	+/-419
Black or African American	+/-37	0.6%	+/-0.9	735	+/-238
American Indian and Alaska Native	+/-13	0.2%	+/-0.3	44	+/-39
Asian	+/-13	0.0%	+/-1.0	16	+/-29
Native Hawaiian and Other Pacific Islander	+/-13	0.0%	+/-1.0	0	+/-13
Some other race	+/-13	0.0%	+/-1.0	14	+/-21
HISPANIC OR LATINO AND RACE					
Total population	+/-420	4,036	(X)	4,242	+/-415
Hispanic or Latino (of any race)	+/-160	6.1%	+/-3.8	623	+/-319
Mexican	+/-160	6.1%	+/-3.8	585	+/-328
Puerto Rican	+/-13	0.0%	+/-1.0	22	+/-35
Cuban	+/-13	0.0%	+/-1.0	0	+/-13
Other Hispanic or Latino	+/-13	0.0%	+/-1.0	16	+/-24
Not Hispanic or Latino	+/-407	93.9%	+/-3.8	3,619	+/-435
White alone	+/-412	93.0%	+/-3.8	2,848	+/-402
Black or African American alone	+/-13	0.0%	+/-1.0	692	+/-235
American Indian and Alaska Native alone	+/-13	0.2%	+/-0.3	0	+/-13
Asian alone	+/-13	0.0%	+/-1.0	0	+/-13
Native Hawaiian and Other Pacific Islander alone	+/-13	0.0%	+/-1.0	0	+/-13
Some other race alone	+/-13	0.0%	+/-1.0	0	+/-13
Two or more races	+/-37	0.6%	+/-0.9	79	+/-75
Two races including Some other race	+/-13	0.0%	+/-1.0	0	+/-13
Two races excluding Some other race, and Three or more races	+/-37	0.6%	+/-0.9	79	+/-75
Total housing units	+/-94	(X)	(X)	1,855	+/-142
CITIZEN, VOTING AGE POPULATION					
Citizen, 18 and over population	+/-324	2,926	(X)	3,036	+/-275
Male	+/-233	50.6%	+/-3.7	1,337	+/-171
Female	+/-147	49.4%	+/-3.7	1,699	+/-186

Subject	Census Tract 307, Hardin County, Texas		Census Tract 308, Hardin County, Texas		
	Percent	Percent Margin of Error	Estimate	Margin of Error	Percent
SEX AND AGE					
Total population	4,242	(X)	3,935	+/-414	3,935
Male	43.7%	+/-4.8	1,876	+/-222	47.7%
Female	56.3%	+/-4.8	2,059	+/-264	52.3%
Sex ratio (males per 100 females)	(X)	(X)	91.1	+/-12.0	(X)
Under 5 years	9.5%	+/-2.6	172	+/-95	4.4%
5 to 9 years	6.8%	+/-2.6	331	+/-167	8.4%
10 to 14 years	8.0%	+/-3.4	202	+/-89	5.1%
15 to 19 years	4.7%	+/-2.4	319	+/-143	8.1%
20 to 24 years	3.7%	+/-1.7	131	+/-83	3.3%
25 to 34 years	14.0%	+/-4.3	533	+/-182	13.5%
35 to 44 years	9.1%	+/-2.6	468	+/-146	11.9%
45 to 54 years	11.6%	+/-4.0	309	+/-126	7.9%
55 to 59 years	7.9%	+/-2.5	257	+/-100	6.5%
60 to 64 years	6.3%	+/-2.8	397	+/-106	10.1%
65 to 74 years	10.4%	+/-2.3	510	+/-114	13.0%
75 to 84 years	4.3%	+/-1.6	202	+/-90	5.1%
85 years and over	3.6%	+/-1.8	104	+/-50	2.6%
Median age (years)	(X)	(X)	38.6	+/-6.3	(X)
Under 18 years	27.0%	+/-3.9	888	+/-210	22.6%
16 years and over	74.7%	+/-3.8	3,102	+/-287	78.8%
18 years and over	73.0%	+/-3.9	3,047	+/-282	77.4%
21 years and over	70.7%	+/-3.8	2,911	+/-247	74.0%
62 years and over	23.0%	+/-4.3	1,020	+/-166	25.9%
65 years and over	18.3%	+/-3.3	816	+/-147	20.7%
18 years and over	3,096	(X)	3,047	+/-282	3,047
Male	43.4%	+/-3.6	1,382	+/-187	45.4%
Female	56.6%	+/-3.6	1,665	+/-201	54.6%
Sex ratio (males per 100 females)	(X)	(X)	83.0	+/-15.0	(X)
65 years and over	777	(X)	816	+/-147	816
Male	38.7%	+/-7.2	322	+/-94	39.5%
Female	61.3%	+/-7.2	494	+/-103	60.5%
Sex ratio (males per 100 females)	(X)	(X)	65.2	+/-22.8	(X)
RACE					
Total population	4,242	(X)	3,935	+/-414	3,935
One race	97.8%	+/-1.9	3,928	+/-413	99.8%
Two or more races	2.2%	+/-1.9	7	+/-13	0.2%
One race	97.8%	+/-1.9	3,928	+/-413	99.8%
White	81.1%	+/-5.6	2,424	+/-341	61.6%
Black or African American	16.3%	+/-5.4	1,491	+/-306	37.9%
American Indian and Alaska Native	0.0%	+/-0.9	0	+/-13	0.0%
Cherokee tribal grouping	0.0%	+/-0.9	0	+/-13	0.0%
Chippewa tribal grouping	0.0%	+/-0.9	0	+/-13	0.0%
Navajo tribal grouping	0.0%	+/-0.9	0	+/-13	0.0%
Sioux tribal grouping	0.0%	+/-0.9	0	+/-13	0.0%
Asian	0.0%	+/-0.9	13	+/-19	0.3%
Asian Indian	0.0%	+/-0.9	0	+/-13	0.0%
Chinese	0.0%	+/-0.9	0	+/-13	0.0%
Filipino	0.0%	+/-0.9	0	+/-13	0.0%
Japanese	0.0%	+/-0.9	0	+/-13	0.0%
Korean	0.0%	+/-0.9	0	+/-13	0.0%



Subject	Census Tract 307, Hardin County, Texas		Census Tract 308, Hardin County, Texas		
	Percent	Percent Margin of Error	Estimate	Margin of Error	Percent
Vietnamese	0.0%	+/-0.9	13	+/-19	0.3%
Other Asian	0.0%	+/-0.9	0	+/-13	0.0%
Native Hawaiian and Other Pacific Islander	0.0%	+/-0.9	0	+/-13	0.0%
Native Hawaiian	0.0%	+/-0.9	0	+/-13	0.0%
Guamanian or Chamorro	0.0%	+/-0.9	0	+/-13	0.0%
Samoan	0.0%	+/-0.9	0	+/-13	0.0%
Other Pacific Islander	0.0%	+/-0.9	0	+/-13	0.0%
Some other race	0.3%	+/-0.5	0	+/-13	0.0%
Two or more races	2.2%	+/-1.9	7	+/-13	0.2%
White and Black or African American	0.8%	+/-1.4	0	+/-13	0.0%
White and American Indian and Alaska Native	0.8%	+/-0.9	7	+/-13	0.2%
White and Asian	0.4%	+/-0.7	0	+/-13	0.0%
Black or African American and American Indian and Alaska Native	0.0%	+/-0.9	0	+/-13	0.0%
Race alone or in combination with one or more other races					
Total population	4,242	(X)	3,935	+/-414	3,935
White	83.4%	+/-5.4	2,431	+/-342	61.8%
Black or African American	17.3%	+/-5.4	1,491	+/-306	37.9%
American Indian and Alaska Native	1.0%	+/-0.9	7	+/-13	0.2%
Asian	0.4%	+/-0.7	13	+/-19	0.3%
Native Hawaiian and Other Pacific Islander	0.0%	+/-0.9	0	+/-13	0.0%
Some other race	0.3%	+/-0.5	0	+/-13	0.0%
HISPANIC OR LATINO AND RACE					
Total population	4,242	(X)	3,935	+/-414	3,935
Hispanic or Latino (of any race)	14.7%	+/-7.2	197	+/-127	5.0%
Mexican	13.8%	+/-7.4	178	+/-118	4.5%
Puerto Rican	0.5%	+/-0.8	0	+/-13	0.0%
Cuban	0.0%	+/-0.9	0	+/-13	0.0%
Other Hispanic or Latino	0.4%	+/-0.6	19	+/-30	0.5%
Not Hispanic or Latino	85.3%	+/-7.2	3,738	+/-399	95.0%
White alone	67.1%	+/-7.6	2,227	+/-335	56.6%
Black or African American alone	16.3%	+/-5.4	1,491	+/-306	37.9%
American Indian and Alaska Native alone	0.0%	+/-0.9	0	+/-13	0.0%
Asian alone	0.0%	+/-0.9	13	+/-19	0.3%
Native Hawaiian and Other Pacific Islander alone	0.0%	+/-0.9	0	+/-13	0.0%
Some other race alone	0.0%	+/-0.9	0	+/-13	0.0%
Two or more races	1.9%	+/-1.8	7	+/-13	0.2%
Two races including Some other race	0.0%	+/-0.9	0	+/-13	0.0%
Two races excluding Some other race, and Three or more races	1.9%	+/-1.8	7	+/-13	0.2%
Total housing units	(X)	(X)	2,138	+/-141	(X)
CITIZEN, VOTING AGE POPULATION					
Citizen, 18 and over population	3,036	(X)	3,047	+/-282	3,047
Male	44.0%	+/-3.7	1,382	+/-187	45.4%
Female	56.0%	+/-3.7	1,665	+/-201	54.6%

Subject	Census Tract 308, Hardin County, Texas Percent Margin of Error	Census Tract 309, Hardin County, Texas			
		Estimate	Margin of Error	Percent	Percent Margin of Error
SEX AND AGE					
Total population	(X)	4,068	+/-378	4,068	(X)
Male	+/-3.2	1,975	+/-241	48.5%	+/-4.6
Female	+/-3.2	2,093	+/-293	51.5%	+/-4.6
Sex ratio (males per 100 females)	(X)	94.4	+/-17.7	(X)	(X)
Under 5 years	+/-2.3	248	+/-166	6.1%	+/-3.9
5 to 9 years	+/-3.9	305	+/-143	7.5%	+/-3.3
10 to 14 years	+/-2.2	236	+/-93	5.8%	+/-2.1
15 to 19 years	+/-3.2	198	+/-86	4.9%	+/-2.1
20 to 24 years	+/-2.1	320	+/-125	7.9%	+/-3.1
25 to 34 years	+/-4.1	399	+/-191	9.8%	+/-4.4
35 to 44 years	+/-3.7	603	+/-152	14.8%	+/-3.5
45 to 54 years	+/-3.3	481	+/-133	11.8%	+/-3.3
55 to 59 years	+/-2.5	373	+/-116	9.2%	+/-2.8
60 to 64 years	+/-2.7	268	+/-107	6.6%	+/-2.8
65 to 74 years	+/-3.2	407	+/-112	10.0%	+/-2.7
75 to 84 years	+/-2.4	165	+/-90	4.1%	+/-2.2
85 years and over	+/-1.3	65	+/-62	1.6%	+/-1.5
Median age (years)	(X)	40.4	+/-4.6	(X)	(X)
Under 18 years	+/-3.8	936	+/-241	23.0%	+/-4.7
16 years and over	+/-4.3	3,242	+/-286	79.7%	+/-4.7
18 years and over	+/-3.8	3,132	+/-277	77.0%	+/-4.7
21 years and over	+/-5.1	3,043	+/-266	74.8%	+/-4.6
62 years and over	+/-5.0	790	+/-150	19.4%	+/-3.7
65 years and over	+/-4.4	637	+/-138	15.7%	+/-3.2
18 years and over	(X)	3,132	+/-277	3,132	(X)
Male	+/-4.4	1,560	+/-206	49.8%	+/-4.0
Female	+/-4.4	1,572	+/-169	50.2%	+/-4.0
Sex ratio (males per 100 females)	(X)	99.2	+/-16.2	(X)	(X)
65 years and over	(X)	637	+/-138	637	(X)
Male	+/-8.2	275	+/-76	43.2%	+/-7.7
Female	+/-8.2	362	+/-93	56.8%	+/-7.7
Sex ratio (males per 100 females)	(X)	76.0	+/-24.2	(X)	(X)
RACE					
Total population	(X)	4,068	+/-378	4,068	(X)
One race	+/-0.3	3,945	+/-378	97.0%	+/-2.3
Two or more races	+/-0.3	123	+/-94	3.0%	+/-2.3
One race	+/-0.3	3,945	+/-378	97.0%	+/-2.3
White	+/-6.4	3,805	+/-369	93.5%	+/-3.4
Black or African American	+/-6.5	0	+/-13	0.0%	+/-1.0
American Indian and Alaska Native	+/-1.0	11	+/-20	0.3%	+/-0.5
Cherokee tribal grouping	+/-1.0	0	+/-13	0.0%	+/-1.0
Chippewa tribal grouping	+/-1.0	0	+/-13	0.0%	+/-1.0
Navajo tribal grouping	+/-1.0	0	+/-13	0.0%	+/-1.0
Sioux tribal grouping	+/-1.0	0	+/-13	0.0%	+/-1.0
Asian	+/-0.5	79	+/-70	1.9%	+/-1.7
Asian Indian	+/-1.0	16	+/-24	0.4%	+/-0.6
Chinese	+/-1.0	0	+/-13	0.0%	+/-1.0
Filipino	+/-1.0	0	+/-13	0.0%	+/-1.0
Japanese	+/-1.0	0	+/-13	0.0%	+/-1.0
Korean	+/-1.0	48	+/-68	1.2%	+/-1.6

Subject	Census Tract 308, Hardin County, Texas Percent Margin of Error	Census Tract 309, Hardin County, Texas			
		Estimate	Margin of Error	Percent	Percent Margin of Error
Vietnamese	+/-0.5	0	+/-13	0.0%	+/-1.0
Other Asian	+/-1.0	15	+/-23	0.4%	+/-0.6
Native Hawaiian and Other Pacific Islander	+/-1.0	0	+/-13	0.0%	+/-1.0
Native Hawaiian	+/-1.0	0	+/-13	0.0%	+/-1.0
Guamanian or Chamorro	+/-1.0	0	+/-13	0.0%	+/-1.0
Samoan	+/-1.0	0	+/-13	0.0%	+/-1.0
Other Pacific Islander	+/-1.0	0	+/-13	0.0%	+/-1.0
Some other race	+/-1.0	50	+/-80	1.2%	+/-2.0
Two or more races	+/-0.3	123	+/-94	3.0%	+/-2.3
White and Black or African American	+/-1.0	0	+/-13	0.0%	+/-1.0
White and American Indian and Alaska Native	+/-0.3	45	+/-44	1.1%	+/-1.1
White and Asian	+/-1.0	78	+/-88	1.9%	+/-2.1
Black or African American and American Indian and Alaska Native	+/-1.0	0	+/-13	0.0%	+/-1.0
Race alone or in combination with one or more other races					
Total population	(X)	4,068	+/-378	4,068	(X)
White	+/-6.5	3,928	+/-369	96.6%	+/-2.6
Black or African American	+/-6.5	0	+/-13	0.0%	+/-1.0
American Indian and Alaska Native	+/-0.3	56	+/-47	1.4%	+/-1.2
Asian	+/-0.5	157	+/-106	3.9%	+/-2.6
Native Hawaiian and Other Pacific Islander	+/-1.0	0	+/-13	0.0%	+/-1.0
Some other race	+/-1.0	50	+/-80	1.2%	+/-2.0
HISPANIC OR LATINO AND RACE					
Total population	(X)	4,068	+/-378	4,068	(X)
Hispanic or Latino (of any race)	+/-3.1	32	+/-54	0.8%	+/-1.3
Mexican	+/-2.9	0	+/-13	0.0%	+/-1.0
Puerto Rican	+/-1.0	0	+/-13	0.0%	+/-1.0
Cuban	+/-1.0	0	+/-13	0.0%	+/-1.0
Other Hispanic or Latino	+/-0.8	32	+/-54	0.8%	+/-1.3
Not Hispanic or Latino	+/-3.1	4,036	+/-375	99.2%	+/-1.3
White alone	+/-7.0	3,805	+/-369	93.5%	+/-3.4
Black or African American alone	+/-6.5	0	+/-13	0.0%	+/-1.0
American Indian and Alaska Native alone	+/-1.0	11	+/-20	0.3%	+/-0.5
Asian alone	+/-0.5	79	+/-70	1.9%	+/-1.7
Native Hawaiian and Other Pacific Islander alone	+/-1.0	0	+/-13	0.0%	+/-1.0
Some other race alone	+/-1.0	50	+/-80	1.2%	+/-2.0
Two or more races	+/-0.3	91	+/-85	2.2%	+/-2.1
Two races including Some other race	+/-1.0	0	+/-13	0.0%	+/-1.0
Two races excluding Some other race, and Three or more races	+/-0.3	91	+/-85	2.2%	+/-2.1
Total housing units	(X)	1,760	+/-104	(X)	(X)
CITIZEN, VOTING AGE POPULATION					
Citizen, 18 and over population	(X)	3,044	+/-282	3,044	(X)
Male	+/-4.4	1,526	+/-206	50.1%	+/-4.1
Female	+/-4.4	1,518	+/-173	49.9%	+/-4.1

Subject	Census Tract 310, Hardin County, Texas			
	Estimate	Margin of Error	Percent	Percent Margin of Error
SEX AND AGE				
Total population	3,794	+/-478	3,794	(X)
Male	1,854	+/-280	48.9%	+/-3.9
Female	1,940	+/-283	51.1%	+/-3.9
Sex ratio (males per 100 females)	95.6	+/-14.8	(X)	(X)
Under 5 years	87	+/-59	2.3%	+/-1.6
5 to 9 years	162	+/-90	4.3%	+/-2.2
10 to 14 years	336	+/-145	8.9%	+/-3.2
15 to 19 years	296	+/-121	7.8%	+/-3.0
20 to 24 years	174	+/-101	4.6%	+/-2.5
25 to 34 years	603	+/-227	15.9%	+/-5.4
35 to 44 years	514	+/-154	13.5%	+/-3.3
45 to 54 years	499	+/-162	13.2%	+/-4.1
55 to 59 years	381	+/-120	10.0%	+/-3.3
60 to 64 years	193	+/-87	5.1%	+/-2.2
65 to 74 years	380	+/-136	10.0%	+/-3.9
75 to 84 years	162	+/-79	4.3%	+/-2.1
85 years and over	7	+/-12	0.2%	+/-0.3
Median age (years)	40.7	+/-4.0	(X)	(X)
Under 18 years	792	+/-219	20.9%	+/-4.2
16 years and over	3,151	+/-357	83.1%	+/-4.3
18 years and over	3,002	+/-344	79.1%	+/-4.2
21 years and over	2,868	+/-337	75.6%	+/-4.7
62 years and over	691	+/-163	18.2%	+/-4.8
65 years and over	549	+/-156	14.5%	+/-4.6
18 years and over	3,002	+/-344	3,002	(X)
Male	1,549	+/-246	51.6%	+/-4.1
Female	1,453	+/-175	48.4%	+/-4.1
Sex ratio (males per 100 females)	106.6	+/-17.6	(X)	(X)
65 years and over	549	+/-156	549	(X)
Male	279	+/-97	50.8%	+/-9.6
Female	270	+/-92	49.2%	+/-9.6
Sex ratio (males per 100 females)	103.3	+/-39.3	(X)	(X)
RACE				
Total population	3,794	+/-478	3,794	(X)
One race	3,750	+/-481	98.8%	+/-1.8
Two or more races	44	+/-70	1.2%	+/-1.8
One race	3,750	+/-481	98.8%	+/-1.8
White	3,674	+/-481	96.8%	+/-2.7
Black or African American	20	+/-31	0.5%	+/-0.8
American Indian and Alaska Native	0	+/-13	0.0%	+/-1.0
Cherokee tribal grouping	0	+/-13	0.0%	+/-1.0
Chippewa tribal grouping	0	+/-13	0.0%	+/-1.0
Navajo tribal grouping	0	+/-13	0.0%	+/-1.0
Sioux tribal grouping	0	+/-13	0.0%	+/-1.0
Asian	56	+/-83	1.5%	+/-2.2
Asian Indian	56	+/-83	1.5%	+/-2.2
Chinese	0	+/-13	0.0%	+/-1.0
Filipino	0	+/-13	0.0%	+/-1.0
Japanese	0	+/-13	0.0%	+/-1.0
Korean	0	+/-13	0.0%	+/-1.0
Vietnamese	0	+/-13	0.0%	+/-1.0

Subject	Census Tract 310, Hardin County, Texas			
	Estimate	Margin of Error	Percent	Percent Margin of Error
Other Asian	0	+/-13	0.0%	+/-1.0
Native Hawaiian and Other Pacific Islander	0	+/-13	0.0%	+/-1.0
Native Hawaiian	0	+/-13	0.0%	+/-1.0
Guamanian or Chamorro	0	+/-13	0.0%	+/-1.0
Samoa	0	+/-13	0.0%	+/-1.0
Other Pacific Islander	0	+/-13	0.0%	+/-1.0
Some other race	0	+/-13	0.0%	+/-1.0
Two or more races	44	+/-70	1.2%	+/-1.8
White and Black or African American	0	+/-13	0.0%	+/-1.0
White and American Indian and Alaska Native	0	+/-13	0.0%	+/-1.0
White and Asian	18	+/-28	0.5%	+/-0.7
Black or African American and American Indian and Alaska Native	0	+/-13	0.0%	+/-1.0
Race alone or in combination with one or more other races				
Total population	3,794	+/-478	3,794	(X)
White	3,718	+/-480	98.0%	+/-2.4
Black or African American	20	+/-31	0.5%	+/-0.8
American Indian and Alaska Native	0	+/-13	0.0%	+/-1.0
Asian	100	+/-98	2.6%	+/-2.6
Native Hawaiian and Other Pacific Islander	0	+/-13	0.0%	+/-1.0
Some other race	26	+/-43	0.7%	+/-1.2
HISPANIC OR LATINO AND RACE				
Total population	3,794	+/-478	3,794	(X)
Hispanic or Latino (of any race)	187	+/-119	4.9%	+/-3.1
Mexican	162	+/-118	4.3%	+/-3.0
Puerto Rican	0	+/-13	0.0%	+/-1.0
Cuban	0	+/-13	0.0%	+/-1.0
Other Hispanic or Latino	25	+/-38	0.7%	+/-1.0
Not Hispanic or Latino	3,607	+/-479	95.1%	+/-3.1
White alone	3,513	+/-479	92.6%	+/-3.9
Black or African American alone	20	+/-31	0.5%	+/-0.8
American Indian and Alaska Native alone	0	+/-13	0.0%	+/-1.0
Asian alone	56	+/-83	1.5%	+/-2.2
Native Hawaiian and Other Pacific Islander alone	0	+/-13	0.0%	+/-1.0
Some other race alone	0	+/-13	0.0%	+/-1.0
Two or more races	18	+/-28	0.5%	+/-0.7
Two races including Some other race	0	+/-13	0.0%	+/-1.0
Two races excluding Some other race, and Three or more races	18	+/-28	0.5%	+/-0.7
Total housing units	1,744	+/-102	(X)	(X)
CITIZEN, VOTING AGE POPULATION				
Citizen, 18 and over population	3,002	+/-344	3,002	(X)
Male	1,549	+/-246	51.6%	+/-4.1
Female	1,453	+/-175	48.4%	+/-4.1

Data are based on a sample and are subject to sampling variability. The degree of uncertainty for an estimate arising from sampling variability is represented through the use of a margin of error. The value shown here is the 90 percent margin of error. The margin of error can be interpreted roughly as providing a 90 percent probability that the interval defined by the estimate minus the margin of error and the estimate plus the margin of error (the lower and upper confidence bounds) contains the true value. In addition to sampling variability, the ACS estimates are subject to nonsampling error (for a discussion of nonsampling variability, see Accuracy of the Data). The effect of nonsampling error is not represented in these tables.

For more information on understanding race and Hispanic origin data, please see the Census 2010 Brief entitled, Overview of Race and Hispanic Origin: 2010, issued March 2011. (pdf format)

While the 2013-2017 American Community Survey (ACS) data generally reflect the February 2013 Office of Management and Budget (OMB) definitions of metropolitan and micropolitan statistical areas; in certain instances the names, codes, and boundaries of the principal cities shown in ACS tables may differ from the OMB definitions due to differences in the effective dates of the geographic entities.

Estimates of urban and rural populations, housing units, and characteristics reflect boundaries of urban areas defined based on Census 2010 data. As a result, data for urban and rural areas from the ACS do not necessarily reflect the results of ongoing urbanization.

Source: U.S. Census Bureau, 2013-2017 American Community Survey 5-Year Estimates

#### Explanation of Symbols:

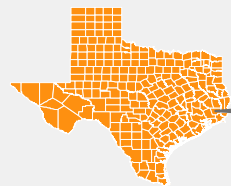
1. An '\*\*\*' entry in the margin of error column indicates that either no sample observations or too few sample observations were available to compute a standard error and thus the margin of error. A statistical test is not appropriate.
2. An '-' entry in the estimate column indicates that either no sample observations or too few sample observations were available to compute an estimate, or a ratio of medians cannot be calculated because one or both of the median estimates falls in the lowest interval or upper interval of an open-ended distribution.
3. An '-' following a median estimate means the median falls in the lowest interval of an open-ended distribution.
4. An '+' following a median estimate means the median falls in the upper interval of an open-ended distribution.
5. An '\*\*\*\*' entry in the margin of error column indicates that the median falls in the lowest interval or upper interval of an open-ended distribution. A statistical test is not appropriate.
6. An '\*\*\*\*\*' entry in the margin of error column indicates that the estimate is controlled. A statistical test for sampling variability is not appropriate.
7. An 'N' entry in the estimate and margin of error columns indicates that data for this geographic area cannot be displayed because the number of sample cases is too small.
8. An '(X)' means that the estimate is not applicable or not available.

# PROJECT BENEFICIARY SERVICE AREA MAP

## SARATOGA ESD LMI FIRE PROTECTION EQUIPMENT



- RED AREA INDICATES PROJECT BENEFICIARY SERVICE AREA
- BLUE AREA INDICATES HURRICANE HARVEY INUNDATION
- SARATOGA ESD FIRE PROTECTION EQUIPMENT PROJECT SERVICE AREA CONTAINS 52.4% RESIDENTS THAT MEET THE LOW-MODERATE INCOME (LMI) DEFINITION (LESS THAN 80% AREA MEDIAN INCOME)
- TOTAL POPULATION IN SERVICE AREA = 1575 PERSONS
- LMI POPULATION IN SERVICE AREA = 825 PERSONS / 1575 = 52.4%



Hardin County



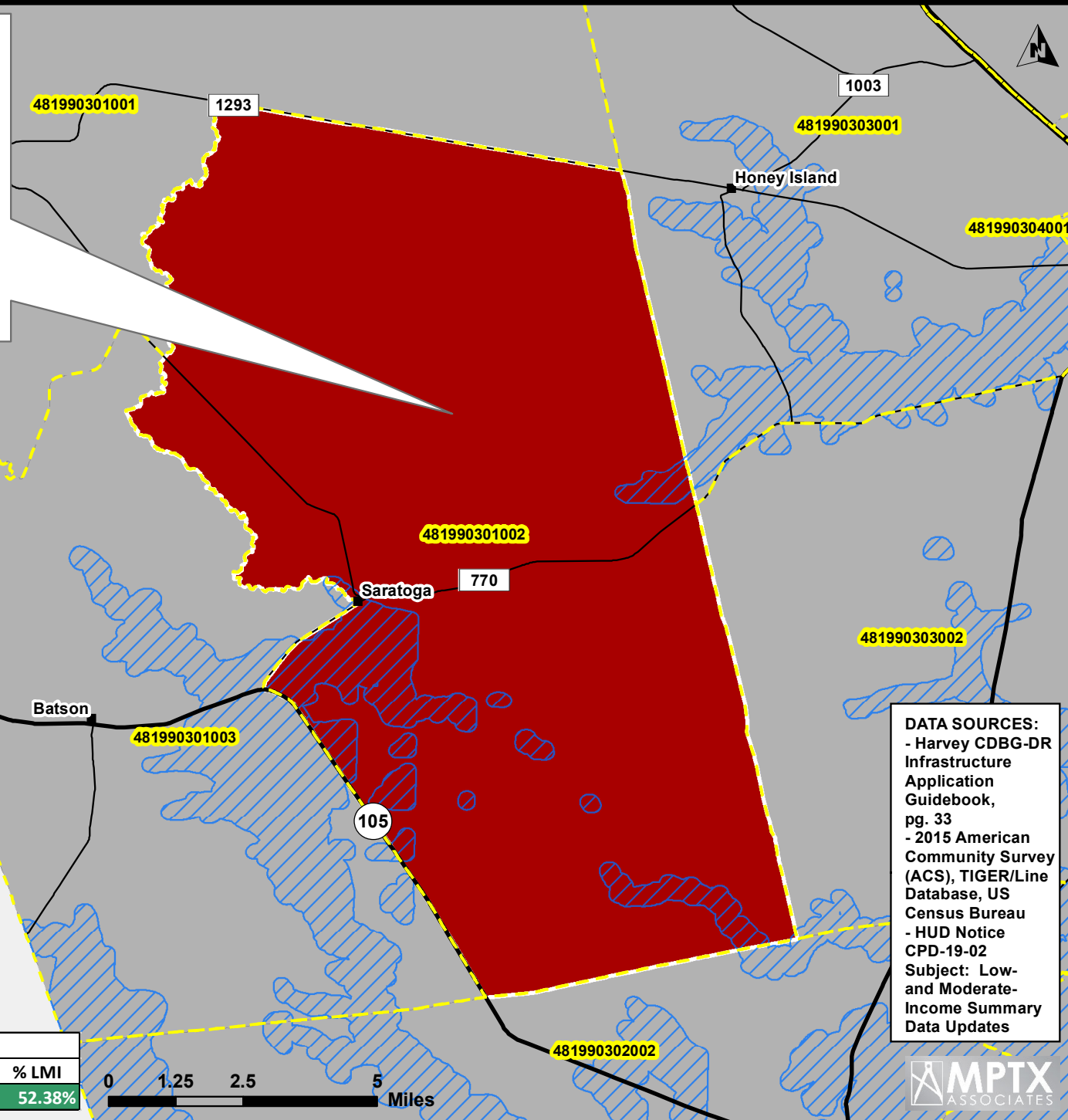
Map Extent Within Hardin County

### Legend

- Service Area
- Hurricane Harvey Inundation
- Census Block Groups
- Communities

### CENSUS BLOCK GROUPS

#	CBG	LOW-MOD POP.	TOTAL POP.	% LMI
33	481990301002	825	1525	52.38%



**DATA SOURCES:**

- Harvey CDBG-DR Infrastructure Application Guidebook, pg. 33
- 2015 American Community Survey (ACS), TIGER/Line Database, US Census Bureau
- HUD Notice CPD-19-02 Subject: Low- and Moderate- Income Summary Data Updates





DP05

## ACS DEMOGRAPHIC AND HOUSING ESTIMATES

2013-2017 American Community Survey 5-Year Estimates

Supporting documentation on code lists, subject definitions, data accuracy, and statistical testing can be found on the American Community Survey website in the Technical Documentation section.

Sample size and data quality measures (including coverage rates, allocation rates, and response rates) can be found on the American Community Survey website in the Methodology section.

Although the American Community Survey (ACS) produces population, demographic and housing unit estimates, it is the Census Bureau's Population Estimates Program that produces and disseminates the official estimates of the population for the nation, states, counties, cities, and towns and estimates of housing units for states and counties.

Subject	Census Tract 301, Hardin County, Texas			
	Estimate	Margin of Error	Percent	Percent Margin of Error
<b>SEX AND AGE</b>				
Total population	3,426	+/-658	3,426	(X)
Male	1,494	+/-329	43.6%	+/-4.5
Female	1,932	+/-396	56.4%	+/-4.5
Sex ratio (males per 100 females)	77.3	+/-14.3	(X)	(X)
Under 5 years	73	+/-67	2.1%	+/-1.9
5 to 9 years	226	+/-150	6.6%	+/-4.0
10 to 14 years	279	+/-134	8.1%	+/-3.6
15 to 19 years	347	+/-184	10.1%	+/-4.7
20 to 24 years	131	+/-89	3.8%	+/-2.5
25 to 34 years	496	+/-267	14.5%	+/-6.9
35 to 44 years	481	+/-189	14.0%	+/-5.2
45 to 54 years	476	+/-209	13.9%	+/-5.3
55 to 59 years	157	+/-67	4.6%	+/-2.0
60 to 64 years	239	+/-104	7.0%	+/-3.1
65 to 74 years	377	+/-174	11.0%	+/-5.2
75 to 84 years	138	+/-92	4.0%	+/-2.6
85 years and over	6	+/-11	0.2%	+/-0.3
Median age (years)	40.1	+/-5.6	(X)	(X)
Under 18 years	857	+/-253	25.0%	+/-3.7
16 years and over	2,735	+/-485	79.8%	+/-4.0
18 years and over	2,569	+/-443	75.0%	+/-3.7
21 years and over	2,480	+/-433	72.4%	+/-4.1
62 years and over	675	+/-222	19.7%	+/-6.3
65 years and over	521	+/-181	15.2%	+/-5.2
18 years and over	2,569	+/-443	2,569	(X)
Male	1,077	+/-205	41.9%	+/-4.9
Female	1,492	+/-305	58.1%	+/-4.9
Sex ratio (males per 100 females)	72.2	+/-14.8	(X)	(X)



Subject	Census Tract 301, Hardin County, Texas			
	Estimate	Margin of Error	Percent	Percent Margin of Error
65 years and over	521	+/-181	521	(X)
Male	241	+/-104	46.3%	+/-16.9
Female	280	+/-148	53.7%	+/-16.9
Sex ratio (males per 100 females)	86.1	+/-65.2	(X)	(X)
RACE				
Total population	3,426	+/-658	3,426	(X)
One race	3,408	+/-655	99.5%	+/-0.7
Two or more races	18	+/-23	0.5%	+/-0.7
One race	3,408	+/-655	99.5%	+/-0.7
White	3,402	+/-656	99.3%	+/-0.8
Black or African American	6	+/-11	0.2%	+/-0.3
American Indian and Alaska Native	0	+/-13	0.0%	+/-1.2
Cherokee tribal grouping	0	+/-13	0.0%	+/-1.2
Chippewa tribal grouping	0	+/-13	0.0%	+/-1.2
Navajo tribal grouping	0	+/-13	0.0%	+/-1.2
Sioux tribal grouping	0	+/-13	0.0%	+/-1.2
Asian	0	+/-13	0.0%	+/-1.2
Asian Indian	0	+/-13	0.0%	+/-1.2
Chinese	0	+/-13	0.0%	+/-1.2
Filipino	0	+/-13	0.0%	+/-1.2
Japanese	0	+/-13	0.0%	+/-1.2
Korean	0	+/-13	0.0%	+/-1.2
Vietnamese	0	+/-13	0.0%	+/-1.2
Other Asian	0	+/-13	0.0%	+/-1.2
Native Hawaiian and Other Pacific Islander	0	+/-13	0.0%	+/-1.2
Native Hawaiian	0	+/-13	0.0%	+/-1.2
Guamanian or Chamorro	0	+/-13	0.0%	+/-1.2
Samoa	0	+/-13	0.0%	+/-1.2
Other Pacific Islander	0	+/-13	0.0%	+/-1.2
Some other race	0	+/-13	0.0%	+/-1.2
Two or more races	18	+/-23	0.5%	+/-0.7
White and Black or African American	0	+/-13	0.0%	+/-1.2
White and American Indian and Alaska Native	18	+/-23	0.5%	+/-0.7
White and Asian	0	+/-13	0.0%	+/-1.2
Black or African American and American Indian and Alaska Native	0	+/-13	0.0%	+/-1.2
Race alone or in combination with one or more other races				
Total population	3,426	+/-658	3,426	(X)
White	3,420	+/-659	99.8%	+/-0.3
Black or African American	6	+/-11	0.2%	+/-0.3
American Indian and Alaska Native	18	+/-23	0.5%	+/-0.7
Asian	0	+/-13	0.0%	+/-1.2
Native Hawaiian and Other Pacific Islander	0	+/-13	0.0%	+/-1.2
Some other race	0	+/-13	0.0%	+/-1.2
HISPANIC OR LATINO AND RACE				
Total population	3,426	+/-658	3,426	(X)
Hispanic or Latino (of any race)	75	+/-109	2.2%	+/-3.1
Mexican	75	+/-109	2.2%	+/-3.1
Puerto Rican	0	+/-13	0.0%	+/-1.2
Cuban	0	+/-13	0.0%	+/-1.2
Other Hispanic or Latino	0	+/-13	0.0%	+/-1.2
Not Hispanic or Latino	3,351	+/-626	97.8%	+/-3.1
White alone	3,327	+/-626	97.1%	+/-3.4
Black or African American alone	6	+/-11	0.2%	+/-0.3
American Indian and Alaska Native alone	0	+/-13	0.0%	+/-1.2

Subject	Census Tract 301, Hardin County, Texas			
	Estimate	Margin of Error	Percent	Percent Margin of Error
Asian alone	0	+/-13	0.0%	+/-1.2
Native Hawaiian and Other Pacific Islander alone	0	+/-13	0.0%	+/-1.2
Some other race alone	0	+/-13	0.0%	+/-1.2
Two or more races	18	+/-23	0.5%	+/-0.7
Two races including Some other race	0	+/-13	0.0%	+/-1.2
Two races excluding Some other race, and Three or more races	18	+/-23	0.5%	+/-0.7
Total housing units	1,538	+/-113	(X)	(X)
CITIZEN, VOTING AGE POPULATION				
Citizen, 18 and over population	2,569	+/-443	2,569	(X)
Male	1,077	+/-205	41.9%	+/-4.9
Female	1,492	+/-305	58.1%	+/-4.9

Data are based on a sample and are subject to sampling variability. The degree of uncertainty for an estimate arising from sampling variability is represented through the use of a margin of error. The value shown here is the 90 percent margin of error. The margin of error can be interpreted roughly as providing a 90 percent probability that the interval defined by the estimate minus the margin of error and the estimate plus the margin of error (the lower and upper confidence bounds) contains the true value. In addition to sampling variability, the ACS estimates are subject to nonsampling error (for a discussion of nonsampling variability, see Accuracy of the Data). The effect of nonsampling error is not represented in these tables.

For more information on understanding race and Hispanic origin data, please see the Census 2010 Brief entitled, Overview of Race and Hispanic Origin: 2010, issued March 2011. (pdf format)

While the 2013-2017 American Community Survey (ACS) data generally reflect the February 2013 Office of Management and Budget (OMB) definitions of metropolitan and micropolitan statistical areas; in certain instances the names, codes, and boundaries of the principal cities shown in ACS tables may differ from the OMB definitions due to differences in the effective dates of the geographic entities.

Estimates of urban and rural populations, housing units, and characteristics reflect boundaries of urban areas defined based on Census 2010 data. As a result, data for urban and rural areas from the ACS do not necessarily reflect the results of ongoing urbanization.

Source: U.S. Census Bureau, 2013-2017 American Community Survey 5-Year Estimates

#### Explanation of Symbols:

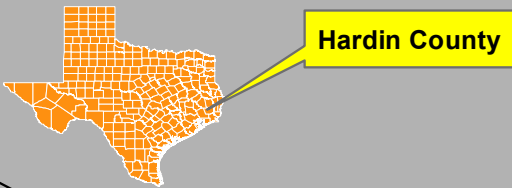
1. An '\*\*\*' entry in the margin of error column indicates that either no sample observations or too few sample observations were available to compute a standard error and thus the margin of error. A statistical test is not appropriate.
2. An '-' entry in the estimate column indicates that either no sample observations or too few sample observations were available to compute an estimate, or a ratio of medians cannot be calculated because one or both of the median estimates falls in the lowest interval or upper interval of an open-ended distribution.
3. An '-' following a median estimate means the median falls in the lowest interval of an open-ended distribution.
4. An '+' following a median estimate means the median falls in the upper interval of an open-ended distribution.
5. An '\*\*\*' entry in the margin of error column indicates that the median falls in the lowest interval or upper interval of an open-ended distribution. A statistical test is not appropriate.
6. An '\*\*\*\*\*' entry in the margin of error column indicates that the estimate is controlled. A statistical test for sampling variability is not appropriate.
7. An 'N' entry in the estimate and margin of error columns indicates that data for this geographic area cannot be displayed because the number of sample cases is too small.
8. An '(X)' means that the estimate is not applicable or not available.

# PROJECT BENEFICIARY SERVICE AREA MAP

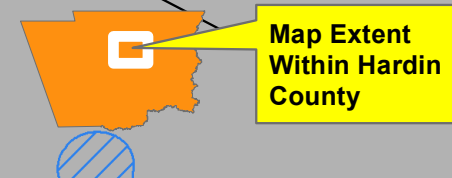
## KOUNTZE ESD LMI FIRE PROTECTION EQUIPMENT



- RED AREA INDICATES PROJECT BENEFICIARY SERVICE AREA
- BLUE AREA INDICATES HURRICANE HARVEY INUNDATION
- KOUNTZE ESD FIRE PROTECTION EQUIPMENT PROJECT SERVICE AREA CONTAINS 55.2% RESIDENTS THAT MEET THE LOW-MODERATE INCOME (LMI) DEFINITION (LESS THAN 80% AREA MEDIAN INCOME)
- TOTAL POPULATION IN SERVICE AREA = 1765 PERSONS
- LMI POPULATION IN SERVICE AREA = 975 PERSONS / 1765 = 55.2%



Hardin County



Map Extent Within Hardin County

### Legend

- Service Area
- Hurricane Harvey Inundation
- Census Block Groups
- Communities

CENSUS BLOCK GROUPS				
#	CBG	LOW-MOD POP.	TOTAL POP.	% LMI
32	481990304001	460	1040	44.23%
37	481990304002	515	725	71.03%

0 0.25 0.5 1 Miles

**DATA SOURCES:**

- Harvey CDBG-DR Infrastructure Application Guidebook, pg. 33
- 2015 American Community Survey (ACS), TIGER/Line Database, US Census Bureau
- HUD Notice CPD-19-02 Subject: Low- and Moderate-Income Summary Data Updates

**MPTX**  
ASSOCIATES



DP05

## ACS DEMOGRAPHIC AND HOUSING ESTIMATES

2013-2017 American Community Survey 5-Year Estimates

Supporting documentation on code lists, subject definitions, data accuracy, and statistical testing can be found on the American Community Survey website in the Technical Documentation section.

Sample size and data quality measures (including coverage rates, allocation rates, and response rates) can be found on the American Community Survey website in the Methodology section.

Although the American Community Survey (ACS) produces population, demographic and housing unit estimates, it is the Census Bureau's Population Estimates Program that produces and disseminates the official estimates of the population for the nation, states, counties, cities, and towns and estimates of housing units for states and counties.

Subject	Census Tract 304, Hardin County, Texas			
	Estimate	Margin of Error	Percent	Percent Margin of Error
<b>SEX AND AGE</b>				
Total population	2,291	+/-369	2,291	(X)
Male	1,170	+/-231	51.1%	+/-4.5
Female	1,121	+/-190	48.9%	+/-4.5
Sex ratio (males per 100 females)	104.4	+/-18.8	(X)	(X)
Under 5 years	138	+/-74	6.0%	+/-2.7
5 to 9 years	111	+/-44	4.8%	+/-1.7
10 to 14 years	125	+/-49	5.5%	+/-2.0
15 to 19 years	126	+/-55	5.5%	+/-2.0
20 to 24 years	168	+/-82	7.3%	+/-3.1
25 to 34 years	462	+/-147	20.2%	+/-5.1
35 to 44 years	232	+/-86	10.1%	+/-3.2
45 to 54 years	216	+/-72	9.4%	+/-2.8
55 to 59 years	206	+/-63	9.0%	+/-3.1
60 to 64 years	91	+/-49	4.0%	+/-2.1
65 to 74 years	225	+/-72	9.8%	+/-3.1
75 to 84 years	133	+/-71	5.8%	+/-3.0
85 years and over	58	+/-38	2.5%	+/-1.7
Median age (years)	35.5	+/-6.6	(X)	(X)
Under 18 years	466	+/-140	20.3%	+/-4.3
16 years and over	1,881	+/-299	82.1%	+/-3.8
18 years and over	1,825	+/-287	79.7%	+/-4.3
21 years and over	1,767	+/-280	77.1%	+/-4.7
62 years and over	451	+/-93	19.7%	+/-3.9
65 years and over	416	+/-88	18.2%	+/-3.8
18 years and over	1,825	+/-287	1,825	(X)
Male	873	+/-180	47.8%	+/-4.9
Female	952	+/-155	52.2%	+/-4.9
Sex ratio (males per 100 females)	91.7	+/-18.2	(X)	(X)

Subject	Census Tract 304, Hardin County, Texas			
	Estimate	Margin of Error	Percent	Percent Margin of Error
65 years and over	416	+/-88	416	(X)
Male	157	+/-54	37.7%	+/-9.7
Female	259	+/-67	62.3%	+/-9.7
Sex ratio (males per 100 females)	60.6	+/-26.1	(X)	(X)
RACE				
Total population	2,291	+/-369	2,291	(X)
One race	2,259	+/-368	98.6%	+/-1.1
Two or more races	32	+/-26	1.4%	+/-1.1
One race	2,259	+/-368	98.6%	+/-1.1
White	1,927	+/-330	84.1%	+/-6.2
Black or African American	309	+/-153	13.5%	+/-6.0
American Indian and Alaska Native	0	+/-13	0.0%	+/-1.7
Cherokee tribal grouping	0	+/-13	0.0%	+/-1.7
Chippewa tribal grouping	0	+/-13	0.0%	+/-1.7
Navajo tribal grouping	0	+/-13	0.0%	+/-1.7
Sioux tribal grouping	0	+/-13	0.0%	+/-1.7
Asian	23	+/-35	1.0%	+/-1.5
Asian Indian	0	+/-13	0.0%	+/-1.7
Chinese	0	+/-13	0.0%	+/-1.7
Filipino	23	+/-35	1.0%	+/-1.5
Japanese	0	+/-13	0.0%	+/-1.7
Korean	0	+/-13	0.0%	+/-1.7
Vietnamese	0	+/-13	0.0%	+/-1.7
Other Asian	0	+/-13	0.0%	+/-1.7
Native Hawaiian and Other Pacific Islander	0	+/-13	0.0%	+/-1.7
Native Hawaiian	0	+/-13	0.0%	+/-1.7
Guamanian or Chamorro	0	+/-13	0.0%	+/-1.7
Samoan	0	+/-13	0.0%	+/-1.7
Other Pacific Islander	0	+/-13	0.0%	+/-1.7
Some other race	0	+/-13	0.0%	+/-1.7
Two or more races	32	+/-26	1.4%	+/-1.1
White and Black or African American	27	+/-25	1.2%	+/-1.1
White and American Indian and Alaska Native	5	+/-9	0.2%	+/-0.4
White and Asian	0	+/-13	0.0%	+/-1.7
Black or African American and American Indian and Alaska Native	0	+/-13	0.0%	+/-1.7
Race alone or in combination with one or more other races				
Total population	2,291	+/-369	2,291	(X)
White	1,959	+/-328	85.5%	+/-5.8
Black or African American	336	+/-160	14.7%	+/-6.3
American Indian and Alaska Native	5	+/-9	0.2%	+/-0.4
Asian	23	+/-35	1.0%	+/-1.5
Native Hawaiian and Other Pacific Islander	0	+/-13	0.0%	+/-1.7
Some other race	0	+/-13	0.0%	+/-1.7
HISPANIC OR LATINO AND RACE				
Total population	2,291	+/-369	2,291	(X)
Hispanic or Latino (of any race)	330	+/-182	14.4%	+/-6.7
Mexican	330	+/-182	14.4%	+/-6.7
Puerto Rican	0	+/-13	0.0%	+/-1.7
Cuban	0	+/-13	0.0%	+/-1.7
Other Hispanic or Latino	0	+/-13	0.0%	+/-1.7
Not Hispanic or Latino	1,961	+/-292	85.6%	+/-6.7
White alone	1,597	+/-242	69.7%	+/-7.6
Black or African American alone	309	+/-153	13.5%	+/-6.0
American Indian and Alaska Native alone	0	+/-13	0.0%	+/-1.7

Subject	Census Tract 304, Hardin County, Texas			
	Estimate	Margin of Error	Percent	Percent Margin of Error
Asian alone	23	+/-35	1.0%	+/-1.5
Native Hawaiian and Other Pacific Islander alone	0	+/-13	0.0%	+/-1.7
Some other race alone	0	+/-13	0.0%	+/-1.7
Two or more races	32	+/-26	1.4%	+/-1.1
Two races including Some other race	0	+/-13	0.0%	+/-1.7
Two races excluding Some other race, and Three or more races	32	+/-26	1.4%	+/-1.1
Total housing units	973	+/-93	(X)	(X)
CITIZEN, VOTING AGE POPULATION				
Citizen, 18 and over population	1,650	+/-255	1,650	(X)
Male	741	+/-150	44.9%	+/-4.7
Female	909	+/-149	55.1%	+/-4.7

Data are based on a sample and are subject to sampling variability. The degree of uncertainty for an estimate arising from sampling variability is represented through the use of a margin of error. The value shown here is the 90 percent margin of error. The margin of error can be interpreted roughly as providing a 90 percent probability that the interval defined by the estimate minus the margin of error and the estimate plus the margin of error (the lower and upper confidence bounds) contains the true value. In addition to sampling variability, the ACS estimates are subject to nonsampling error (for a discussion of nonsampling variability, see Accuracy of the Data). The effect of nonsampling error is not represented in these tables.

For more information on understanding race and Hispanic origin data, please see the Census 2010 Brief entitled, Overview of Race and Hispanic Origin: 2010, issued March 2011. (pdf format)

While the 2013-2017 American Community Survey (ACS) data generally reflect the February 2013 Office of Management and Budget (OMB) definitions of metropolitan and micropolitan statistical areas; in certain instances the names, codes, and boundaries of the principal cities shown in ACS tables may differ from the OMB definitions due to differences in the effective dates of the geographic entities.

Estimates of urban and rural populations, housing units, and characteristics reflect boundaries of urban areas defined based on Census 2010 data. As a result, data for urban and rural areas from the ACS do not necessarily reflect the results of ongoing urbanization.

Source: U.S. Census Bureau, 2013-2017 American Community Survey 5-Year Estimates

#### Explanation of Symbols:

1. An '\*\*\*' entry in the margin of error column indicates that either no sample observations or too few sample observations were available to compute a standard error and thus the margin of error. A statistical test is not appropriate.
2. An '-' entry in the estimate column indicates that either no sample observations or too few sample observations were available to compute an estimate, or a ratio of medians cannot be calculated because one or both of the median estimates falls in the lowest interval or upper interval of an open-ended distribution.
3. An '-' following a median estimate means the median falls in the lowest interval of an open-ended distribution.
4. An '+' following a median estimate means the median falls in the upper interval of an open-ended distribution.
5. An '\*\*\*' entry in the margin of error column indicates that the median falls in the lowest interval or upper interval of an open-ended distribution. A statistical test is not appropriate.
6. An '\*\*\*\*\*' entry in the margin of error column indicates that the estimate is controlled. A statistical test for sampling variability is not appropriate.
7. An 'N' entry in the estimate and margin of error columns indicates that data for this geographic area cannot be displayed because the number of sample cases is too small.
8. An '(X)' means that the estimate is not applicable or not available.

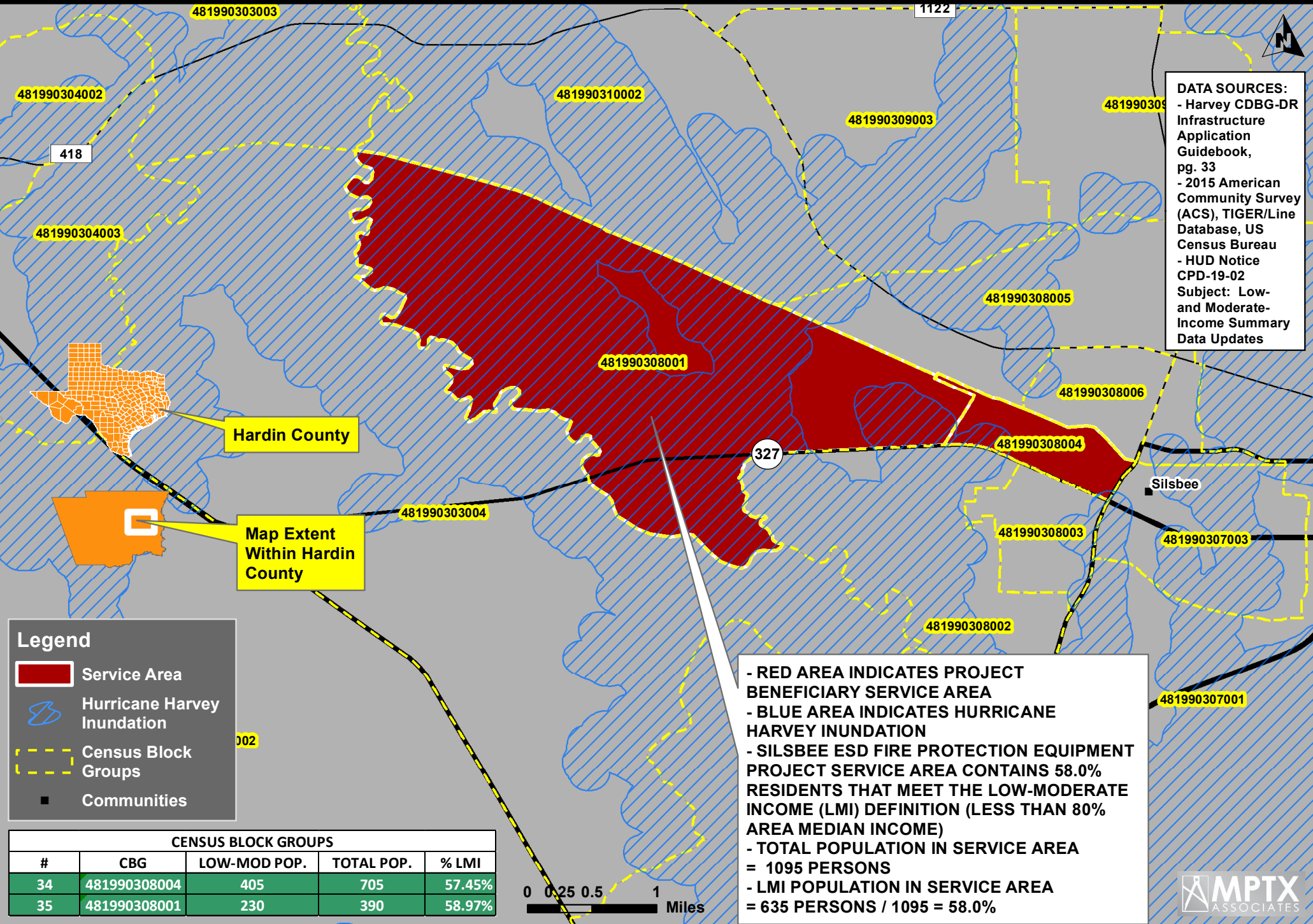


# PROJECT BENEFICIARY SERVICE AREA MAP

## SILSBEE ESD LMI FIRE PROTECTION EQUIPMENT



**DATA SOURCES:**  
 - Harvey CDBG-DR Infrastructure Application Guidebook, pg. 33  
 - 2015 American Community Survey (ACS), TIGER/Line Database, US Census Bureau  
 - HUD Notice CPD-19-02 Subject: Low- and Moderate-Income Summary Data Updates





DP05

## ACS DEMOGRAPHIC AND HOUSING ESTIMATES

2013-2017 American Community Survey 5-Year Estimates

Supporting documentation on code lists, subject definitions, data accuracy, and statistical testing can be found on the American Community Survey website in the Technical Documentation section.

Sample size and data quality measures (including coverage rates, allocation rates, and response rates) can be found on the American Community Survey website in the Methodology section.

Although the American Community Survey (ACS) produces population, demographic and housing unit estimates, it is the Census Bureau's Population Estimates Program that produces and disseminates the official estimates of the population for the nation, states, counties, cities, and towns and estimates of housing units for states and counties.

Subject	Census Tract 308, Hardin County, Texas			
	Estimate	Margin of Error	Percent	Percent Margin of Error
<b>SEX AND AGE</b>				
Total population	3,935	+/-414	3,935	(X)
Male	1,876	+/-222	47.7%	+/-3.2
Female	2,059	+/-264	52.3%	+/-3.2
Sex ratio (males per 100 females)	91.1	+/-12.0	(X)	(X)
Under 5 years	172	+/-95	4.4%	+/-2.3
5 to 9 years	331	+/-167	8.4%	+/-3.9
10 to 14 years	202	+/-89	5.1%	+/-2.2
15 to 19 years	319	+/-143	8.1%	+/-3.2
20 to 24 years	131	+/-83	3.3%	+/-2.1
25 to 34 years	533	+/-182	13.5%	+/-4.1
35 to 44 years	468	+/-146	11.9%	+/-3.7
45 to 54 years	309	+/-126	7.9%	+/-3.3
55 to 59 years	257	+/-100	6.5%	+/-2.5
60 to 64 years	397	+/-106	10.1%	+/-2.7
65 to 74 years	510	+/-114	13.0%	+/-3.2
75 to 84 years	202	+/-90	5.1%	+/-2.4
85 years and over	104	+/-50	2.6%	+/-1.3
Median age (years)	38.6	+/-6.3	(X)	(X)
Under 18 years	888	+/-210	22.6%	+/-3.8
16 years and over	3,102	+/-287	78.8%	+/-4.3
18 years and over	3,047	+/-282	77.4%	+/-3.8
21 years and over	2,911	+/-247	74.0%	+/-5.1
62 years and over	1,020	+/-166	25.9%	+/-5.0
65 years and over	816	+/-147	20.7%	+/-4.4
18 years and over	3,047	+/-282	3,047	(X)
Male	1,382	+/-187	45.4%	+/-4.4
Female	1,665	+/-201	54.6%	+/-4.4
Sex ratio (males per 100 females)	83.0	+/-15.0	(X)	(X)



Subject	Census Tract 308, Hardin County, Texas			
	Estimate	Margin of Error	Percent	Percent Margin of Error
65 years and over	816	+/-147	816	(X)
Male	322	+/-94	39.5%	+/-8.2
Female	494	+/-103	60.5%	+/-8.2
Sex ratio (males per 100 females)	65.2	+/-22.8	(X)	(X)
RACE				
Total population	3,935	+/-414	3,935	(X)
One race	3,928	+/-413	99.8%	+/-0.3
Two or more races	7	+/-13	0.2%	+/-0.3
One race	3,928	+/-413	99.8%	+/-0.3
White	2,424	+/-341	61.6%	+/-6.4
Black or African American	1,491	+/-306	37.9%	+/-6.5
American Indian and Alaska Native	0	+/-13	0.0%	+/-1.0
Cherokee tribal grouping	0	+/-13	0.0%	+/-1.0
Chippewa tribal grouping	0	+/-13	0.0%	+/-1.0
Navajo tribal grouping	0	+/-13	0.0%	+/-1.0
Sioux tribal grouping	0	+/-13	0.0%	+/-1.0
Asian	13	+/-19	0.3%	+/-0.5
Asian Indian	0	+/-13	0.0%	+/-1.0
Chinese	0	+/-13	0.0%	+/-1.0
Filipino	0	+/-13	0.0%	+/-1.0
Japanese	0	+/-13	0.0%	+/-1.0
Korean	0	+/-13	0.0%	+/-1.0
Vietnamese	13	+/-19	0.3%	+/-0.5
Other Asian	0	+/-13	0.0%	+/-1.0
Native Hawaiian and Other Pacific Islander	0	+/-13	0.0%	+/-1.0
Native Hawaiian	0	+/-13	0.0%	+/-1.0
Guamanian or Chamorro	0	+/-13	0.0%	+/-1.0
Samoan	0	+/-13	0.0%	+/-1.0
Other Pacific Islander	0	+/-13	0.0%	+/-1.0
Some other race	0	+/-13	0.0%	+/-1.0
Two or more races	7	+/-13	0.2%	+/-0.3
White and Black or African American	0	+/-13	0.0%	+/-1.0
White and American Indian and Alaska Native	7	+/-13	0.2%	+/-0.3
White and Asian	0	+/-13	0.0%	+/-1.0
Black or African American and American Indian and Alaska Native	0	+/-13	0.0%	+/-1.0
Race alone or in combination with one or more other races				
Total population	3,935	+/-414	3,935	(X)
White	2,431	+/-342	61.8%	+/-6.5
Black or African American	1,491	+/-306	37.9%	+/-6.5
American Indian and Alaska Native	7	+/-13	0.2%	+/-0.3
Asian	13	+/-19	0.3%	+/-0.5
Native Hawaiian and Other Pacific Islander	0	+/-13	0.0%	+/-1.0
Some other race	0	+/-13	0.0%	+/-1.0
HISPANIC OR LATINO AND RACE				
Total population	3,935	+/-414	3,935	(X)
Hispanic or Latino (of any race)	197	+/-127	5.0%	+/-3.1
Mexican	178	+/-118	4.5%	+/-2.9
Puerto Rican	0	+/-13	0.0%	+/-1.0
Cuban	0	+/-13	0.0%	+/-1.0
Other Hispanic or Latino	19	+/-30	0.5%	+/-0.8
Not Hispanic or Latino	3,738	+/-399	95.0%	+/-3.1
White alone	2,227	+/-335	56.6%	+/-7.0
Black or African American alone	1,491	+/-306	37.9%	+/-6.5
American Indian and Alaska Native alone	0	+/-13	0.0%	+/-1.0

Subject	Census Tract 308, Hardin County, Texas			
	Estimate	Margin of Error	Percent	Percent Margin of Error
Asian alone	13	+/-19	0.3%	+/-0.5
Native Hawaiian and Other Pacific Islander alone	0	+/-13	0.0%	+/-1.0
Some other race alone	0	+/-13	0.0%	+/-1.0
Two or more races	7	+/-13	0.2%	+/-0.3
Two races including Some other race	0	+/-13	0.0%	+/-1.0
Two races excluding Some other race, and Three or more races	7	+/-13	0.2%	+/-0.3
Total housing units	2,138	+/-141	(X)	(X)
CITIZEN, VOTING AGE POPULATION				
Citizen, 18 and over population	3,047	+/-282	3,047	(X)
Male	1,382	+/-187	45.4%	+/-4.4
Female	1,665	+/-201	54.6%	+/-4.4

Data are based on a sample and are subject to sampling variability. The degree of uncertainty for an estimate arising from sampling variability is represented through the use of a margin of error. The value shown here is the 90 percent margin of error. The margin of error can be interpreted roughly as providing a 90 percent probability that the interval defined by the estimate minus the margin of error and the estimate plus the margin of error (the lower and upper confidence bounds) contains the true value. In addition to sampling variability, the ACS estimates are subject to nonsampling error (for a discussion of nonsampling variability, see Accuracy of the Data). The effect of nonsampling error is not represented in these tables.

For more information on understanding race and Hispanic origin data, please see the Census 2010 Brief entitled, Overview of Race and Hispanic Origin: 2010, issued March 2011. (pdf format)

While the 2013-2017 American Community Survey (ACS) data generally reflect the February 2013 Office of Management and Budget (OMB) definitions of metropolitan and micropolitan statistical areas; in certain instances the names, codes, and boundaries of the principal cities shown in ACS tables may differ from the OMB definitions due to differences in the effective dates of the geographic entities.

Estimates of urban and rural populations, housing units, and characteristics reflect boundaries of urban areas defined based on Census 2010 data. As a result, data for urban and rural areas from the ACS do not necessarily reflect the results of ongoing urbanization.

Source: U.S. Census Bureau, 2013-2017 American Community Survey 5-Year Estimates

#### Explanation of Symbols:

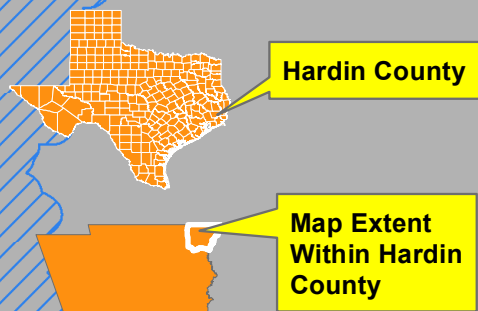
1. An '\*\*\*' entry in the margin of error column indicates that either no sample observations or too few sample observations were available to compute a standard error and thus the margin of error. A statistical test is not appropriate.
2. An '-' entry in the estimate column indicates that either no sample observations or too few sample observations were available to compute an estimate, or a ratio of medians cannot be calculated because one or both of the median estimates falls in the lowest interval or upper interval of an open-ended distribution.
3. An '-' following a median estimate means the median falls in the lowest interval of an open-ended distribution.
4. An '+' following a median estimate means the median falls in the upper interval of an open-ended distribution.
5. An '\*\*\*' entry in the margin of error column indicates that the median falls in the lowest interval or upper interval of an open-ended distribution. A statistical test is not appropriate.
6. An '\*\*\*\*\*' entry in the margin of error column indicates that the estimate is controlled. A statistical test for sampling variability is not appropriate.
7. An 'N' entry in the estimate and margin of error columns indicates that data for this geographic area cannot be displayed because the number of sample cases is too small.
8. An '(X)' means that the estimate is not applicable or not available.

# PROJECT BENEFICIARY SERVICE AREA MAP

## NORTH SILSBEE ESD LMI FIRE PROTECTION EQUIPMENT



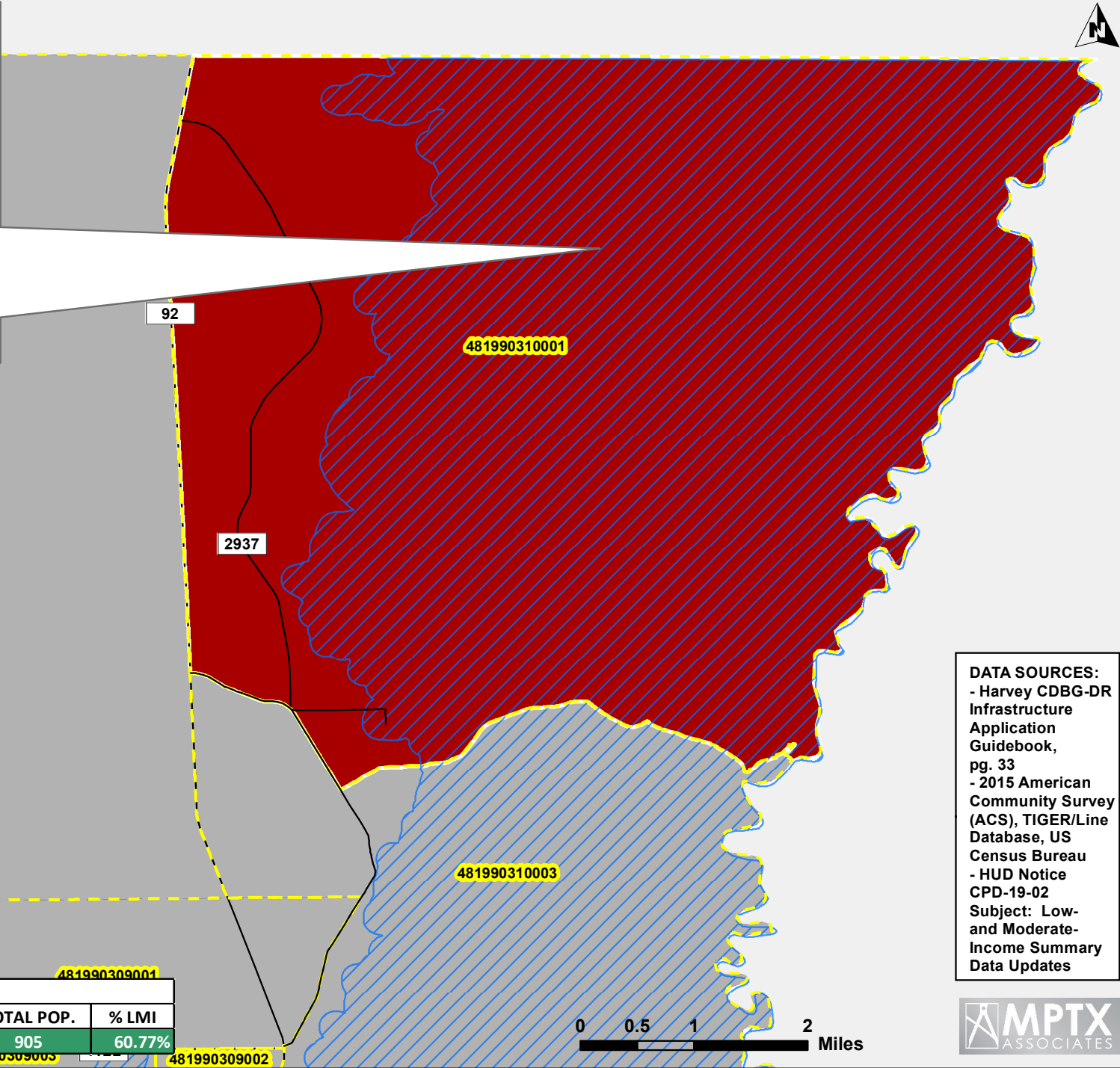
- RED AREA INDICATES PROJECT BENEFICIARY SERVICE AREA
- BLUE AREA INDICATES HURRICANE HARVEY INUNDATION
- NORTH SILSBEE ESD FIRE PROTECTION EQUIPMENT PROJECT SERVICE AREA CONTAINS 60.8% RESIDENTS THAT MEET THE LOW-MODERATE INCOME (LMI) DEFINITION (LESS THAN 80% AREA MEDIAN INCOME)
- TOTAL POPULATION IN SERVICE AREA = 905 PERSONS
- LMI POPULATION IN SERVICE AREA = 550 PERSONS / 905 = 60.8%



**Legend**

- Service Area
- Hurricane Harvey Inundation
- Census Block Groups
- Communities

CENSUS BLOCK GROUPS				
#	CBG	LOW-MOD POP.	TOTAL POP.	% LMI
36	481990310001	550	905	60.77%



**DATA SOURCES:**

- Harvey CDBG-DR Infrastructure Application Guidebook, pg. 33
- 2015 American Community Survey (ACS), TIGER/Line Database, US Census Bureau
- HUD Notice CPD-19-02
- Subject: Low- and Moderate-Income Summary Data Updates





DP05

## ACS DEMOGRAPHIC AND HOUSING ESTIMATES

2013-2017 American Community Survey 5-Year Estimates

Supporting documentation on code lists, subject definitions, data accuracy, and statistical testing can be found on the American Community Survey website in the Technical Documentation section.

Sample size and data quality measures (including coverage rates, allocation rates, and response rates) can be found on the American Community Survey website in the Methodology section.

Although the American Community Survey (ACS) produces population, demographic and housing unit estimates, it is the Census Bureau's Population Estimates Program that produces and disseminates the official estimates of the population for the nation, states, counties, cities, and towns and estimates of housing units for states and counties.

Subject	Census Tract 310, Hardin County, Texas			
	Estimate	Margin of Error	Percent	Percent Margin of Error
<b>SEX AND AGE</b>				
Total population	3,794	+/-478	3,794	(X)
Male	1,854	+/-280	48.9%	+/-3.9
Female	1,940	+/-283	51.1%	+/-3.9
Sex ratio (males per 100 females)	95.6	+/-14.8	(X)	(X)
Under 5 years	87	+/-59	2.3%	+/-1.6
5 to 9 years	162	+/-90	4.3%	+/-2.2
10 to 14 years	336	+/-145	8.9%	+/-3.2
15 to 19 years	296	+/-121	7.8%	+/-3.0
20 to 24 years	174	+/-101	4.6%	+/-2.5
25 to 34 years	603	+/-227	15.9%	+/-5.4
35 to 44 years	514	+/-154	13.5%	+/-3.3
45 to 54 years	499	+/-162	13.2%	+/-4.1
55 to 59 years	381	+/-120	10.0%	+/-3.3
60 to 64 years	193	+/-87	5.1%	+/-2.2
65 to 74 years	380	+/-136	10.0%	+/-3.9
75 to 84 years	162	+/-79	4.3%	+/-2.1
85 years and over	7	+/-12	0.2%	+/-0.3
Median age (years)	40.7	+/-4.0	(X)	(X)
Under 18 years	792	+/-219	20.9%	+/-4.2
16 years and over	3,151	+/-357	83.1%	+/-4.3
18 years and over	3,002	+/-344	79.1%	+/-4.2
21 years and over	2,868	+/-337	75.6%	+/-4.7
62 years and over	691	+/-163	18.2%	+/-4.8
65 years and over	549	+/-156	14.5%	+/-4.6
18 years and over	3,002	+/-344	3,002	(X)
Male	1,549	+/-246	51.6%	+/-4.1
Female	1,453	+/-175	48.4%	+/-4.1
Sex ratio (males per 100 females)	106.6	+/-17.6	(X)	(X)

Subject	Census Tract 310, Hardin County, Texas			
	Estimate	Margin of Error	Percent	Percent Margin of Error
65 years and over	549	+/-156	549	(X)
Male	279	+/-97	50.8%	+/-9.6
Female	270	+/-92	49.2%	+/-9.6
Sex ratio (males per 100 females)	103.3	+/-39.3	(X)	(X)
RACE				
Total population	3,794	+/-478	3,794	(X)
One race	3,750	+/-481	98.8%	+/-1.8
Two or more races	44	+/-70	1.2%	+/-1.8
One race	3,750	+/-481	98.8%	+/-1.8
White	3,674	+/-481	96.8%	+/-2.7
Black or African American	20	+/-31	0.5%	+/-0.8
American Indian and Alaska Native	0	+/-13	0.0%	+/-1.0
Cherokee tribal grouping	0	+/-13	0.0%	+/-1.0
Chippewa tribal grouping	0	+/-13	0.0%	+/-1.0
Navajo tribal grouping	0	+/-13	0.0%	+/-1.0
Sioux tribal grouping	0	+/-13	0.0%	+/-1.0
Asian	56	+/-83	1.5%	+/-2.2
Asian Indian	56	+/-83	1.5%	+/-2.2
Chinese	0	+/-13	0.0%	+/-1.0
Filipino	0	+/-13	0.0%	+/-1.0
Japanese	0	+/-13	0.0%	+/-1.0
Korean	0	+/-13	0.0%	+/-1.0
Vietnamese	0	+/-13	0.0%	+/-1.0
Other Asian	0	+/-13	0.0%	+/-1.0
Native Hawaiian and Other Pacific Islander	0	+/-13	0.0%	+/-1.0
Native Hawaiian	0	+/-13	0.0%	+/-1.0
Guamanian or Chamorro	0	+/-13	0.0%	+/-1.0
Samoa	0	+/-13	0.0%	+/-1.0
Other Pacific Islander	0	+/-13	0.0%	+/-1.0
Some other race	0	+/-13	0.0%	+/-1.0
Two or more races	44	+/-70	1.2%	+/-1.8
White and Black or African American	0	+/-13	0.0%	+/-1.0
White and American Indian and Alaska Native	0	+/-13	0.0%	+/-1.0
White and Asian	18	+/-28	0.5%	+/-0.7
Black or African American and American Indian and Alaska Native	0	+/-13	0.0%	+/-1.0
Race alone or in combination with one or more other races				
Total population	3,794	+/-478	3,794	(X)
White	3,718	+/-480	98.0%	+/-2.4
Black or African American	20	+/-31	0.5%	+/-0.8
American Indian and Alaska Native	0	+/-13	0.0%	+/-1.0
Asian	100	+/-98	2.6%	+/-2.6
Native Hawaiian and Other Pacific Islander	0	+/-13	0.0%	+/-1.0
Some other race	26	+/-43	0.7%	+/-1.2
HISPANIC OR LATINO AND RACE				
Total population	3,794	+/-478	3,794	(X)
Hispanic or Latino (of any race)	187	+/-119	4.9%	+/-3.1
Mexican	162	+/-118	4.3%	+/-3.0
Puerto Rican	0	+/-13	0.0%	+/-1.0
Cuban	0	+/-13	0.0%	+/-1.0
Other Hispanic or Latino	25	+/-38	0.7%	+/-1.0
Not Hispanic or Latino	3,607	+/-479	95.1%	+/-3.1
White alone	3,513	+/-479	92.6%	+/-3.9
Black or African American alone	20	+/-31	0.5%	+/-0.8
American Indian and Alaska Native alone	0	+/-13	0.0%	+/-1.0

Subject	Census Tract 310, Hardin County, Texas			
	Estimate	Margin of Error	Percent	Percent Margin of Error
Asian alone	56	+/-83	1.5%	+/-2.2
Native Hawaiian and Other Pacific Islander alone	0	+/-13	0.0%	+/-1.0
Some other race alone	0	+/-13	0.0%	+/-1.0
Two or more races	18	+/-28	0.5%	+/-0.7
Two races including Some other race	0	+/-13	0.0%	+/-1.0
Two races excluding Some other race, and Three or more races	18	+/-28	0.5%	+/-0.7
Total housing units	1,744	+/-102	(X)	(X)
CITIZEN, VOTING AGE POPULATION				
Citizen, 18 and over population	3,002	+/-344	3,002	(X)
Male	1,549	+/-246	51.6%	+/-4.1
Female	1,453	+/-175	48.4%	+/-4.1

Data are based on a sample and are subject to sampling variability. The degree of uncertainty for an estimate arising from sampling variability is represented through the use of a margin of error. The value shown here is the 90 percent margin of error. The margin of error can be interpreted roughly as providing a 90 percent probability that the interval defined by the estimate minus the margin of error and the estimate plus the margin of error (the lower and upper confidence bounds) contains the true value. In addition to sampling variability, the ACS estimates are subject to nonsampling error (for a discussion of nonsampling variability, see Accuracy of the Data). The effect of nonsampling error is not represented in these tables.

For more information on understanding race and Hispanic origin data, please see the Census 2010 Brief entitled, Overview of Race and Hispanic Origin: 2010, issued March 2011. (pdf format)

While the 2013-2017 American Community Survey (ACS) data generally reflect the February 2013 Office of Management and Budget (OMB) definitions of metropolitan and micropolitan statistical areas; in certain instances the names, codes, and boundaries of the principal cities shown in ACS tables may differ from the OMB definitions due to differences in the effective dates of the geographic entities.

Estimates of urban and rural populations, housing units, and characteristics reflect boundaries of urban areas defined based on Census 2010 data. As a result, data for urban and rural areas from the ACS do not necessarily reflect the results of ongoing urbanization.

Source: U.S. Census Bureau, 2013-2017 American Community Survey 5-Year Estimates

#### Explanation of Symbols:

1. An '\*\*\*' entry in the margin of error column indicates that either no sample observations or too few sample observations were available to compute a standard error and thus the margin of error. A statistical test is not appropriate.
2. An '-' entry in the estimate column indicates that either no sample observations or too few sample observations were available to compute an estimate, or a ratio of medians cannot be calculated because one or both of the median estimates falls in the lowest interval or upper interval of an open-ended distribution.
3. An '-' following a median estimate means the median falls in the lowest interval of an open-ended distribution.
4. An '+' following a median estimate means the median falls in the upper interval of an open-ended distribution.
5. An '\*\*\*' entry in the margin of error column indicates that the median falls in the lowest interval or upper interval of an open-ended distribution. A statistical test is not appropriate.
6. An '\*\*\*\*\*' entry in the margin of error column indicates that the estimate is controlled. A statistical test for sampling variability is not appropriate.
7. An 'N' entry in the estimate and margin of error columns indicates that data for this geographic area cannot be displayed because the number of sample cases is too small.
8. An '(X)' means that the estimate is not applicable or not available.

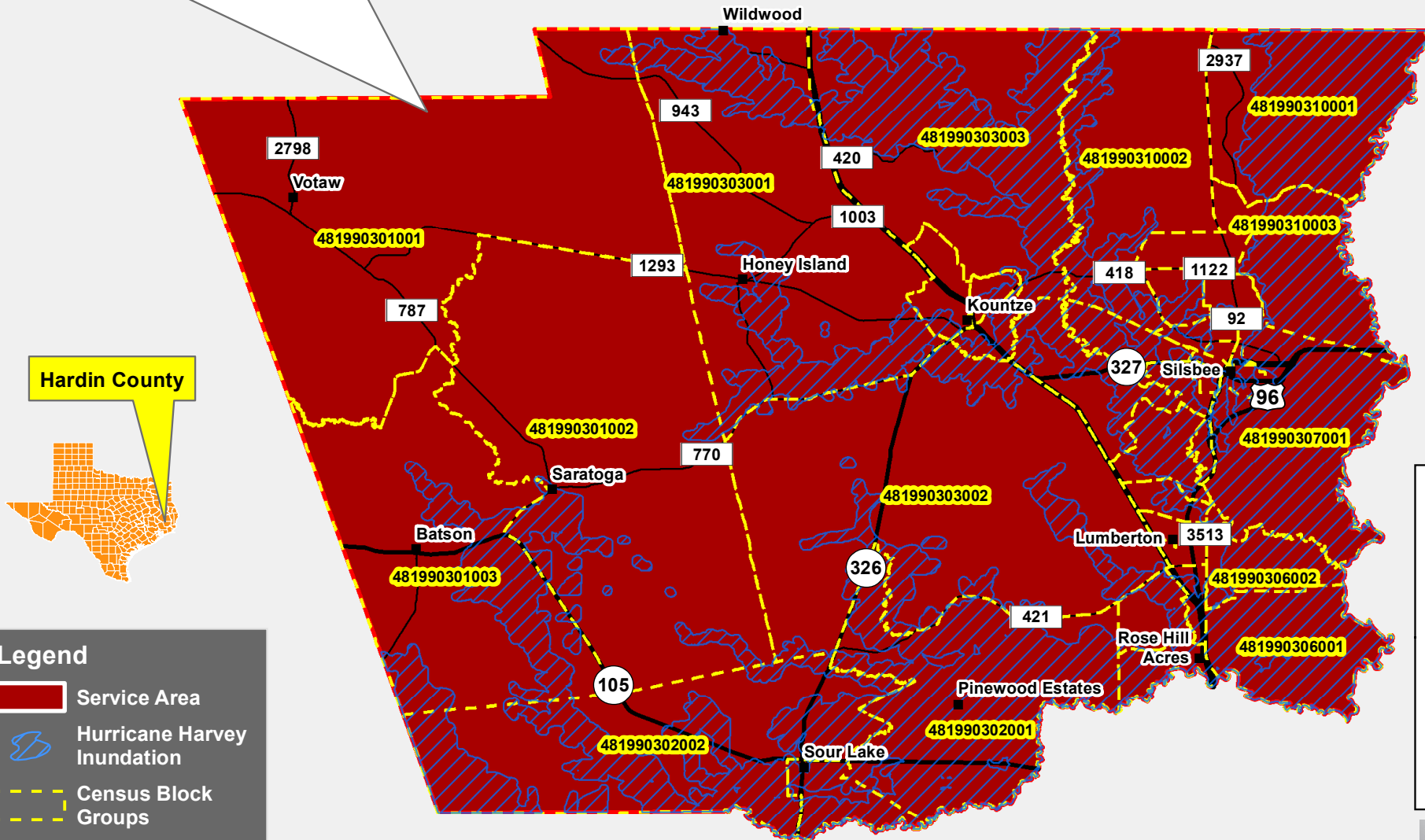


# PROJECT BENEFICIARY SERVICE AREA MAP

## URGENT NEED FIRE PROTECTION EQUIPMENT



- RED AREA INDICATES PROJECT BENEFICIARY SERVICE AREA (COUNTY-WIDE)
- BLUE AREA INDICATES HURRICANE HARVEY INUNDATION
- URGENT NEED FIRE PROTECTION EQUIPMENT PROJECT SERVICE AREA CONTAINS 28.9% RESIDENTS THAT MEET THE LOW-MODERATE INCOME (LMI) DEFINITION (LESS THAN 80% AREA MEDIAN INCOME)
- TOTAL POPULATION IN SERVICE AREA = 52880 PERSONS
- LMI POPULATION IN SERVICE AREA = 15260 PERSONS / 52880 = 28.9%



**DATA SOURCES:**

- Harvey CDBG-DR Infrastructure Application Guidebook, pg. 33
- 2015 American Community Survey (ACS), TIGER/Line Database, US Census Bureau
- HUD Notice CPD-19-02 Subject: Low- and Moderate-Income Summary Data Updates



0 2.5 5 10 Miles



DP05

## ACS DEMOGRAPHIC AND HOUSING ESTIMATES

2013-2017 American Community Survey 5-Year Estimates

Supporting documentation on code lists, subject definitions, data accuracy, and statistical testing can be found on the American Community Survey website in the Technical Documentation section.

Sample size and data quality measures (including coverage rates, allocation rates, and response rates) can be found on the American Community Survey website in the Methodology section.

Although the American Community Survey (ACS) produces population, demographic and housing unit estimates, it is the Census Bureau's Population Estimates Program that produces and disseminates the official estimates of the population for the nation, states, counties, cities, and towns and estimates of housing units for states and counties.

Subject	Census Tract 301, Hardin County, Texas				Census Tract 302, Hardin County, Texas
	Estimate	Margin of Error	Percent	Percent Margin of Error	Estimate
SEX AND AGE					
Total population	3,426	+/-658	3,426	(X)	5,756
Male	1,494	+/-329	43.6%	+/-4.5	2,712
Female	1,932	+/-396	56.4%	+/-4.5	3,044
Sex ratio (males per 100 females)	77.3	+/-14.3	(X)	(X)	89.1
Under 5 years	73	+/-67	2.1%	+/-1.9	217
5 to 9 years	226	+/-150	6.6%	+/-4.0	547
10 to 14 years	279	+/-134	8.1%	+/-3.6	413
15 to 19 years	347	+/-184	10.1%	+/-4.7	480
20 to 24 years	131	+/-89	3.8%	+/-2.5	229
25 to 34 years	496	+/-267	14.5%	+/-6.9	607
35 to 44 years	481	+/-189	14.0%	+/-5.2	636
45 to 54 years	476	+/-209	13.9%	+/-5.3	1,052
55 to 59 years	157	+/-67	4.6%	+/-2.0	398
60 to 64 years	239	+/-104	7.0%	+/-3.1	393
65 to 74 years	377	+/-174	11.0%	+/-5.2	564
75 to 84 years	138	+/-92	4.0%	+/-2.6	152
85 years and over	6	+/-11	0.2%	+/-0.3	68
Median age (years)	40.1	+/-5.6	(X)	(X)	42.0
Under 18 years	857	+/-253	25.0%	+/-3.7	1,467
16 years and over	2,735	+/-485	79.8%	+/-4.0	4,387
18 years and over	2,569	+/-443	75.0%	+/-3.7	4,289
21 years and over	2,480	+/-433	72.4%	+/-4.1	4,043
62 years and over	675	+/-222	19.7%	+/-6.3	1,020
65 years and over	521	+/-181	15.2%	+/-5.2	784
18 years and over	2,569	+/-443	2,569	(X)	4,289
Male	1,077	+/-205	41.9%	+/-4.9	1,987
Female	1,492	+/-305	58.1%	+/-4.9	2,302



Subject	Census Tract 301, Hardin County, Texas				Census Tract 302, Hardin County, Texas
	Estimate	Margin of Error	Percent	Percent Margin of Error	Estimate
Sex ratio (males per 100 females)	72.2	+/-14.8	(X)	(X)	86.3
65 years and over	521	+/-181	521	(X)	784
Male	241	+/-104	46.3%	+/-16.9	372
Female	280	+/-148	53.7%	+/-16.9	412
Sex ratio (males per 100 females)	86.1	+/-65.2	(X)	(X)	90.3
RACE					
Total population	3,426	+/-658	3,426	(X)	5,756
One race	3,408	+/-655	99.5%	+/-0.7	5,522
Two or more races	18	+/-23	0.5%	+/-0.7	234
One race	3,408	+/-655	99.5%	+/-0.7	5,522
White	3,402	+/-656	99.3%	+/-0.8	5,246
Black or African American	6	+/-11	0.2%	+/-0.3	171
American Indian and Alaska Native	0	+/-13	0.0%	+/-1.2	0
Cherokee tribal grouping	0	+/-13	0.0%	+/-1.2	0
Chippewa tribal grouping	0	+/-13	0.0%	+/-1.2	0
Navajo tribal grouping	0	+/-13	0.0%	+/-1.2	0
Sioux tribal grouping	0	+/-13	0.0%	+/-1.2	0
Asian	0	+/-13	0.0%	+/-1.2	44
Asian Indian	0	+/-13	0.0%	+/-1.2	0
Chinese	0	+/-13	0.0%	+/-1.2	0
Filipino	0	+/-13	0.0%	+/-1.2	5
Japanese	0	+/-13	0.0%	+/-1.2	0
Korean	0	+/-13	0.0%	+/-1.2	0
Vietnamese	0	+/-13	0.0%	+/-1.2	0
Other Asian	0	+/-13	0.0%	+/-1.2	39
Native Hawaiian and Other Pacific Islander	0	+/-13	0.0%	+/-1.2	0
Native Hawaiian	0	+/-13	0.0%	+/-1.2	0
Guamanian or Chamorro	0	+/-13	0.0%	+/-1.2	0
Samoan	0	+/-13	0.0%	+/-1.2	0
Other Pacific Islander	0	+/-13	0.0%	+/-1.2	0
Some other race	0	+/-13	0.0%	+/-1.2	61
Two or more races	18	+/-23	0.5%	+/-0.7	234
White and Black or African American	0	+/-13	0.0%	+/-1.2	0
White and American Indian and Alaska Native	18	+/-23	0.5%	+/-0.7	162
White and Asian	0	+/-13	0.0%	+/-1.2	0
Black or African American and American Indian and Alaska Native	0	+/-13	0.0%	+/-1.2	0
Race alone or in combination with one or more other races					
Total population	3,426	+/-658	3,426	(X)	5,756
White	3,420	+/-659	99.8%	+/-0.3	5,478
Black or African American	6	+/-11	0.2%	+/-0.3	171
American Indian and Alaska Native	18	+/-23	0.5%	+/-0.7	162
Asian	0	+/-13	0.0%	+/-1.2	57
Native Hawaiian and Other Pacific Islander	0	+/-13	0.0%	+/-1.2	0
Some other race	0	+/-13	0.0%	+/-1.2	133
HISPANIC OR LATINO AND RACE					
Total population	3,426	+/-658	3,426	(X)	5,756
Hispanic or Latino (of any race)	75	+/-109	2.2%	+/-3.1	249
Mexican	75	+/-109	2.2%	+/-3.1	132
Puerto Rican	0	+/-13	0.0%	+/-1.2	104
Cuban	0	+/-13	0.0%	+/-1.2	0
Other Hispanic or Latino	0	+/-13	0.0%	+/-1.2	13
Not Hispanic or Latino	3,351	+/-626	97.8%	+/-3.1	5,507

Subject	Census Tract 301, Hardin County, Texas				Census Tract 302, Hardin County, Texas
	Estimate	Margin of Error	Percent	Percent Margin of Error	Estimate
White alone	3,327	+/-626	97.1%	+/-3.4	5,185
Black or African American alone	6	+/-11	0.2%	+/-0.3	123
American Indian and Alaska Native alone	0	+/-13	0.0%	+/-1.2	0
Asian alone	0	+/-13	0.0%	+/-1.2	44
Native Hawaiian and Other Pacific Islander alone	0	+/-13	0.0%	+/-1.2	0
Some other race alone	0	+/-13	0.0%	+/-1.2	0
Two or more races	18	+/-23	0.5%	+/-0.7	155
Two races including Some other race	0	+/-13	0.0%	+/-1.2	0
Two races excluding Some other race, and Three or more races	18	+/-23	0.5%	+/-0.7	155
Total housing units	1,538	+/-113	(X)	(X)	2,356
CITIZEN, VOTING AGE POPULATION					
Citizen, 18 and over population	2,569	+/-443	2,569	(X)	4,260
Male	1,077	+/-205	41.9%	+/-4.9	1,968
Female	1,492	+/-305	58.1%	+/-4.9	2,292

Subject	Census Tract 302, Hardin County, Texas			Census Tract 303, Hardin County, Texas	
	Margin of Error	Percent	Percent Margin of Error	Estimate	Margin of Error
SEX AND AGE					
Total population	+/-613	5,756	(X)	11,793	+/-1,018
Male	+/-356	47.1%	+/-3.0	6,021	+/-589
Female	+/-343	52.9%	+/-3.0	5,772	+/-569
Sex ratio (males per 100 females)	+/-10.7	(X)	(X)	104.3	+/-9.8
Under 5 years	+/-125	3.8%	+/-2.1	1,279	+/-309
5 to 9 years	+/-179	9.5%	+/-2.8	647	+/-239
10 to 14 years	+/-139	7.2%	+/-2.3	709	+/-308
15 to 19 years	+/-179	8.3%	+/-2.9	909	+/-351
20 to 24 years	+/-128	4.0%	+/-2.0	797	+/-231
25 to 34 years	+/-250	10.5%	+/-3.7	1,413	+/-455
35 to 44 years	+/-130	11.0%	+/-2.4	1,670	+/-268
45 to 54 years	+/-213	18.3%	+/-2.9	1,755	+/-328
55 to 59 years	+/-106	6.9%	+/-1.9	567	+/-235
60 to 64 years	+/-130	6.8%	+/-2.4	585	+/-222
65 to 74 years	+/-126	9.8%	+/-2.3	840	+/-232
75 to 84 years	+/-56	2.6%	+/-1.0	472	+/-160
85 years and over	+/-46	1.2%	+/-0.8	150	+/-103
Median age (years)	+/-4.2	(X)	(X)	35.7	+/-3.8
Under 18 years	+/-238	25.5%	+/-2.5	3,274	+/-475
16 years and over	+/-467	76.2%	+/-2.6	9,002	+/-782
18 years and over	+/-444	74.5%	+/-2.5	8,519	+/-705
21 years and over	+/-422	70.2%	+/-2.9	7,962	+/-659
62 years and over	+/-158	17.7%	+/-3.1	1,880	+/-339
65 years and over	+/-123	13.6%	+/-2.4	1,462	+/-248
18 years and over	+/-444	4,289	(X)	8,519	+/-705
Male	+/-267	46.3%	+/-3.6	4,281	+/-417
Female	+/-274	53.7%	+/-3.6	4,238	+/-398
Sex ratio (males per 100 females)	+/-12.6	(X)	(X)	101.0	+/-9.7
65 years and over	+/-123	784	(X)	1,462	+/-248
Male	+/-76	47.4%	+/-8.6	674	+/-161
Female	+/-104	52.6%	+/-8.6	788	+/-167
Sex ratio (males per 100 females)	+/-33.0	(X)	(X)	85.5	+/-25.4
RACE					
Total population	+/-613	5,756	(X)	11,793	+/-1,018
One race	+/-601	95.9%	+/-2.6	11,695	+/-1,024
Two or more races	+/-153	4.1%	+/-2.6	98	+/-111
One race	+/-601	95.9%	+/-2.6	11,695	+/-1,024
White	+/-595	91.1%	+/-4.1	11,195	+/-1,025
Black or African American	+/-118	3.0%	+/-2.0	462	+/-436
American Indian and Alaska Native	+/-19	0.0%	+/-0.7	13	+/-31
Cherokee tribal grouping	+/-19	0.0%	+/-0.7	13	+/-31
Chippewa tribal grouping	+/-19	0.0%	+/-0.7	0	+/-21
Navajo tribal grouping	+/-19	0.0%	+/-0.7	0	+/-21
Sioux tribal grouping	+/-19	0.0%	+/-0.7	0	+/-21
Asian	+/-44	0.8%	+/-0.8	0	+/-21
Asian Indian	+/-19	0.0%	+/-0.7	0	+/-21
Chinese	+/-19	0.0%	+/-0.7	0	+/-21
Filipino	+/-11	0.1%	+/-0.2	0	+/-21
Japanese	+/-19	0.0%	+/-0.7	0	+/-21
Korean	+/-19	0.0%	+/-0.7	0	+/-21

Subject	Census Tract 302, Hardin County, Texas			Census Tract 303, Hardin County, Texas	
	Margin of Error	Percent	Percent Margin of Error	Estimate	Margin of Error
Vietnamese	+/-19	0.0%	+/-0.7	0	+/-21
Other Asian	+/-42	0.7%	+/-0.7	0	+/-21
Native Hawaiian and Other Pacific Islander	+/-19	0.0%	+/-0.7	25	+/-47
Native Hawaiian	+/-19	0.0%	+/-0.7	0	+/-21
Guamanian or Chamorro	+/-19	0.0%	+/-0.7	25	+/-47
Samoan	+/-19	0.0%	+/-0.7	0	+/-21
Other Pacific Islander	+/-19	0.0%	+/-0.7	0	+/-21
Some other race	+/-64	1.1%	+/-1.1	0	+/-21
Two or more races	+/-153	4.1%	+/-2.6	98	+/-111
White and Black or African American	+/-19	0.0%	+/-0.7	25	+/-37
White and American Indian and Alaska Native	+/-118	2.8%	+/-2.1	0	+/-21
White and Asian	+/-19	0.0%	+/-0.7	73	+/-106
Black or African American and American Indian and Alaska Native	+/-19	0.0%	+/-0.7	0	+/-21
Race alone or in combination with one or more other races					
Total population	+/-613	5,756	(X)	11,793	+/-1,018
White	+/-600	95.2%	+/-2.8	11,293	+/-1,010
Black or African American	+/-118	3.0%	+/-2.0	487	+/-456
American Indian and Alaska Native	+/-118	2.8%	+/-2.1	13	+/-31
Asian	+/-50	1.0%	+/-0.8	73	+/-106
Native Hawaiian and Other Pacific Islander	+/-19	0.0%	+/-0.7	25	+/-47
Some other race	+/-119	2.3%	+/-2.0	0	+/-21
HISPANIC OR LATINO AND RACE					
Total population	+/-613	5,756	(X)	11,793	+/-1,018
Hispanic or Latino (of any race)	+/-201	4.3%	+/-3.4	689	+/-452
Mexican	+/-118	2.3%	+/-2.0	689	+/-452
Puerto Rican	+/-124	1.8%	+/-2.2	0	+/-21
Cuban	+/-19	0.0%	+/-0.7	0	+/-21
Other Hispanic or Latino	+/-26	0.2%	+/-0.4	0	+/-21
Not Hispanic or Latino	+/-590	95.7%	+/-3.4	11,104	+/-943
White alone	+/-598	90.1%	+/-4.5	10,506	+/-946
Black or African American alone	+/-82	2.1%	+/-1.4	462	+/-436
American Indian and Alaska Native alone	+/-19	0.0%	+/-0.7	13	+/-31
Asian alone	+/-44	0.8%	+/-0.8	0	+/-21
Native Hawaiian and Other Pacific Islander alone	+/-19	0.0%	+/-0.7	25	+/-47
Some other race alone	+/-19	0.0%	+/-0.7	0	+/-21
Two or more races	+/-118	2.7%	+/-2.0	98	+/-111
Two races including Some other race	+/-19	0.0%	+/-0.7	0	+/-21
Two races excluding Some other race, and Three or more races	+/-118	2.7%	+/-2.0	98	+/-111
Total housing units	+/-152	(X)	(X)	4,864	+/-208
CITIZEN, VOTING AGE POPULATION					
Citizen, 18 and over population	+/-435	4,260	(X)	8,318	+/-758
Male	+/-260	46.2%	+/-3.6	4,096	+/-460
Female	+/-273	53.8%	+/-3.6	4,222	+/-399

Subject	Census Tract 303, Hardin County, Texas		Census Tract 304, Hardin County, Texas		
	Percent	Percent Margin of Error	Estimate	Margin of Error	Percent
SEX AND AGE					
Total population	11,793	(X)	2,291	+/-369	2,291
Male	51.1%	+/-2.3	1,170	+/-231	51.1%
Female	48.9%	+/-2.3	1,121	+/-190	48.9%
Sex ratio (males per 100 females)	(X)	(X)	104.4	+/-18.8	(X)
Under 5 years	10.8%	+/-2.3	138	+/-74	6.0%
5 to 9 years	5.5%	+/-2.0	111	+/-44	4.8%
10 to 14 years	6.0%	+/-2.5	125	+/-49	5.5%
15 to 19 years	7.7%	+/-2.9	126	+/-55	5.5%
20 to 24 years	6.8%	+/-1.9	168	+/-82	7.3%
25 to 34 years	12.0%	+/-3.5	462	+/-147	20.2%
35 to 44 years	14.2%	+/-1.8	232	+/-86	10.1%
45 to 54 years	14.9%	+/-2.8	216	+/-72	9.4%
55 to 59 years	4.8%	+/-2.1	206	+/-63	9.0%
60 to 64 years	5.0%	+/-1.8	91	+/-49	4.0%
65 to 74 years	7.1%	+/-1.9	225	+/-72	9.8%
75 to 84 years	4.0%	+/-1.4	133	+/-71	5.8%
85 years and over	1.3%	+/-0.9	58	+/-38	2.5%
Median age (years)	(X)	(X)	35.5	+/-6.6	(X)
Under 18 years	27.8%	+/-2.6	466	+/-140	20.3%
16 years and over	76.3%	+/-2.7	1,881	+/-299	82.1%
18 years and over	72.2%	+/-2.6	1,825	+/-287	79.7%
21 years and over	67.5%	+/-2.9	1,767	+/-280	77.1%
62 years and over	15.9%	+/-2.9	451	+/-93	19.7%
65 years and over	12.4%	+/-2.2	416	+/-88	18.2%
18 years and over	8,519	(X)	1,825	+/-287	1,825
Male	50.3%	+/-2.4	873	+/-180	47.8%
Female	49.7%	+/-2.4	952	+/-155	52.2%
Sex ratio (males per 100 females)	(X)	(X)	91.7	+/-18.2	(X)
65 years and over	1,462	(X)	416	+/-88	416
Male	46.1%	+/-7.4	157	+/-54	37.7%
Female	53.9%	+/-7.4	259	+/-67	62.3%
Sex ratio (males per 100 females)	(X)	(X)	60.6	+/-26.1	(X)
RACE					
Total population	11,793	(X)	2,291	+/-369	2,291
One race	99.2%	+/-0.9	2,259	+/-368	98.6%
Two or more races	0.8%	+/-0.9	32	+/-26	1.4%
One race	99.2%	+/-0.9	2,259	+/-368	98.6%
White	94.9%	+/-4.0	1,927	+/-330	84.1%
Black or African American	3.9%	+/-3.7	309	+/-153	13.5%
American Indian and Alaska Native	0.1%	+/-0.3	0	+/-13	0.0%
Cherokee tribal grouping	0.1%	+/-0.3	0	+/-13	0.0%
Chippewa tribal grouping	0.0%	+/-0.3	0	+/-13	0.0%
Navajo tribal grouping	0.0%	+/-0.3	0	+/-13	0.0%
Sioux tribal grouping	0.0%	+/-0.3	0	+/-13	0.0%
Asian	0.0%	+/-0.3	23	+/-35	1.0%
Asian Indian	0.0%	+/-0.3	0	+/-13	0.0%
Chinese	0.0%	+/-0.3	0	+/-13	0.0%
Filipino	0.0%	+/-0.3	23	+/-35	1.0%
Japanese	0.0%	+/-0.3	0	+/-13	0.0%
Korean	0.0%	+/-0.3	0	+/-13	0.0%

Subject	Census Tract 303, Hardin County, Texas		Census Tract 304, Hardin County, Texas		
	Percent	Percent Margin of Error	Estimate	Margin of Error	Percent
Vietnamese	0.0%	+/-0.3	0	+/-13	0.0%
Other Asian	0.0%	+/-0.3	0	+/-13	0.0%
Native Hawaiian and Other Pacific Islander	0.2%	+/-0.4	0	+/-13	0.0%
Native Hawaiian	0.0%	+/-0.3	0	+/-13	0.0%
Guamanian or Chamorro	0.2%	+/-0.4	0	+/-13	0.0%
Samoan	0.0%	+/-0.3	0	+/-13	0.0%
Other Pacific Islander	0.0%	+/-0.3	0	+/-13	0.0%
Some other race	0.0%	+/-0.3	0	+/-13	0.0%
Two or more races	0.8%	+/-0.9	32	+/-26	1.4%
White and Black or African American	0.2%	+/-0.3	27	+/-25	1.2%
White and American Indian and Alaska Native	0.0%	+/-0.3	5	+/-9	0.2%
White and Asian	0.6%	+/-0.9	0	+/-13	0.0%
Black or African American and American Indian and Alaska Native	0.0%	+/-0.3	0	+/-13	0.0%
Race alone or in combination with one or more other races					
Total population	11,793	(X)	2,291	+/-369	2,291
White	95.8%	+/-3.7	1,959	+/-328	85.5%
Black or African American	4.1%	+/-3.8	336	+/-160	14.7%
American Indian and Alaska Native	0.1%	+/-0.3	5	+/-9	0.2%
Asian	0.6%	+/-0.9	23	+/-35	1.0%
Native Hawaiian and Other Pacific Islander	0.2%	+/-0.4	0	+/-13	0.0%
Some other race	0.0%	+/-0.3	0	+/-13	0.0%
HISPANIC OR LATINO AND RACE					
Total population	11,793	(X)	2,291	+/-369	2,291
Hispanic or Latino (of any race)	5.8%	+/-3.7	330	+/-182	14.4%
Mexican	5.8%	+/-3.7	330	+/-182	14.4%
Puerto Rican	0.0%	+/-0.3	0	+/-13	0.0%
Cuban	0.0%	+/-0.3	0	+/-13	0.0%
Other Hispanic or Latino	0.0%	+/-0.3	0	+/-13	0.0%
Not Hispanic or Latino	94.2%	+/-3.7	1,961	+/-292	85.6%
White alone	89.1%	+/-5.2	1,597	+/-242	69.7%
Black or African American alone	3.9%	+/-3.7	309	+/-153	13.5%
American Indian and Alaska Native alone	0.1%	+/-0.3	0	+/-13	0.0%
Asian alone	0.0%	+/-0.3	23	+/-35	1.0%
Native Hawaiian and Other Pacific Islander alone	0.2%	+/-0.4	0	+/-13	0.0%
Some other race alone	0.0%	+/-0.3	0	+/-13	0.0%
Two or more races	0.8%	+/-0.9	32	+/-26	1.4%
Two races including Some other race	0.0%	+/-0.3	0	+/-13	0.0%
Two races excluding Some other race, and Three or more races	0.8%	+/-0.9	32	+/-26	1.4%
Total housing units	(X)	(X)	973	+/-93	(X)
CITIZEN, VOTING AGE POPULATION					
Citizen, 18 and over population	8,318	(X)	1,650	+/-255	1,650
Male	49.2%	+/-2.5	741	+/-150	44.9%
Female	50.8%	+/-2.5	909	+/-149	55.1%

Subject	Census Tract 304, Hardin County, Texas Percent Margin of Error	Census Tract 305.01, Hardin County, Texas			
		Estimate	Margin of Error	Percent	Percent Margin of Error
SEX AND AGE					
Total population	(X)	4,616	+/-406	4,616	(X)
Male	+/-4.5	2,450	+/-279	53.1%	+/-3.7
Female	+/-4.5	2,166	+/-254	46.9%	+/-3.7
Sex ratio (males per 100 females)	(X)	113.1	+/-17.1	(X)	(X)
Under 5 years	+/-2.7	251	+/-132	5.4%	+/-2.8
5 to 9 years	+/-1.7	450	+/-140	9.7%	+/-2.8
10 to 14 years	+/-2.0	360	+/-168	7.8%	+/-3.5
15 to 19 years	+/-2.0	225	+/-105	4.9%	+/-2.3
20 to 24 years	+/-3.1	207	+/-96	4.5%	+/-2.0
25 to 34 years	+/-5.1	551	+/-212	11.9%	+/-4.4
35 to 44 years	+/-3.2	611	+/-192	13.2%	+/-3.8
45 to 54 years	+/-2.8	654	+/-204	14.2%	+/-4.0
55 to 59 years	+/-3.1	339	+/-101	7.3%	+/-2.3
60 to 64 years	+/-2.1	393	+/-137	8.5%	+/-3.0
65 to 74 years	+/-3.1	416	+/-121	9.0%	+/-2.8
75 to 84 years	+/-3.0	111	+/-58	2.4%	+/-1.3
85 years and over	+/-1.7	48	+/-36	1.0%	+/-0.8
Median age (years)	(X)	39.0	+/-5.9	(X)	(X)
Under 18 years	+/-4.3	1,191	+/-208	25.8%	+/-3.6
16 years and over	+/-3.8	3,506	+/-330	76.0%	+/-4.1
18 years and over	+/-4.3	3,425	+/-322	74.2%	+/-3.6
21 years and over	+/-4.7	3,272	+/-305	70.9%	+/-3.4
62 years and over	+/-3.9	770	+/-149	16.7%	+/-3.5
65 years and over	+/-3.8	575	+/-134	12.5%	+/-3.1
18 years and over	(X)	3,425	+/-322	3,425	(X)
Male	+/-4.9	1,812	+/-222	52.9%	+/-3.1
Female	+/-4.9	1,613	+/-161	47.1%	+/-3.1
Sex ratio (males per 100 females)	(X)	112.3	+/-13.8	(X)	(X)
65 years and over	(X)	575	+/-134	575	(X)
Male	+/-9.7	280	+/-74	48.7%	+/-6.6
Female	+/-9.7	295	+/-80	51.3%	+/-6.6
Sex ratio (males per 100 females)	(X)	94.9	+/-24.8	(X)	(X)
RACE					
Total population	(X)	4,616	+/-406	4,616	(X)
One race	+/-1.1	4,562	+/-400	98.8%	+/-1.5
Two or more races	+/-1.1	54	+/-71	1.2%	+/-1.5
One race	+/-1.1	4,562	+/-400	98.8%	+/-1.5
White	+/-6.2	4,427	+/-395	95.9%	+/-2.6
Black or African American	+/-6.0	48	+/-56	1.0%	+/-1.2
American Indian and Alaska Native	+/-1.7	38	+/-40	0.8%	+/-0.9
Cherokee tribal grouping	+/-1.7	30	+/-38	0.6%	+/-0.8
Chippewa tribal grouping	+/-1.7	0	+/-13	0.0%	+/-0.9
Navajo tribal grouping	+/-1.7	0	+/-13	0.0%	+/-0.9
Sioux tribal grouping	+/-1.7	0	+/-13	0.0%	+/-0.9
Asian	+/-1.5	49	+/-50	1.1%	+/-1.1
Asian Indian	+/-1.7	0	+/-13	0.0%	+/-0.9
Chinese	+/-1.7	0	+/-13	0.0%	+/-0.9
Filipino	+/-1.5	18	+/-30	0.4%	+/-0.6
Japanese	+/-1.7	0	+/-13	0.0%	+/-0.9
Korean	+/-1.7	0	+/-13	0.0%	+/-0.9



Subject	Census Tract 304, Hardin County, Texas Percent Margin of Error	Census Tract 305.01, Hardin County, Texas			
		Estimate	Margin of Error	Percent	Percent Margin of Error
Vietnamese	+/-1.7	0	+/-13	0.0%	+/-0.9
Other Asian	+/-1.7	31	+/-44	0.7%	+/-1.0
Native Hawaiian and Other Pacific Islander	+/-1.7	0	+/-13	0.0%	+/-0.9
Native Hawaiian	+/-1.7	0	+/-13	0.0%	+/-0.9
Guamanian or Chamorro	+/-1.7	0	+/-13	0.0%	+/-0.9
Samoan	+/-1.7	0	+/-13	0.0%	+/-0.9
Other Pacific Islander	+/-1.7	0	+/-13	0.0%	+/-0.9
Some other race	+/-1.7	0	+/-13	0.0%	+/-0.9
Two or more races	+/-1.1	54	+/-71	1.2%	+/-1.5
White and Black or African American	+/-1.1	0	+/-13	0.0%	+/-0.9
White and American Indian and Alaska Native	+/-0.4	0	+/-13	0.0%	+/-0.9
White and Asian	+/-1.7	54	+/-71	1.2%	+/-1.5
Black or African American and American Indian and Alaska Native	+/-1.7	0	+/-13	0.0%	+/-0.9
Race alone or in combination with one or more other races					
Total population	(X)	4,616	+/-406	4,616	(X)
White	+/-5.8	4,481	+/-397	97.1%	+/-1.7
Black or African American	+/-6.3	48	+/-56	1.0%	+/-1.2
American Indian and Alaska Native	+/-0.4	38	+/-40	0.8%	+/-0.9
Asian	+/-1.5	103	+/-103	2.2%	+/-2.2
Native Hawaiian and Other Pacific Islander	+/-1.7	0	+/-13	0.0%	+/-0.9
Some other race	+/-1.7	0	+/-13	0.0%	+/-0.9
HISPANIC OR LATINO AND RACE					
Total population	(X)	4,616	+/-406	4,616	(X)
Hispanic or Latino (of any race)	+/-6.7	40	+/-48	0.9%	+/-1.1
Mexican	+/-6.7	40	+/-48	0.9%	+/-1.1
Puerto Rican	+/-1.7	0	+/-13	0.0%	+/-0.9
Cuban	+/-1.7	0	+/-13	0.0%	+/-0.9
Other Hispanic or Latino	+/-1.7	0	+/-13	0.0%	+/-0.9
Not Hispanic or Latino	+/-6.7	4,576	+/-419	99.1%	+/-1.1
White alone	+/-7.6	4,387	+/-408	95.0%	+/-2.8
Black or African American alone	+/-6.0	48	+/-56	1.0%	+/-1.2
American Indian and Alaska Native alone	+/-1.7	38	+/-40	0.8%	+/-0.9
Asian alone	+/-1.5	49	+/-50	1.1%	+/-1.1
Native Hawaiian and Other Pacific Islander alone	+/-1.7	0	+/-13	0.0%	+/-0.9
Some other race alone	+/-1.7	0	+/-13	0.0%	+/-0.9
Two or more races	+/-1.1	54	+/-71	1.2%	+/-1.5
Two races including Some other race	+/-1.7	0	+/-13	0.0%	+/-0.9
Two races excluding Some other race, and Three or more races	+/-1.1	54	+/-71	1.2%	+/-1.5
Total housing units	(X)	1,793	+/-154	(X)	(X)
CITIZEN, VOTING AGE POPULATION					
Citizen, 18 and over population	(X)	3,394	+/-321	3,394	(X)
Male	+/-4.7	1,781	+/-216	52.5%	+/-2.9
Female	+/-4.7	1,613	+/-161	47.5%	+/-2.9

Subject	Census Tract 305.02, Hardin County, Texas				Census Tract 306, Hardin County, Texas
	Estimate	Margin of Error	Percent	Percent Margin of Error	Estimate
SEX AND AGE					
Total population	8,036	+/-529	8,036	(X)	4,036
Male	3,932	+/-338	48.9%	+/-3.0	2,026
Female	4,104	+/-380	51.1%	+/-3.0	2,010
Sex ratio (males per 100 females)	95.8	+/-11.6	(X)	(X)	100.8
Under 5 years	473	+/-220	5.9%	+/-2.6	291
5 to 9 years	491	+/-161	6.1%	+/-2.0	278
10 to 14 years	564	+/-180	7.0%	+/-2.2	315
15 to 19 years	460	+/-210	5.7%	+/-2.6	284
20 to 24 years	598	+/-256	7.4%	+/-3.0	300
25 to 34 years	724	+/-251	9.0%	+/-3.0	598
35 to 44 years	1,076	+/-224	13.4%	+/-2.8	393
45 to 54 years	931	+/-253	11.6%	+/-3.0	462
55 to 59 years	576	+/-188	7.2%	+/-2.4	272
60 to 64 years	556	+/-163	6.9%	+/-2.1	142
65 to 74 years	676	+/-174	8.4%	+/-2.1	548
75 to 84 years	621	+/-167	7.7%	+/-2.2	145
85 years and over	290	+/-152	3.6%	+/-1.9	8
Median age (years)	41.9	+/-1.7	(X)	(X)	34.5
Under 18 years	1,770	+/-303	22.0%	+/-3.1	1,079
16 years and over	6,462	+/-433	80.4%	+/-3.4	3,071
18 years and over	6,266	+/-415	78.0%	+/-3.1	2,957
21 years and over	5,892	+/-385	73.3%	+/-3.5	2,817
62 years and over	1,887	+/-270	23.5%	+/-3.4	748
65 years and over	1,587	+/-251	19.7%	+/-3.1	701
18 years and over	6,266	+/-415	6,266	(X)	2,957
Male	3,052	+/-265	48.7%	+/-2.9	1,508
Female	3,214	+/-284	51.3%	+/-2.9	1,449
Sex ratio (males per 100 females)	95.0	+/-10.8	(X)	(X)	104.1
65 years and over	1,587	+/-251	1,587	(X)	701
Male	719	+/-164	45.3%	+/-6.5	342
Female	868	+/-158	54.7%	+/-6.5	359
Sex ratio (males per 100 females)	82.8	+/-21.3	(X)	(X)	95.3
RACE					
Total population	8,036	+/-529	8,036	(X)	4,036
One race	7,976	+/-529	99.3%	+/-0.8	4,010
Two or more races	60	+/-65	0.7%	+/-0.8	26
One race	7,976	+/-529	99.3%	+/-0.8	4,010
White	7,907	+/-530	98.4%	+/-1.2	4,002
Black or African American	0	+/-19	0.0%	+/-0.5	0
American Indian and Alaska Native	69	+/-44	0.9%	+/-0.5	8
Cherokee tribal grouping	24	+/-32	0.3%	+/-0.4	8
Chippewa tribal grouping	0	+/-19	0.0%	+/-0.5	0
Navajo tribal grouping	0	+/-19	0.0%	+/-0.5	0
Sioux tribal grouping	0	+/-19	0.0%	+/-0.5	0
Asian	0	+/-19	0.0%	+/-0.5	0
Asian Indian	0	+/-19	0.0%	+/-0.5	0
Chinese	0	+/-19	0.0%	+/-0.5	0
Filipino	0	+/-19	0.0%	+/-0.5	0
Japanese	0	+/-19	0.0%	+/-0.5	0
Korean	0	+/-19	0.0%	+/-0.5	0

Subject	Census Tract 305.02, Hardin County, Texas				Census Tract 306, Hardin County, Texas
	Estimate	Margin of Error	Percent	Percent Margin of Error	Estimate
Vietnamese	0	+/-19	0.0%	+/-0.5	0
Other Asian	0	+/-19	0.0%	+/-0.5	0
Native Hawaiian and Other Pacific Islander	0	+/-19	0.0%	+/-0.5	0
Native Hawaiian	0	+/-19	0.0%	+/-0.5	0
Guamanian or Chamorro	0	+/-19	0.0%	+/-0.5	0
Samoan	0	+/-19	0.0%	+/-0.5	0
Other Pacific Islander	0	+/-19	0.0%	+/-0.5	0
Some other race	0	+/-19	0.0%	+/-0.5	0
Two or more races	60	+/-65	0.7%	+/-0.8	26
White and Black or African American	0	+/-19	0.0%	+/-0.5	26
White and American Indian and Alaska Native	60	+/-65	0.7%	+/-0.8	0
White and Asian	0	+/-19	0.0%	+/-0.5	0
Black or African American and American Indian and Alaska Native	0	+/-19	0.0%	+/-0.5	0
Race alone or in combination with one or more other races					
Total population	8,036	+/-529	8,036	(X)	4,036
White	7,967	+/-527	99.1%	+/-0.5	4,028
Black or African American	0	+/-19	0.0%	+/-0.5	26
American Indian and Alaska Native	129	+/-99	1.6%	+/-1.2	8
Asian	0	+/-19	0.0%	+/-0.5	0
Native Hawaiian and Other Pacific Islander	0	+/-19	0.0%	+/-0.5	0
Some other race	0	+/-19	0.0%	+/-0.5	0
HISPANIC OR LATINO AND RACE					
Total population	8,036	+/-529	8,036	(X)	4,036
Hispanic or Latino (of any race)	334	+/-196	4.2%	+/-2.3	247
Mexican	263	+/-185	3.3%	+/-2.2	247
Puerto Rican	28	+/-44	0.3%	+/-0.5	0
Cuban	0	+/-19	0.0%	+/-0.5	0
Other Hispanic or Latino	43	+/-69	0.5%	+/-0.9	0
Not Hispanic or Latino	7,702	+/-483	95.8%	+/-2.3	3,789
White alone	7,573	+/-482	94.2%	+/-2.6	3,755
Black or African American alone	0	+/-19	0.0%	+/-0.5	0
American Indian and Alaska Native alone	69	+/-44	0.9%	+/-0.5	8
Asian alone	0	+/-19	0.0%	+/-0.5	0
Native Hawaiian and Other Pacific Islander alone	0	+/-19	0.0%	+/-0.5	0
Some other race alone	0	+/-19	0.0%	+/-0.5	0
Two or more races	60	+/-65	0.7%	+/-0.8	26
Two races including Some other race	0	+/-19	0.0%	+/-0.5	0
Two races excluding Some other race, and Three or more races	60	+/-65	0.7%	+/-0.8	26
Total housing units	3,485	+/-175	(X)	(X)	1,514
CITIZEN, VOTING AGE POPULATION					
Citizen, 18 and over population	6,240	+/-417	6,240	(X)	2,926
Male	3,052	+/-265	48.9%	+/-2.9	1,481
Female	3,188	+/-289	51.1%	+/-2.9	1,445

Subject	Census Tract 306, Hardin County, Texas			Census Tract 307, Hardin County, Texas	
	Margin of Error	Percent	Percent Margin of Error	Estimate	Margin of Error
SEX AND AGE					
Total population	+/-420	4,036	(X)	4,242	+/-415
Male	+/-290	50.2%	+/-3.6	1,855	+/-275
Female	+/-216	49.8%	+/-3.6	2,387	+/-304
Sex ratio (males per 100 females)	+/-14.5	(X)	(X)	77.7	+/-15.3
Under 5 years	+/-129	7.2%	+/-3.0	401	+/-118
5 to 9 years	+/-83	6.9%	+/-2.1	290	+/-118
10 to 14 years	+/-108	7.8%	+/-2.5	341	+/-159
15 to 19 years	+/-99	7.0%	+/-2.4	201	+/-106
20 to 24 years	+/-134	7.4%	+/-3.2	155	+/-74
25 to 34 years	+/-214	14.8%	+/-4.5	596	+/-188
35 to 44 years	+/-104	9.7%	+/-2.5	385	+/-121
45 to 54 years	+/-132	11.4%	+/-3.0	490	+/-175
55 to 59 years	+/-100	6.7%	+/-2.6	337	+/-106
60 to 64 years	+/-81	3.5%	+/-1.9	269	+/-118
65 to 74 years	+/-119	13.6%	+/-2.9	441	+/-95
75 to 84 years	+/-64	3.6%	+/-1.6	182	+/-72
85 years and over	+/-13	0.2%	+/-0.3	154	+/-75
Median age (years)	+/-3.3	(X)	(X)	41.5	+/-8.6
Under 18 years	+/-174	26.7%	+/-3.2	1,146	+/-237
16 years and over	+/-328	76.1%	+/-3.4	3,167	+/-279
18 years and over	+/-328	73.3%	+/-3.2	3,096	+/-270
21 years and over	+/-315	69.8%	+/-3.6	2,999	+/-262
62 years and over	+/-133	18.5%	+/-3.3	977	+/-184
65 years and over	+/-129	17.4%	+/-3.3	777	+/-143
18 years and over	+/-328	2,957	(X)	3,096	+/-270
Male	+/-238	51.0%	+/-3.7	1,345	+/-172
Female	+/-147	49.0%	+/-3.7	1,751	+/-176
Sex ratio (males per 100 females)	+/-15.4	(X)	(X)	76.8	+/-11.2
65 years and over	+/-129	701	(X)	777	+/-143
Male	+/-87	48.8%	+/-7.5	301	+/-84
Female	+/-79	51.2%	+/-7.5	476	+/-99
Sex ratio (males per 100 females)	+/-28.4	(X)	(X)	63.2	+/-19.3
RACE					
Total population	+/-420	4,036	(X)	4,242	+/-415
One race	+/-426	99.4%	+/-0.9	4,147	+/-420
Two or more races	+/-37	0.6%	+/-0.9	95	+/-80
One race	+/-426	99.4%	+/-0.9	4,147	+/-420
White	+/-428	99.2%	+/-1.0	3,441	+/-424
Black or African American	+/-13	0.0%	+/-1.0	692	+/-235
American Indian and Alaska Native	+/-13	0.2%	+/-0.3	0	+/-13
Cherokee tribal grouping	+/-13	0.2%	+/-0.3	0	+/-13
Chippewa tribal grouping	+/-13	0.0%	+/-1.0	0	+/-13
Navajo tribal grouping	+/-13	0.0%	+/-1.0	0	+/-13
Sioux tribal grouping	+/-13	0.0%	+/-1.0	0	+/-13
Asian	+/-13	0.0%	+/-1.0	0	+/-13
Asian Indian	+/-13	0.0%	+/-1.0	0	+/-13
Chinese	+/-13	0.0%	+/-1.0	0	+/-13
Filipino	+/-13	0.0%	+/-1.0	0	+/-13
Japanese	+/-13	0.0%	+/-1.0	0	+/-13
Korean	+/-13	0.0%	+/-1.0	0	+/-13

Subject	Census Tract 306, Hardin County, Texas			Census Tract 307, Hardin County, Texas	
	Margin of Error	Percent	Percent Margin of Error	Estimate	Margin of Error
Vietnamese	+/-13	0.0%	+/-1.0	0	+/-13
Other Asian	+/-13	0.0%	+/-1.0	0	+/-13
Native Hawaiian and Other Pacific Islander	+/-13	0.0%	+/-1.0	0	+/-13
Native Hawaiian	+/-13	0.0%	+/-1.0	0	+/-13
Guamanian or Chamorro	+/-13	0.0%	+/-1.0	0	+/-13
Samoan	+/-13	0.0%	+/-1.0	0	+/-13
Other Pacific Islander	+/-13	0.0%	+/-1.0	0	+/-13
Some other race	+/-13	0.0%	+/-1.0	14	+/-21
Two or more races	+/-37	0.6%	+/-0.9	95	+/-80
White and Black or African American	+/-37	0.6%	+/-0.9	35	+/-59
White and American Indian and Alaska Native	+/-13	0.0%	+/-1.0	36	+/-37
White and Asian	+/-13	0.0%	+/-1.0	16	+/-29
Black or African American and American Indian and Alaska Native	+/-13	0.0%	+/-1.0	0	+/-13
Race alone or in combination with one or more other races					
Total population	+/-420	4,036	(X)	4,242	+/-415
White	+/-423	99.8%	+/-0.3	3,536	+/-419
Black or African American	+/-37	0.6%	+/-0.9	735	+/-238
American Indian and Alaska Native	+/-13	0.2%	+/-0.3	44	+/-39
Asian	+/-13	0.0%	+/-1.0	16	+/-29
Native Hawaiian and Other Pacific Islander	+/-13	0.0%	+/-1.0	0	+/-13
Some other race	+/-13	0.0%	+/-1.0	14	+/-21
HISPANIC OR LATINO AND RACE					
Total population	+/-420	4,036	(X)	4,242	+/-415
Hispanic or Latino (of any race)	+/-160	6.1%	+/-3.8	623	+/-319
Mexican	+/-160	6.1%	+/-3.8	585	+/-328
Puerto Rican	+/-13	0.0%	+/-1.0	22	+/-35
Cuban	+/-13	0.0%	+/-1.0	0	+/-13
Other Hispanic or Latino	+/-13	0.0%	+/-1.0	16	+/-24
Not Hispanic or Latino	+/-407	93.9%	+/-3.8	3,619	+/-435
White alone	+/-412	93.0%	+/-3.8	2,848	+/-402
Black or African American alone	+/-13	0.0%	+/-1.0	692	+/-235
American Indian and Alaska Native alone	+/-13	0.2%	+/-0.3	0	+/-13
Asian alone	+/-13	0.0%	+/-1.0	0	+/-13
Native Hawaiian and Other Pacific Islander alone	+/-13	0.0%	+/-1.0	0	+/-13
Some other race alone	+/-13	0.0%	+/-1.0	0	+/-13
Two or more races	+/-37	0.6%	+/-0.9	79	+/-75
Two races including Some other race	+/-13	0.0%	+/-1.0	0	+/-13
Two races excluding Some other race, and Three or more races	+/-37	0.6%	+/-0.9	79	+/-75
Total housing units	+/-94	(X)	(X)	1,855	+/-142
CITIZEN, VOTING AGE POPULATION					
Citizen, 18 and over population	+/-324	2,926	(X)	3,036	+/-275
Male	+/-233	50.6%	+/-3.7	1,337	+/-171
Female	+/-147	49.4%	+/-3.7	1,699	+/-186

Subject	Census Tract 307, Hardin County, Texas		Census Tract 308, Hardin County, Texas		
	Percent	Percent Margin of Error	Estimate	Margin of Error	Percent
SEX AND AGE					
Total population	4,242	(X)	3,935	+/-414	3,935
Male	43.7%	+/-4.8	1,876	+/-222	47.7%
Female	56.3%	+/-4.8	2,059	+/-264	52.3%
Sex ratio (males per 100 females)	(X)	(X)	91.1	+/-12.0	(X)
Under 5 years	9.5%	+/-2.6	172	+/-95	4.4%
5 to 9 years	6.8%	+/-2.6	331	+/-167	8.4%
10 to 14 years	8.0%	+/-3.4	202	+/-89	5.1%
15 to 19 years	4.7%	+/-2.4	319	+/-143	8.1%
20 to 24 years	3.7%	+/-1.7	131	+/-83	3.3%
25 to 34 years	14.0%	+/-4.3	533	+/-182	13.5%
35 to 44 years	9.1%	+/-2.6	468	+/-146	11.9%
45 to 54 years	11.6%	+/-4.0	309	+/-126	7.9%
55 to 59 years	7.9%	+/-2.5	257	+/-100	6.5%
60 to 64 years	6.3%	+/-2.8	397	+/-106	10.1%
65 to 74 years	10.4%	+/-2.3	510	+/-114	13.0%
75 to 84 years	4.3%	+/-1.6	202	+/-90	5.1%
85 years and over	3.6%	+/-1.8	104	+/-50	2.6%
Median age (years)	(X)	(X)	38.6	+/-6.3	(X)
Under 18 years	27.0%	+/-3.9	888	+/-210	22.6%
16 years and over	74.7%	+/-3.8	3,102	+/-287	78.8%
18 years and over	73.0%	+/-3.9	3,047	+/-282	77.4%
21 years and over	70.7%	+/-3.8	2,911	+/-247	74.0%
62 years and over	23.0%	+/-4.3	1,020	+/-166	25.9%
65 years and over	18.3%	+/-3.3	816	+/-147	20.7%
18 years and over	3,096	(X)	3,047	+/-282	3,047
Male	43.4%	+/-3.6	1,382	+/-187	45.4%
Female	56.6%	+/-3.6	1,665	+/-201	54.6%
Sex ratio (males per 100 females)	(X)	(X)	83.0	+/-15.0	(X)
65 years and over	777	(X)	816	+/-147	816
Male	38.7%	+/-7.2	322	+/-94	39.5%
Female	61.3%	+/-7.2	494	+/-103	60.5%
Sex ratio (males per 100 females)	(X)	(X)	65.2	+/-22.8	(X)
RACE					
Total population	4,242	(X)	3,935	+/-414	3,935
One race	97.8%	+/-1.9	3,928	+/-413	99.8%
Two or more races	2.2%	+/-1.9	7	+/-13	0.2%
One race	97.8%	+/-1.9	3,928	+/-413	99.8%
White	81.1%	+/-5.6	2,424	+/-341	61.6%
Black or African American	16.3%	+/-5.4	1,491	+/-306	37.9%
American Indian and Alaska Native	0.0%	+/-0.9	0	+/-13	0.0%
Cherokee tribal grouping	0.0%	+/-0.9	0	+/-13	0.0%
Chippewa tribal grouping	0.0%	+/-0.9	0	+/-13	0.0%
Navajo tribal grouping	0.0%	+/-0.9	0	+/-13	0.0%
Sioux tribal grouping	0.0%	+/-0.9	0	+/-13	0.0%
Asian	0.0%	+/-0.9	13	+/-19	0.3%
Asian Indian	0.0%	+/-0.9	0	+/-13	0.0%
Chinese	0.0%	+/-0.9	0	+/-13	0.0%
Filipino	0.0%	+/-0.9	0	+/-13	0.0%
Japanese	0.0%	+/-0.9	0	+/-13	0.0%
Korean	0.0%	+/-0.9	0	+/-13	0.0%

Subject	Census Tract 307, Hardin County, Texas		Census Tract 308, Hardin County, Texas		
	Percent	Percent Margin of Error	Estimate	Margin of Error	Percent
Vietnamese	0.0%	+/-0.9	13	+/-19	0.3%
Other Asian	0.0%	+/-0.9	0	+/-13	0.0%
Native Hawaiian and Other Pacific Islander	0.0%	+/-0.9	0	+/-13	0.0%
Native Hawaiian	0.0%	+/-0.9	0	+/-13	0.0%
Guamanian or Chamorro	0.0%	+/-0.9	0	+/-13	0.0%
Samoan	0.0%	+/-0.9	0	+/-13	0.0%
Other Pacific Islander	0.0%	+/-0.9	0	+/-13	0.0%
Some other race	0.3%	+/-0.5	0	+/-13	0.0%
Two or more races	2.2%	+/-1.9	7	+/-13	0.2%
White and Black or African American	0.8%	+/-1.4	0	+/-13	0.0%
White and American Indian and Alaska Native	0.8%	+/-0.9	7	+/-13	0.2%
White and Asian	0.4%	+/-0.7	0	+/-13	0.0%
Black or African American and American Indian and Alaska Native	0.0%	+/-0.9	0	+/-13	0.0%
Race alone or in combination with one or more other races					
Total population	4,242	(X)	3,935	+/-414	3,935
White	83.4%	+/-5.4	2,431	+/-342	61.8%
Black or African American	17.3%	+/-5.4	1,491	+/-306	37.9%
American Indian and Alaska Native	1.0%	+/-0.9	7	+/-13	0.2%
Asian	0.4%	+/-0.7	13	+/-19	0.3%
Native Hawaiian and Other Pacific Islander	0.0%	+/-0.9	0	+/-13	0.0%
Some other race	0.3%	+/-0.5	0	+/-13	0.0%
HISPANIC OR LATINO AND RACE					
Total population	4,242	(X)	3,935	+/-414	3,935
Hispanic or Latino (of any race)	14.7%	+/-7.2	197	+/-127	5.0%
Mexican	13.8%	+/-7.4	178	+/-118	4.5%
Puerto Rican	0.5%	+/-0.8	0	+/-13	0.0%
Cuban	0.0%	+/-0.9	0	+/-13	0.0%
Other Hispanic or Latino	0.4%	+/-0.6	19	+/-30	0.5%
Not Hispanic or Latino	85.3%	+/-7.2	3,738	+/-399	95.0%
White alone	67.1%	+/-7.6	2,227	+/-335	56.6%
Black or African American alone	16.3%	+/-5.4	1,491	+/-306	37.9%
American Indian and Alaska Native alone	0.0%	+/-0.9	0	+/-13	0.0%
Asian alone	0.0%	+/-0.9	13	+/-19	0.3%
Native Hawaiian and Other Pacific Islander alone	0.0%	+/-0.9	0	+/-13	0.0%
Some other race alone	0.0%	+/-0.9	0	+/-13	0.0%
Two or more races	1.9%	+/-1.8	7	+/-13	0.2%
Two races including Some other race	0.0%	+/-0.9	0	+/-13	0.0%
Two races excluding Some other race, and Three or more races	1.9%	+/-1.8	7	+/-13	0.2%
Total housing units	(X)	(X)	2,138	+/-141	(X)
CITIZEN, VOTING AGE POPULATION					
Citizen, 18 and over population	3,036	(X)	3,047	+/-282	3,047
Male	44.0%	+/-3.7	1,382	+/-187	45.4%
Female	56.0%	+/-3.7	1,665	+/-201	54.6%



Subject	Census Tract 308, Hardin County, Texas Percent Margin of Error	Census Tract 309, Hardin County, Texas			
		Estimate	Margin of Error	Percent	Percent Margin of Error
SEX AND AGE					
Total population	(X)	4,068	+/-378	4,068	(X)
Male	+/-3.2	1,975	+/-241	48.5%	+/-4.6
Female	+/-3.2	2,093	+/-293	51.5%	+/-4.6
Sex ratio (males per 100 females)	(X)	94.4	+/-17.7	(X)	(X)
Under 5 years	+/-2.3	248	+/-166	6.1%	+/-3.9
5 to 9 years	+/-3.9	305	+/-143	7.5%	+/-3.3
10 to 14 years	+/-2.2	236	+/-93	5.8%	+/-2.1
15 to 19 years	+/-3.2	198	+/-86	4.9%	+/-2.1
20 to 24 years	+/-2.1	320	+/-125	7.9%	+/-3.1
25 to 34 years	+/-4.1	399	+/-191	9.8%	+/-4.4
35 to 44 years	+/-3.7	603	+/-152	14.8%	+/-3.5
45 to 54 years	+/-3.3	481	+/-133	11.8%	+/-3.3
55 to 59 years	+/-2.5	373	+/-116	9.2%	+/-2.8
60 to 64 years	+/-2.7	268	+/-107	6.6%	+/-2.8
65 to 74 years	+/-3.2	407	+/-112	10.0%	+/-2.7
75 to 84 years	+/-2.4	165	+/-90	4.1%	+/-2.2
85 years and over	+/-1.3	65	+/-62	1.6%	+/-1.5
Median age (years)	(X)	40.4	+/-4.6	(X)	(X)
Under 18 years	+/-3.8	936	+/-241	23.0%	+/-4.7
16 years and over	+/-4.3	3,242	+/-286	79.7%	+/-4.7
18 years and over	+/-3.8	3,132	+/-277	77.0%	+/-4.7
21 years and over	+/-5.1	3,043	+/-266	74.8%	+/-4.6
62 years and over	+/-5.0	790	+/-150	19.4%	+/-3.7
65 years and over	+/-4.4	637	+/-138	15.7%	+/-3.2
18 years and over	(X)	3,132	+/-277	3,132	(X)
Male	+/-4.4	1,560	+/-206	49.8%	+/-4.0
Female	+/-4.4	1,572	+/-169	50.2%	+/-4.0
Sex ratio (males per 100 females)	(X)	99.2	+/-16.2	(X)	(X)
65 years and over	(X)	637	+/-138	637	(X)
Male	+/-8.2	275	+/-76	43.2%	+/-7.7
Female	+/-8.2	362	+/-93	56.8%	+/-7.7
Sex ratio (males per 100 females)	(X)	76.0	+/-24.2	(X)	(X)
RACE					
Total population	(X)	4,068	+/-378	4,068	(X)
One race	+/-0.3	3,945	+/-378	97.0%	+/-2.3
Two or more races	+/-0.3	123	+/-94	3.0%	+/-2.3
One race	+/-0.3	3,945	+/-378	97.0%	+/-2.3
White	+/-6.4	3,805	+/-369	93.5%	+/-3.4
Black or African American	+/-6.5	0	+/-13	0.0%	+/-1.0
American Indian and Alaska Native	+/-1.0	11	+/-20	0.3%	+/-0.5
Cherokee tribal grouping	+/-1.0	0	+/-13	0.0%	+/-1.0
Chippewa tribal grouping	+/-1.0	0	+/-13	0.0%	+/-1.0
Navajo tribal grouping	+/-1.0	0	+/-13	0.0%	+/-1.0
Sioux tribal grouping	+/-1.0	0	+/-13	0.0%	+/-1.0
Asian	+/-0.5	79	+/-70	1.9%	+/-1.7
Asian Indian	+/-1.0	16	+/-24	0.4%	+/-0.6
Chinese	+/-1.0	0	+/-13	0.0%	+/-1.0
Filipino	+/-1.0	0	+/-13	0.0%	+/-1.0
Japanese	+/-1.0	0	+/-13	0.0%	+/-1.0
Korean	+/-1.0	48	+/-68	1.2%	+/-1.6

Subject	Census Tract 308, Hardin County, Texas Percent Margin of Error	Census Tract 309, Hardin County, Texas			
		Estimate	Margin of Error	Percent	Percent Margin of Error
Vietnamese	+/-0.5	0	+/-13	0.0%	+/-1.0
Other Asian	+/-1.0	15	+/-23	0.4%	+/-0.6
Native Hawaiian and Other Pacific Islander	+/-1.0	0	+/-13	0.0%	+/-1.0
Native Hawaiian	+/-1.0	0	+/-13	0.0%	+/-1.0
Guamanian or Chamorro	+/-1.0	0	+/-13	0.0%	+/-1.0
Samoan	+/-1.0	0	+/-13	0.0%	+/-1.0
Other Pacific Islander	+/-1.0	0	+/-13	0.0%	+/-1.0
Some other race	+/-1.0	50	+/-80	1.2%	+/-2.0
Two or more races	+/-0.3	123	+/-94	3.0%	+/-2.3
White and Black or African American	+/-1.0	0	+/-13	0.0%	+/-1.0
White and American Indian and Alaska Native	+/-0.3	45	+/-44	1.1%	+/-1.1
White and Asian	+/-1.0	78	+/-88	1.9%	+/-2.1
Black or African American and American Indian and Alaska Native	+/-1.0	0	+/-13	0.0%	+/-1.0
Race alone or in combination with one or more other races					
Total population	(X)	4,068	+/-378	4,068	(X)
White	+/-6.5	3,928	+/-369	96.6%	+/-2.6
Black or African American	+/-6.5	0	+/-13	0.0%	+/-1.0
American Indian and Alaska Native	+/-0.3	56	+/-47	1.4%	+/-1.2
Asian	+/-0.5	157	+/-106	3.9%	+/-2.6
Native Hawaiian and Other Pacific Islander	+/-1.0	0	+/-13	0.0%	+/-1.0
Some other race	+/-1.0	50	+/-80	1.2%	+/-2.0
HISPANIC OR LATINO AND RACE					
Total population	(X)	4,068	+/-378	4,068	(X)
Hispanic or Latino (of any race)	+/-3.1	32	+/-54	0.8%	+/-1.3
Mexican	+/-2.9	0	+/-13	0.0%	+/-1.0
Puerto Rican	+/-1.0	0	+/-13	0.0%	+/-1.0
Cuban	+/-1.0	0	+/-13	0.0%	+/-1.0
Other Hispanic or Latino	+/-0.8	32	+/-54	0.8%	+/-1.3
Not Hispanic or Latino	+/-3.1	4,036	+/-375	99.2%	+/-1.3
White alone	+/-7.0	3,805	+/-369	93.5%	+/-3.4
Black or African American alone	+/-6.5	0	+/-13	0.0%	+/-1.0
American Indian and Alaska Native alone	+/-1.0	11	+/-20	0.3%	+/-0.5
Asian alone	+/-0.5	79	+/-70	1.9%	+/-1.7
Native Hawaiian and Other Pacific Islander alone	+/-1.0	0	+/-13	0.0%	+/-1.0
Some other race alone	+/-1.0	50	+/-80	1.2%	+/-2.0
Two or more races	+/-0.3	91	+/-85	2.2%	+/-2.1
Two races including Some other race	+/-1.0	0	+/-13	0.0%	+/-1.0
Two races excluding Some other race, and Three or more races	+/-0.3	91	+/-85	2.2%	+/-2.1
Total housing units	(X)	1,760	+/-104	(X)	(X)
CITIZEN, VOTING AGE POPULATION					
Citizen, 18 and over population	(X)	3,044	+/-282	3,044	(X)
Male	+/-4.4	1,526	+/-206	50.1%	+/-4.1
Female	+/-4.4	1,518	+/-173	49.9%	+/-4.1

Subject	Census Tract 310, Hardin County, Texas			
	Estimate	Margin of Error	Percent	Percent Margin of Error
SEX AND AGE				
Total population	3,794	+/-478	3,794	(X)
Male	1,854	+/-280	48.9%	+/-3.9
Female	1,940	+/-283	51.1%	+/-3.9
Sex ratio (males per 100 females)	95.6	+/-14.8	(X)	(X)
Under 5 years	87	+/-59	2.3%	+/-1.6
5 to 9 years	162	+/-90	4.3%	+/-2.2
10 to 14 years	336	+/-145	8.9%	+/-3.2
15 to 19 years	296	+/-121	7.8%	+/-3.0
20 to 24 years	174	+/-101	4.6%	+/-2.5
25 to 34 years	603	+/-227	15.9%	+/-5.4
35 to 44 years	514	+/-154	13.5%	+/-3.3
45 to 54 years	499	+/-162	13.2%	+/-4.1
55 to 59 years	381	+/-120	10.0%	+/-3.3
60 to 64 years	193	+/-87	5.1%	+/-2.2
65 to 74 years	380	+/-136	10.0%	+/-3.9
75 to 84 years	162	+/-79	4.3%	+/-2.1
85 years and over	7	+/-12	0.2%	+/-0.3
Median age (years)	40.7	+/-4.0	(X)	(X)
Under 18 years	792	+/-219	20.9%	+/-4.2
16 years and over	3,151	+/-357	83.1%	+/-4.3
18 years and over	3,002	+/-344	79.1%	+/-4.2
21 years and over	2,868	+/-337	75.6%	+/-4.7
62 years and over	691	+/-163	18.2%	+/-4.8
65 years and over	549	+/-156	14.5%	+/-4.6
18 years and over	3,002	+/-344	3,002	(X)
Male	1,549	+/-246	51.6%	+/-4.1
Female	1,453	+/-175	48.4%	+/-4.1
Sex ratio (males per 100 females)	106.6	+/-17.6	(X)	(X)
65 years and over	549	+/-156	549	(X)
Male	279	+/-97	50.8%	+/-9.6
Female	270	+/-92	49.2%	+/-9.6
Sex ratio (males per 100 females)	103.3	+/-39.3	(X)	(X)
RACE				
Total population	3,794	+/-478	3,794	(X)
One race	3,750	+/-481	98.8%	+/-1.8
Two or more races	44	+/-70	1.2%	+/-1.8
One race	3,750	+/-481	98.8%	+/-1.8
White	3,674	+/-481	96.8%	+/-2.7
Black or African American	20	+/-31	0.5%	+/-0.8
American Indian and Alaska Native	0	+/-13	0.0%	+/-1.0
Cherokee tribal grouping	0	+/-13	0.0%	+/-1.0
Chippewa tribal grouping	0	+/-13	0.0%	+/-1.0
Navajo tribal grouping	0	+/-13	0.0%	+/-1.0
Sioux tribal grouping	0	+/-13	0.0%	+/-1.0
Asian	56	+/-83	1.5%	+/-2.2
Asian Indian	56	+/-83	1.5%	+/-2.2
Chinese	0	+/-13	0.0%	+/-1.0
Filipino	0	+/-13	0.0%	+/-1.0
Japanese	0	+/-13	0.0%	+/-1.0
Korean	0	+/-13	0.0%	+/-1.0
Vietnamese	0	+/-13	0.0%	+/-1.0

Subject	Census Tract 310, Hardin County, Texas			
	Estimate	Margin of Error	Percent	Percent Margin of Error
Other Asian	0	+/-13	0.0%	+/-1.0
Native Hawaiian and Other Pacific Islander	0	+/-13	0.0%	+/-1.0
Native Hawaiian	0	+/-13	0.0%	+/-1.0
Guamanian or Chamorro	0	+/-13	0.0%	+/-1.0
Samoa	0	+/-13	0.0%	+/-1.0
Other Pacific Islander	0	+/-13	0.0%	+/-1.0
Some other race	0	+/-13	0.0%	+/-1.0
Two or more races	44	+/-70	1.2%	+/-1.8
White and Black or African American	0	+/-13	0.0%	+/-1.0
White and American Indian and Alaska Native	0	+/-13	0.0%	+/-1.0
White and Asian	18	+/-28	0.5%	+/-0.7
Black or African American and American Indian and Alaska Native	0	+/-13	0.0%	+/-1.0
Race alone or in combination with one or more other races				
Total population	3,794	+/-478	3,794	(X)
White	3,718	+/-480	98.0%	+/-2.4
Black or African American	20	+/-31	0.5%	+/-0.8
American Indian and Alaska Native	0	+/-13	0.0%	+/-1.0
Asian	100	+/-98	2.6%	+/-2.6
Native Hawaiian and Other Pacific Islander	0	+/-13	0.0%	+/-1.0
Some other race	26	+/-43	0.7%	+/-1.2
HISPANIC OR LATINO AND RACE				
Total population	3,794	+/-478	3,794	(X)
Hispanic or Latino (of any race)	187	+/-119	4.9%	+/-3.1
Mexican	162	+/-118	4.3%	+/-3.0
Puerto Rican	0	+/-13	0.0%	+/-1.0
Cuban	0	+/-13	0.0%	+/-1.0
Other Hispanic or Latino	25	+/-38	0.7%	+/-1.0
Not Hispanic or Latino	3,607	+/-479	95.1%	+/-3.1
White alone	3,513	+/-479	92.6%	+/-3.9
Black or African American alone	20	+/-31	0.5%	+/-0.8
American Indian and Alaska Native alone	0	+/-13	0.0%	+/-1.0
Asian alone	56	+/-83	1.5%	+/-2.2
Native Hawaiian and Other Pacific Islander alone	0	+/-13	0.0%	+/-1.0
Some other race alone	0	+/-13	0.0%	+/-1.0
Two or more races	18	+/-28	0.5%	+/-0.7
Two races including Some other race	0	+/-13	0.0%	+/-1.0
Two races excluding Some other race, and Three or more races	18	+/-28	0.5%	+/-0.7
Total housing units	1,744	+/-102	(X)	(X)
CITIZEN, VOTING AGE POPULATION				
Citizen, 18 and over population	3,002	+/-344	3,002	(X)
Male	1,549	+/-246	51.6%	+/-4.1
Female	1,453	+/-175	48.4%	+/-4.1

Data are based on a sample and are subject to sampling variability. The degree of uncertainty for an estimate arising from sampling variability is represented through the use of a margin of error. The value shown here is the 90 percent margin of error. The margin of error can be interpreted roughly as providing a 90 percent probability that the interval defined by the estimate minus the margin of error and the estimate plus the margin of error (the lower and upper confidence bounds) contains the true value. In addition to sampling variability, the ACS estimates are subject to nonsampling error (for a discussion of nonsampling variability, see Accuracy of the Data). The effect of nonsampling error is not represented in these tables.

For more information on understanding race and Hispanic origin data, please see the Census 2010 Brief entitled, Overview of Race and Hispanic Origin: 2010, issued March 2011. (pdf format)

While the 2013-2017 American Community Survey (ACS) data generally reflect the February 2013 Office of Management and Budget (OMB) definitions of metropolitan and micropolitan statistical areas; in certain instances the names, codes, and boundaries of the principal cities shown in ACS tables may differ from the OMB definitions due to differences in the effective dates of the geographic entities.

Estimates of urban and rural populations, housing units, and characteristics reflect boundaries of urban areas defined based on Census 2010 data. As a result, data for urban and rural areas from the ACS do not necessarily reflect the results of ongoing urbanization.

Source: U.S. Census Bureau, 2013-2017 American Community Survey 5-Year Estimates

Explanation of Symbols:

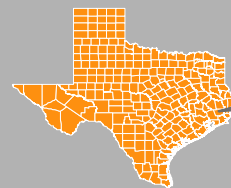
1. An '\*\*\*' entry in the margin of error column indicates that either no sample observations or too few sample observations were available to compute a standard error and thus the margin of error. A statistical test is not appropriate.
2. An '-' entry in the estimate column indicates that either no sample observations or too few sample observations were available to compute an estimate, or a ratio of medians cannot be calculated because one or both of the median estimates falls in the lowest interval or upper interval of an open-ended distribution.
3. An '-' following a median estimate means the median falls in the lowest interval of an open-ended distribution.
4. An '+' following a median estimate means the median falls in the upper interval of an open-ended distribution.
5. An '\*\*\*\*' entry in the margin of error column indicates that the median falls in the lowest interval or upper interval of an open-ended distribution. A statistical test is not appropriate.
6. An '\*\*\*\*\*' entry in the margin of error column indicates that the estimate is controlled. A statistical test for sampling variability is not appropriate.
7. An 'N' entry in the estimate and margin of error columns indicates that data for this geographic area cannot be displayed because the number of sample cases is too small.
8. An '(X)' means that the estimate is not applicable or not available.

# PROJECT BENEFICIARY SERVICE AREA MAP

## SARATOGA DETENTION POND



- RED AREA INDICATES PROJECT BENEFICIARY SERVICE AREA
- BLUE AREA INDICATES HURRICANE HARVEY INUNDATION
- SARATOGA DETENTION POND PROJECT SERVICE AREA CONTAINS 52.4% RESIDENTS THAT MEET THE LOW-MODERATE INCOME (LMI) DEFINITION (LESS THAN 80% AREA MEDIAN INCOME)
- TOTAL POPULATION IN SERVICE AREA = 1525 PERSONS
- LMI POPULATION IN SERVICE AREA = 825 PERSONS / 1525 = 52.4%



Hardin County

481990301003

Map Extent Within Hardin County

### Legend

- Detention Pond
- Service Area
- Hurricane Harvey Inundation
- Waterways
- Census Block Groups
- Communities

### CENSUS BLOCK GROUPS

#	CBG	LOW-MOD POP.	TOTAL POP.	% LMI
33	481990301002	825	1525	52.38%

0 0.5 1 2 Miles

Saratoga

770

481990301002

Little Pine Island Bayou

**DATA SOURCES:**

- Harvey CDBG-DR Infrastructure Application Guidebook, pg. 33
- 2015 American Community Survey (ACS), TIGER/Line Database, US Census Bureau
- HUD Notice CPD-19-02
- Subject: Low- and Moderate-Income Summary Data Updates





DP05

## ACS DEMOGRAPHIC AND HOUSING ESTIMATES

2013-2017 American Community Survey 5-Year Estimates

Supporting documentation on code lists, subject definitions, data accuracy, and statistical testing can be found on the American Community Survey website in the Technical Documentation section.

Sample size and data quality measures (including coverage rates, allocation rates, and response rates) can be found on the American Community Survey website in the Methodology section.

Although the American Community Survey (ACS) produces population, demographic and housing unit estimates, it is the Census Bureau's Population Estimates Program that produces and disseminates the official estimates of the population for the nation, states, counties, cities, and towns and estimates of housing units for states and counties.

Subject	Census Tract 301, Hardin County, Texas			
	Estimate	Margin of Error	Percent	Percent Margin of Error
<b>SEX AND AGE</b>				
Total population	3,426	+/-658	3,426	(X)
Male	1,494	+/-329	43.6%	+/-4.5
Female	1,932	+/-396	56.4%	+/-4.5
Sex ratio (males per 100 females)	77.3	+/-14.3	(X)	(X)
Under 5 years	73	+/-67	2.1%	+/-1.9
5 to 9 years	226	+/-150	6.6%	+/-4.0
10 to 14 years	279	+/-134	8.1%	+/-3.6
15 to 19 years	347	+/-184	10.1%	+/-4.7
20 to 24 years	131	+/-89	3.8%	+/-2.5
25 to 34 years	496	+/-267	14.5%	+/-6.9
35 to 44 years	481	+/-189	14.0%	+/-5.2
45 to 54 years	476	+/-209	13.9%	+/-5.3
55 to 59 years	157	+/-67	4.6%	+/-2.0
60 to 64 years	239	+/-104	7.0%	+/-3.1
65 to 74 years	377	+/-174	11.0%	+/-5.2
75 to 84 years	138	+/-92	4.0%	+/-2.6
85 years and over	6	+/-11	0.2%	+/-0.3
Median age (years)	40.1	+/-5.6	(X)	(X)
Under 18 years	857	+/-253	25.0%	+/-3.7
16 years and over	2,735	+/-485	79.8%	+/-4.0
18 years and over	2,569	+/-443	75.0%	+/-3.7
21 years and over	2,480	+/-433	72.4%	+/-4.1
62 years and over	675	+/-222	19.7%	+/-6.3
65 years and over	521	+/-181	15.2%	+/-5.2
18 years and over	2,569	+/-443	2,569	(X)
Male	1,077	+/-205	41.9%	+/-4.9
Female	1,492	+/-305	58.1%	+/-4.9
Sex ratio (males per 100 females)	72.2	+/-14.8	(X)	(X)



Subject	Census Tract 301, Hardin County, Texas			
	Estimate	Margin of Error	Percent	Percent Margin of Error
65 years and over	521	+/-181	521	(X)
Male	241	+/-104	46.3%	+/-16.9
Female	280	+/-148	53.7%	+/-16.9
Sex ratio (males per 100 females)	86.1	+/-65.2	(X)	(X)
RACE				
Total population	3,426	+/-658	3,426	(X)
One race	3,408	+/-655	99.5%	+/-0.7
Two or more races	18	+/-23	0.5%	+/-0.7
One race	3,408	+/-655	99.5%	+/-0.7
White	3,402	+/-656	99.3%	+/-0.8
Black or African American	6	+/-11	0.2%	+/-0.3
American Indian and Alaska Native	0	+/-13	0.0%	+/-1.2
Cherokee tribal grouping	0	+/-13	0.0%	+/-1.2
Chippewa tribal grouping	0	+/-13	0.0%	+/-1.2
Navajo tribal grouping	0	+/-13	0.0%	+/-1.2
Sioux tribal grouping	0	+/-13	0.0%	+/-1.2
Asian	0	+/-13	0.0%	+/-1.2
Asian Indian	0	+/-13	0.0%	+/-1.2
Chinese	0	+/-13	0.0%	+/-1.2
Filipino	0	+/-13	0.0%	+/-1.2
Japanese	0	+/-13	0.0%	+/-1.2
Korean	0	+/-13	0.0%	+/-1.2
Vietnamese	0	+/-13	0.0%	+/-1.2
Other Asian	0	+/-13	0.0%	+/-1.2
Native Hawaiian and Other Pacific Islander	0	+/-13	0.0%	+/-1.2
Native Hawaiian	0	+/-13	0.0%	+/-1.2
Guamanian or Chamorro	0	+/-13	0.0%	+/-1.2
Samoa	0	+/-13	0.0%	+/-1.2
Other Pacific Islander	0	+/-13	0.0%	+/-1.2
Some other race	0	+/-13	0.0%	+/-1.2
Two or more races	18	+/-23	0.5%	+/-0.7
White and Black or African American	0	+/-13	0.0%	+/-1.2
White and American Indian and Alaska Native	18	+/-23	0.5%	+/-0.7
White and Asian	0	+/-13	0.0%	+/-1.2
Black or African American and American Indian and Alaska Native	0	+/-13	0.0%	+/-1.2
Race alone or in combination with one or more other races				
Total population	3,426	+/-658	3,426	(X)
White	3,420	+/-659	99.8%	+/-0.3
Black or African American	6	+/-11	0.2%	+/-0.3
American Indian and Alaska Native	18	+/-23	0.5%	+/-0.7
Asian	0	+/-13	0.0%	+/-1.2
Native Hawaiian and Other Pacific Islander	0	+/-13	0.0%	+/-1.2
Some other race	0	+/-13	0.0%	+/-1.2
HISPANIC OR LATINO AND RACE				
Total population	3,426	+/-658	3,426	(X)
Hispanic or Latino (of any race)	75	+/-109	2.2%	+/-3.1
Mexican	75	+/-109	2.2%	+/-3.1
Puerto Rican	0	+/-13	0.0%	+/-1.2
Cuban	0	+/-13	0.0%	+/-1.2
Other Hispanic or Latino	0	+/-13	0.0%	+/-1.2
Not Hispanic or Latino	3,351	+/-626	97.8%	+/-3.1
White alone	3,327	+/-626	97.1%	+/-3.4
Black or African American alone	6	+/-11	0.2%	+/-0.3
American Indian and Alaska Native alone	0	+/-13	0.0%	+/-1.2

Subject	Census Tract 301, Hardin County, Texas			
	Estimate	Margin of Error	Percent	Percent Margin of Error
Asian alone	0	+/-13	0.0%	+/-1.2
Native Hawaiian and Other Pacific Islander alone	0	+/-13	0.0%	+/-1.2
Some other race alone	0	+/-13	0.0%	+/-1.2
Two or more races	18	+/-23	0.5%	+/-0.7
Two races including Some other race	0	+/-13	0.0%	+/-1.2
Two races excluding Some other race, and Three or more races	18	+/-23	0.5%	+/-0.7
Total housing units	1,538	+/-113	(X)	(X)
CITIZEN, VOTING AGE POPULATION				
Citizen, 18 and over population	2,569	+/-443	2,569	(X)
Male	1,077	+/-205	41.9%	+/-4.9
Female	1,492	+/-305	58.1%	+/-4.9

Data are based on a sample and are subject to sampling variability. The degree of uncertainty for an estimate arising from sampling variability is represented through the use of a margin of error. The value shown here is the 90 percent margin of error. The margin of error can be interpreted roughly as providing a 90 percent probability that the interval defined by the estimate minus the margin of error and the estimate plus the margin of error (the lower and upper confidence bounds) contains the true value. In addition to sampling variability, the ACS estimates are subject to nonsampling error (for a discussion of nonsampling variability, see Accuracy of the Data). The effect of nonsampling error is not represented in these tables.

For more information on understanding race and Hispanic origin data, please see the Census 2010 Brief entitled, Overview of Race and Hispanic Origin: 2010, issued March 2011. (pdf format)

While the 2013-2017 American Community Survey (ACS) data generally reflect the February 2013 Office of Management and Budget (OMB) definitions of metropolitan and micropolitan statistical areas; in certain instances the names, codes, and boundaries of the principal cities shown in ACS tables may differ from the OMB definitions due to differences in the effective dates of the geographic entities.

Estimates of urban and rural populations, housing units, and characteristics reflect boundaries of urban areas defined based on Census 2010 data. As a result, data for urban and rural areas from the ACS do not necessarily reflect the results of ongoing urbanization.

Source: U.S. Census Bureau, 2013-2017 American Community Survey 5-Year Estimates

#### Explanation of Symbols:

1. An '\*\*\*' entry in the margin of error column indicates that either no sample observations or too few sample observations were available to compute a standard error and thus the margin of error. A statistical test is not appropriate.
2. An '-' entry in the estimate column indicates that either no sample observations or too few sample observations were available to compute an estimate, or a ratio of medians cannot be calculated because one or both of the median estimates falls in the lowest interval or upper interval of an open-ended distribution.
3. An '-' following a median estimate means the median falls in the lowest interval of an open-ended distribution.
4. An '+' following a median estimate means the median falls in the upper interval of an open-ended distribution.
5. An '\*\*\*' entry in the margin of error column indicates that the median falls in the lowest interval or upper interval of an open-ended distribution. A statistical test is not appropriate.
6. An '\*\*\*\*\*' entry in the margin of error column indicates that the estimate is controlled. A statistical test for sampling variability is not appropriate.
7. An 'N' entry in the estimate and margin of error columns indicates that data for this geographic area cannot be displayed because the number of sample cases is too small.
8. An '(X)' means that the estimate is not applicable or not available.



# Texas Division of Emergency Management Recovery, Mitigation and Standards

## Texas Hazard Mitigation Grant Program (HMGP) Notice of Intent (NOI) Form

FEMA Disaster #: \_\_\_\_\_ Date: \_\_\_\_\_

Applicant: \_\_\_\_\_

City: \_\_\_\_\_ County: \_\_\_\_\_ State: TX

### NOI Point of Contact (POC)

Name: \_\_\_\_\_ Title: \_\_\_\_\_

Phone: \_\_\_\_\_ Mobile: \_\_\_\_\_ Fax: \_\_\_\_\_

Email: \_\_\_\_\_

### Mailing Address

Street Address: \_\_\_\_\_

City: \_\_\_\_\_ State: Texas Zip: \_\_\_\_\_

### Assessment

Mitigation Action Plan (MAP) approval date: \_\_\_\_\_

If NOT approved – Date submitted to State: \_\_\_\_\_

Is this specific project identified in the MAP? \_\_\_\_\_

If YES, provide the page location of measure in MAP: \_\_\_\_\_

If NO, is this type of project identified in the MAP? \_\_\_\_\_

Is Community in good standing with NFIP? \_\_\_\_\_

### Project Proposal

Estimated Project Cost: \_\_\_\_\_

*(Please provide a researched estimate for the total cost of the project.)*

Funding Method for 25% Match:

Proposed Project Area:

**Damage History Related to Project:**

**Number of Residents or Structures at Risk:**

**Proposed Mitigation Action:**

**Background and Discussion:**

**List any technical studies in progress or completed?**

**Will this project be requested as a Phased project? \_\_\_\_\_ If yes, indicate activities:**

**Hydrologic & Hydraulic Final**

**Engineering**

**Design EO 11988**

**Will this project require any of the following: (check all that apply)**

**Benefit Cost Analysis**

**Environmental Historical & Environmental Preservation Review**

**Other: \_\_\_\_\_**

**Provide the Estimated Period of Performance (POP). If this will be a phased project, identify each POP):**

**POP (or Phase I POP): \_\_\_\_\_ Phase II POP: \_\_\_\_\_**

**Submit the completed application via email to [TDEM-Mitigation@dps.texas.gov](mailto:TDEM-Mitigation@dps.texas.gov).  
Please keep a copy for your files.**



# Texas Division of Emergency Management Recovery, Mitigation and Standards

## Texas Hazard Mitigation Grant Program (HMGP) Notice of Intent (NOI) Form

FEMA Disaster #: \_\_\_\_\_ Date: \_\_\_\_\_

Applicant: \_\_\_\_\_

City: \_\_\_\_\_ County: \_\_\_\_\_ State: TX

### NOI Point of Contact (POC)

Name: \_\_\_\_\_ Title \_\_\_\_\_

Phone: \_\_\_\_\_ Mobile: \_\_\_\_\_ Fax: \_\_\_\_\_

Email: \_\_\_\_\_

### Mailing Address

Street Address: \_\_\_\_\_

City: \_\_\_\_\_ State: Texas Zip: \_\_\_\_\_

### Assessment

Mitigation Action Plan (MAP) approval date: \_\_\_\_\_

If NOT approved – Date submitted to State: \_\_\_\_\_

Is this specific project identified in the MAP? \_\_\_\_\_

If YES, provide the page location of measure in MAP: \_\_\_\_\_

If NO, is this type of project identified in the MAP? \_\_\_\_\_

Is Community in good standing with NFIP? \_\_\_\_\_

### Project Proposal

Estimated Project Cost: \_\_\_\_\_

*(Please provide a researched estimate for the total cost of the project.)*

Funding Method for 25% Match:

Proposed Project Area:



**Damage History Related to Project:**

**Number of Residents or Structures at Risk:**

**Proposed Mitigation Action:**

**Background and Discussion:**

**List any technical studies in progress or completed?**

**Will this project be requested as a Phased project? \_\_\_\_\_ If yes, indicate activities:**

**Hydrologic & Hydraulic Final**

**Engineering**

**Design EO 11988**

**Will this project require any of the following: (check all that apply)**

**Benefit Cost Analysis**

**Environmental Historical & Environmental Preservation Review**

**Other: \_\_\_\_\_**

**Provide the Estimated Period of Performance (POP). If this will be a phased project, identify each POP):**

**POP (or Phase I POP): \_\_\_\_\_ Phase II POP: \_\_\_\_\_**

**Submit the completed application via email to [TDEM-Mitigation@dps.texas.gov](mailto:TDEM-Mitigation@dps.texas.gov).  
Please keep a copy for your files.**



# Texas Division of Emergency Management Recovery, Mitigation and Standards

## Texas Hazard Mitigation Grant Program (HMGP) Notice of Intent (NOI) Form

FEMA Disaster #: \_\_\_\_\_ Date: \_\_\_\_\_

Applicant: \_\_\_\_\_

City: \_\_\_\_\_ County: \_\_\_\_\_ State: TX

### NOI Point of Contact (POC)

Name: \_\_\_\_\_ Title \_\_\_\_\_

Phone: \_\_\_\_\_ Mobile: \_\_\_\_\_ Fax: \_\_\_\_\_

Email: \_\_\_\_\_

### Mailing Address

Street Address: \_\_\_\_\_

City: \_\_\_\_\_ State: Texas Zip: \_\_\_\_\_

### Assessment

Mitigation Action Plan (MAP) approval date: \_\_\_\_\_

If NOT approved – Date submitted to State: \_\_\_\_\_

Is this specific project identified in the MAP? \_\_\_\_\_

If YES, provide the page location of measure in MAP: \_\_\_\_\_

If NO, is this type of project identified in the MAP? \_\_\_\_\_

Is Community in good standing with NFIP? \_\_\_\_\_

### Project Proposal

Estimated Project Cost: \_\_\_\_\_

*(Please provide a researched estimate for the total cost of the project.)*

Funding Method for 25% Match:

Proposed Project Area:

**Damage History Related to Project:**

**Number of Residents or Structures at Risk:**

**Proposed Mitigation Action:**

**Background and Discussion:**

**List any technical studies in progress or completed?**

**Will this project be requested as a Phased project? \_\_\_\_\_ If yes, indicate activities:**

**Hydrologic & Hydraulic Final**

**Engineering**

**Design EO 11988**

**Will this project require any of the following: (check all that apply)**

**Benefit Cost Analysis**

**Environmental Historical & Environmental Preservation Review**

**Other: \_\_\_\_\_**

**Provide the Estimated Period of Performance (POP). If this will be a phased project, identify each POP):**

**POP (or Phase I POP): \_\_\_\_\_ Phase II POP: \_\_\_\_\_**

**Submit the completed application via email to [TDEM-Mitigation@dps.texas.gov](mailto:TDEM-Mitigation@dps.texas.gov).  
Please keep a copy for your files.**